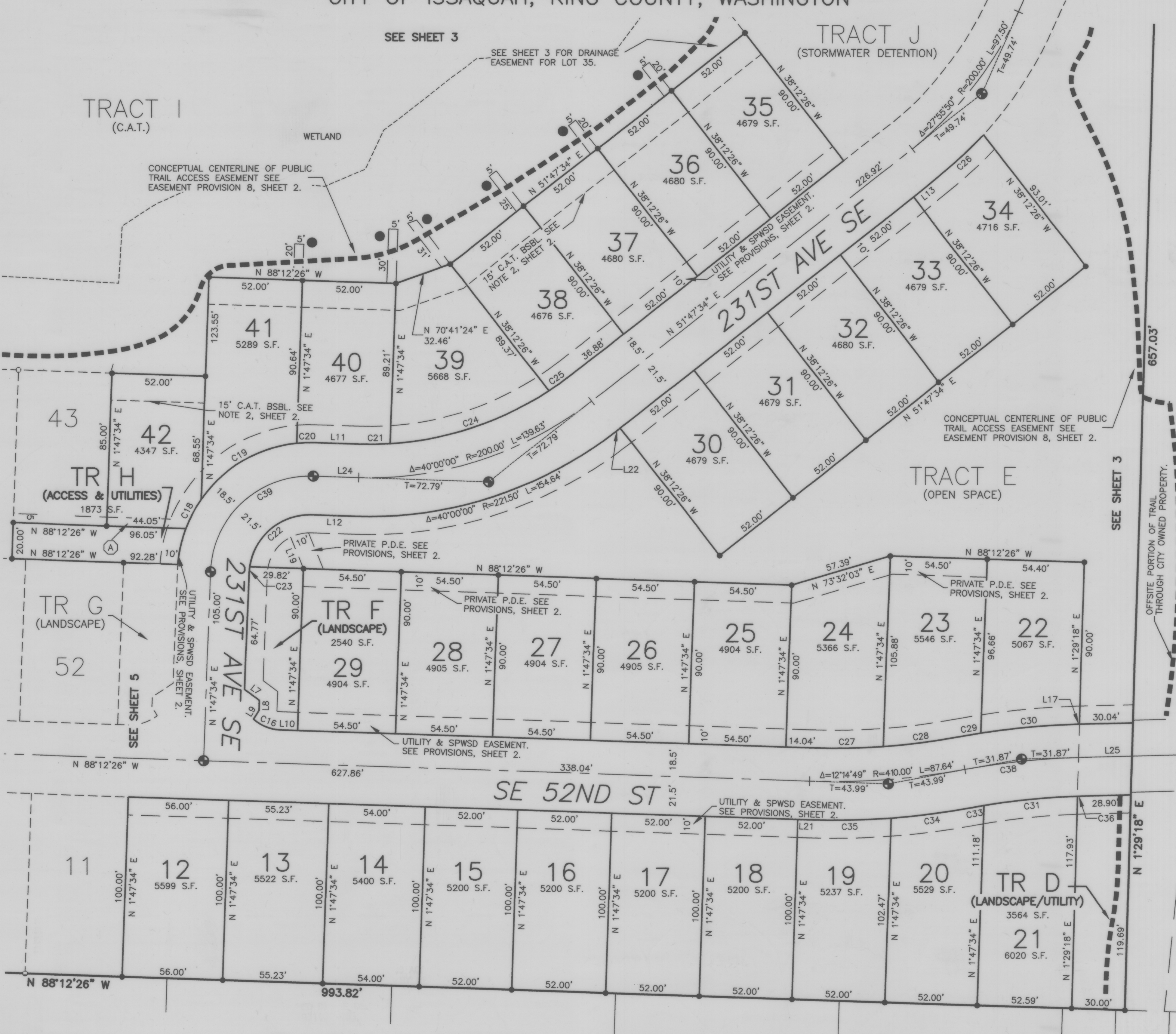


RIVENWOOD

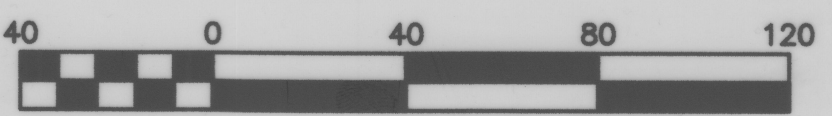
(A.K.A. ISSAQUAH 22)

NW 1/4, NW 1/4, SEC. 22, TWP. 24N., RGE. 6E., W.M.
CITY OF ISSAQUAH, KING COUNTY, WASHINGTON



TAG #	LENGTH	DIRECTION/DELTA	RADIUS
C16	16.43	40°03'20"	23.50
C18	18.32	14°16'55"	73.50
C19	63.49	49°29'39"	73.50
C20	9.72	7°34'39"	73.50
C21	16.97	5°21'29"	181.50
C22	49.12	84°00'11"	33.50
C23	3.51	5°59'49"	33.50
C24	94.60	29°51'47"	181.50
C25	15.14	4°46'45"	181.50
C26	36.55	9°27'16"	221.50
C27	40.53	5°55'53"	391.50
C28	43.15	6°18'56"	391.50
C29	12.15	1°37'29"	428.50
C30	54.34	7°15'56"	428.50
C31	52.44	7°44'02"	388.50
C33	6.70	0°59'15"	388.50

TAG #	LENGTH	DIRECTION/DELTA	RADIUS
C34	46.06	6°06'56"	431.50
C35	46.18	6°07'53"	431.50
C36	1.15	0°10'09"	388.50
C38	63.62	8°53'25"	410.00
L7	10.08	N 53°08'37" W	
L8	5.57	N 01°47'34" E	
L9	5.64	N 32°21'41" E	
L10	9.50	N 88°12'26" W	
L11	25.36	N 88°12'26" W	
L12	25.36	N 88°12'26" W	
L13	15.62	N 51°47'34" E	
L17	0.99	N 88°26'10" E	
L21	5.91	N 88°12'26" W	
L22	3.30	N 51°47'34" E	
L25	30.04	N 88°26'10" E	



Scale 1" = 40'

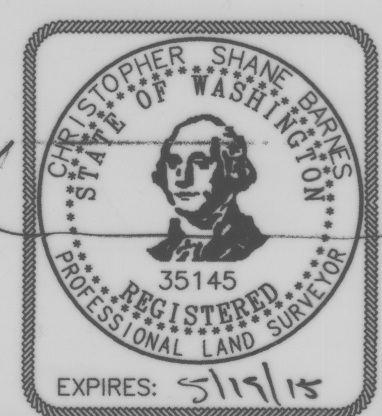
MERIDIAN
WASHINGTON STATE PLANE COORDINATE SYSTEM - NORTH ZONE (NAD 83/91)

EQUIPMENT & PROCEDURES
A 5" ELECTRONIC TOTAL STATION WAS USED FOR THIS FIELD TRAVERSE SURVEY. ACCURACY MEETS OR EXCEEDS W.A.C. 332-130-090.

NOTES
ALL FRONT PROPERTY CORNERS HAVE BEEN REFERENCED BY A LEAD PLUG AND TACK, WITH AN LS WASHER STAMPED 35145 SET AT THE EXTENSION OF THE PROPERTY LINE TO THE TOP OF CURB. SEE TABLE ON SHEET 4 FOR OFFSET DISTANCES FROM PLUG TO FRONT CORNER.

(A) UTILITY AND SPWSD EASEMENT, SEE PROVISIONS ON SHEET 2.

- LEGEND**
- SET 1/2" X 24" REBAR WITH 1-3/4" PLASTIC CAP STAMPED "MEAD GILMAN & ASSOCIATES 32434/35145" (EXCEPT AS OTHERWISE NOTED).
 - ⊙ SET 4" X 4" CONCRETE MONUMENT WITH 1-1/2" DIAMETER BRASS DISC STAMPED "35145" WITH "X" IN A CASE.
 - LOTS 35-41 BENEFITTED BY PRIVATE DRAINAGE EASEMENTS OVER TRACT I. SEE PROVISIONS SHEET 2.
 - SPWSD SAMMAMISH PLATEAU WATER AND SEWER DISTRICT
 - P.D.E. PRIVATE DRAINAGE EASEMENT
 - S.A.T. CRITICAL AREA TRACT
 - BSBL BUILDING SETBACK LINE



JOB NO. 12093
SHEET 6 OF 6



Mead-Gilman & Assoc.
Professional Land Surveyors

P.O. BOX 289, WOODINVILLE, WA 98072
PHONE: (425) 486-1252 FAX: (425) 486-6108