

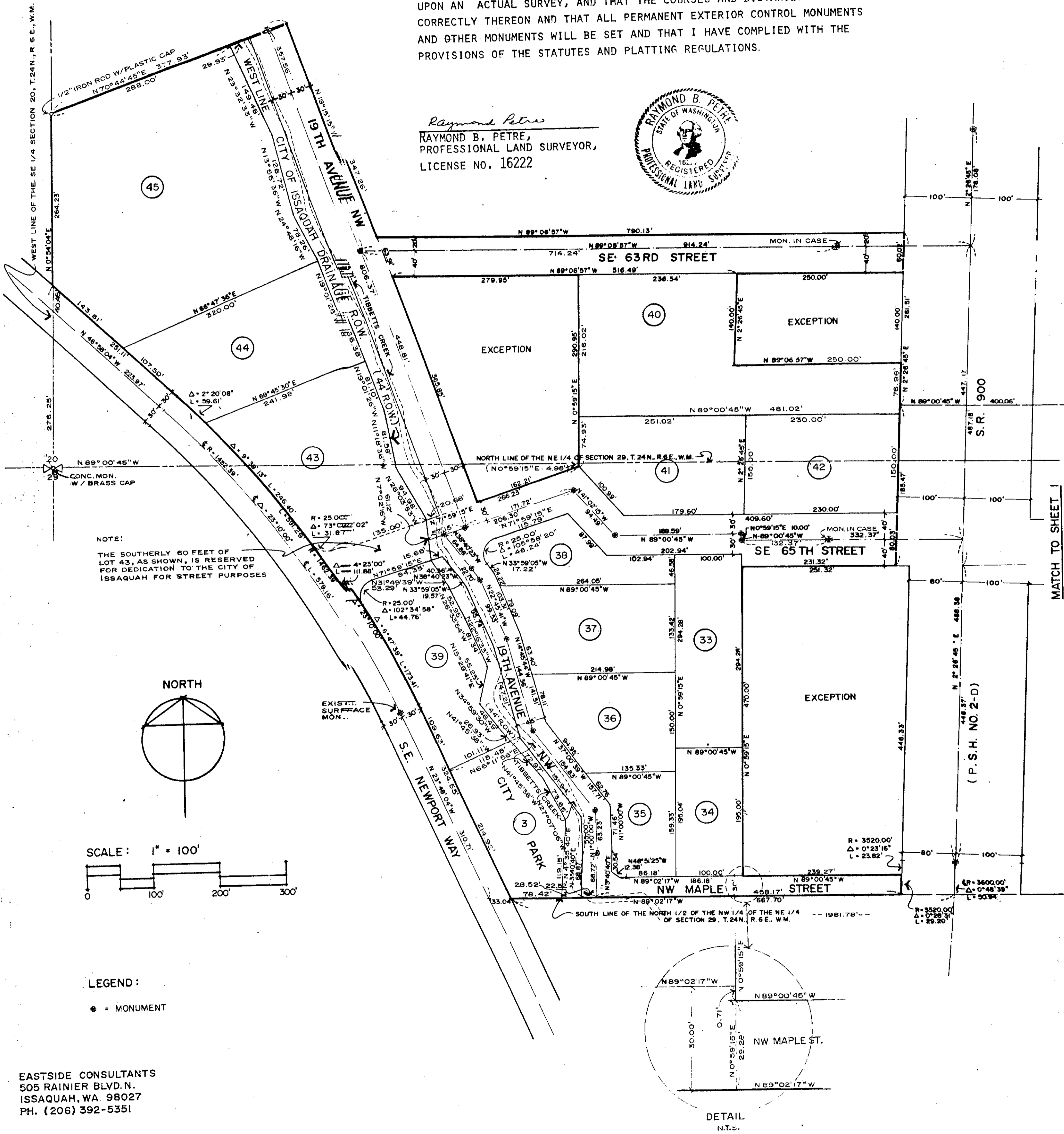
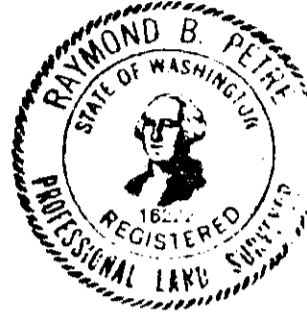
ROWLEY INDUSTRIAL PARK

SEC. 20 AND 29, T.24 N., R.6 E., W.M. CITY OF ISSAQUAH, KING COUNTY, WASHINGTON

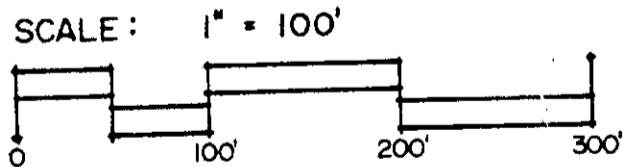
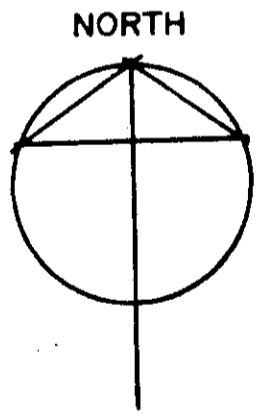
LAND SURVEYOR'S CERTIFICATE

I HEREBY CERTIFY THAT THIS PLAT OF ROWLEY INDUSTRIAL PARK IS BASED UPON AN ACTUAL SURVEY, AND THAT THE COURSES AND DISTANCES ARE SHOWN CORRECTLY THEREON AND THAT ALL PERMANENT EXTERIOR CONTROL MONUMENTS AND OTHER MONUMENTS WILL BE SET AND THAT I HAVE COMPLIED WITH THE PROVISIONS OF THE STATUTES AND PLATTING REGULATIONS.

Raymond Petre
RAYMOND B. PETRE,
PROFESSIONAL LAND SURVEYOR,
LICENSE NO. 16222

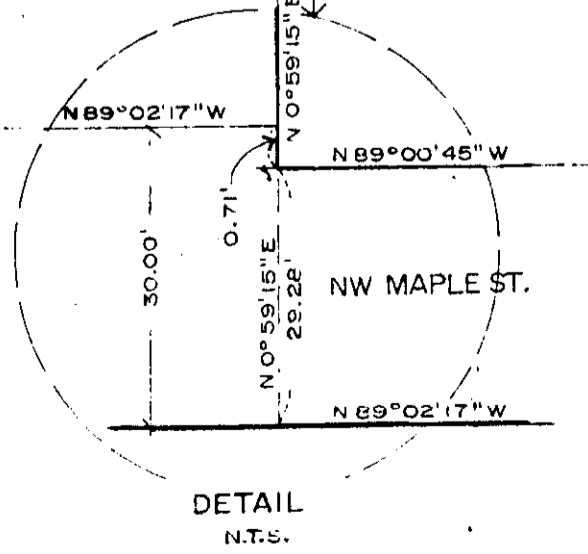


NOTE:
THE SOUTHERLY 60 FEET OF LOT 43, AS SHOWN, IS RESERVED FOR DEDICATION TO THE CITY OF ISSAQUAH FOR STREET PURPOSES



LEGEND:
* = MONUMENT

EASTSIDE CONSULTANTS
505 RAINIER BLVD. N.
ISSAQUAH, WA 98027
PH. (206) 392-5351



MATCH TO SHEET 1