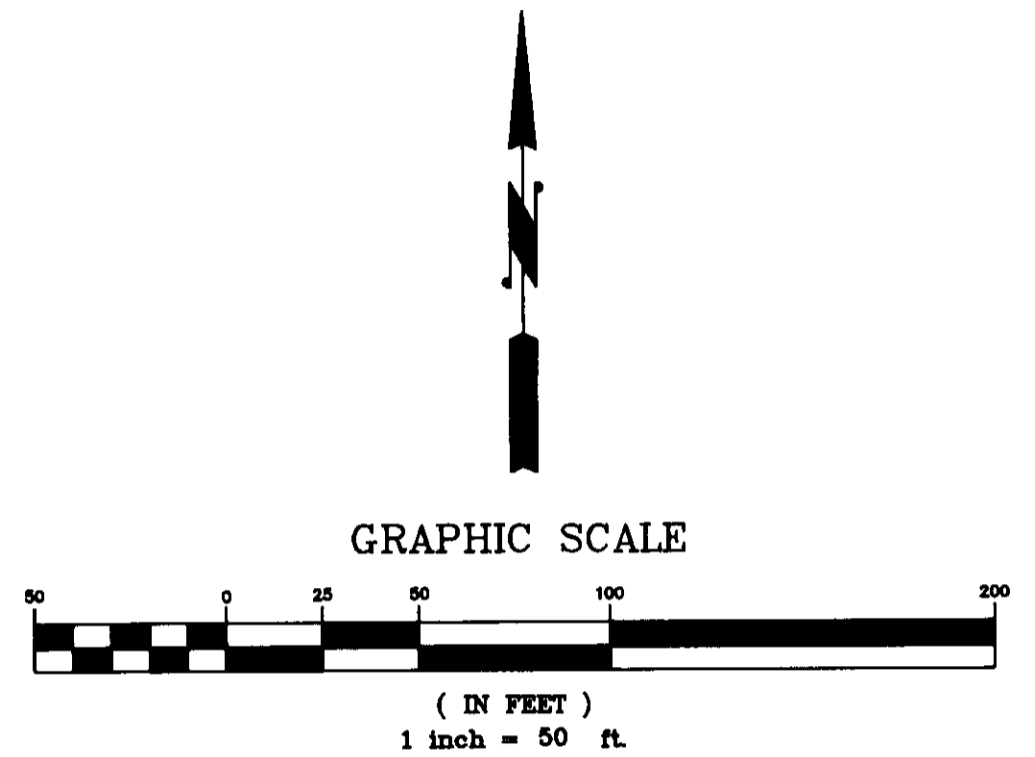
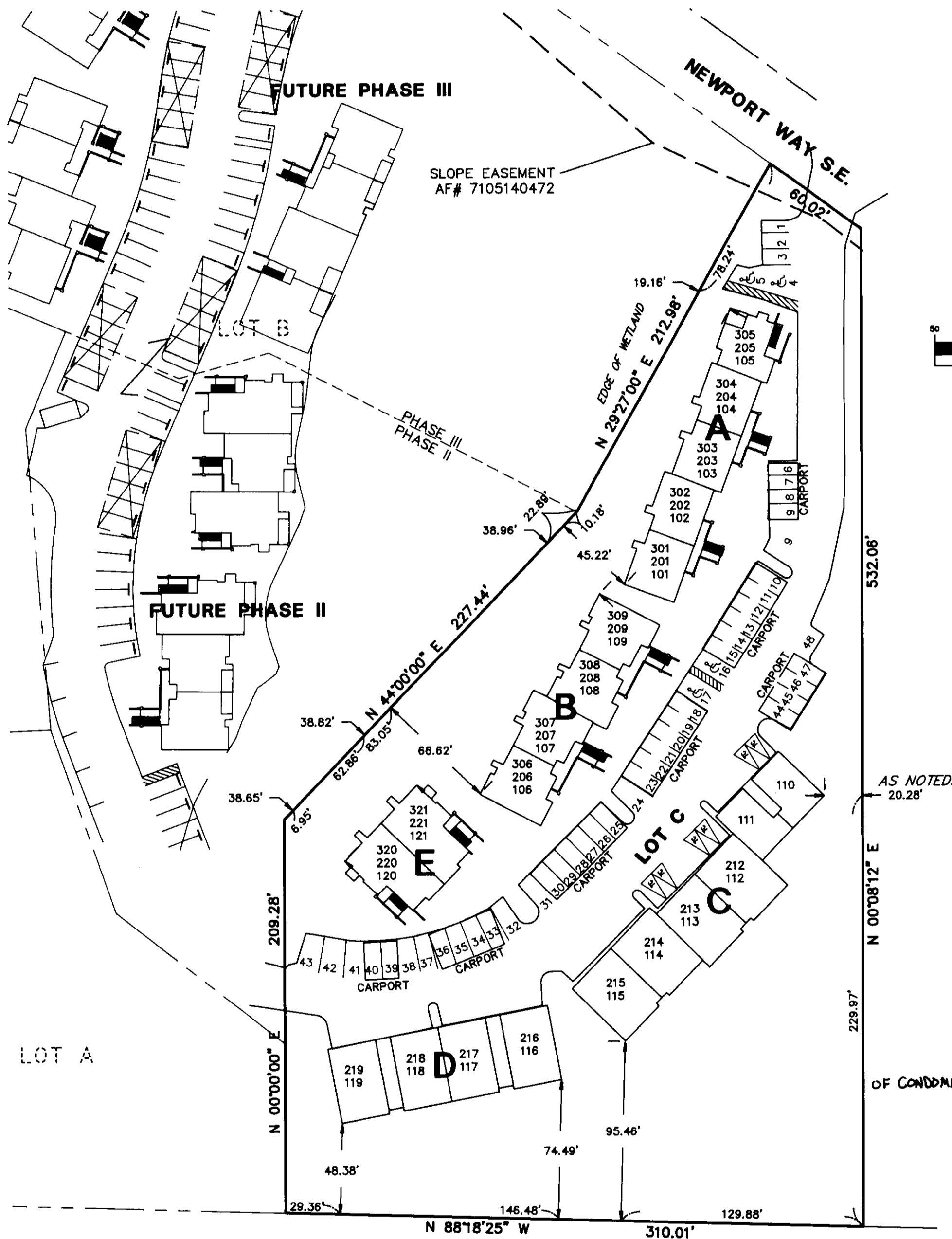


SAMMAMISH HILLS

A CONDOMINIUM - PHASE I

SE 1/4 SW 1/4 SECTION 18, TOWNSHIP 24 NORTH, RANGE 6 EAST, W.M.
KING COUNTY, WASHINGTON

SITE PLAN



NOTE:
THIS SHEET 3 OF 10 SUPERCEDES THE PREVIOUSLY RECORDED SHEET 3 OF 10 RECORDED UNDER KING COUNTY RECORDING NUMBER 9702201140 IN Vol 137 OF CONDOMINIUMS, ~~Page 75~~. THIS IS TO REFLECT PARKING DESIGNATIONS.

DEPARTMENT OF ASSESSMENTS
EXAMINED AND APPROVED THIS 19 DAY OF MARCH, 1997.
Scott Nasse ASSESSOR
A. Martin DEPUTY ASSESSOR

1. BUILDING TIES ARE MEASURED TO OUTSIDE FOUNDATION CORNER AND MEASURED AT RIGHT ANGLES TO PROPERTY LINES EXCEPT
2. FOUNDATION DIMENSIONS ARE MEASURED ON OUTSIDE FACE OF FOUNDATION.
3. ALL LAND DESCRIBED HEREIN SUBJECT TO DEVELOPMENT RIGHTS SET FORTH IN THE DECLARATION.
4. PARTY WALLS ARE 0.8 FOOT THICK, EXTERIOR WALLS ARE 0.4 FOOT THICK
5. DIMENSIONS ON UNIT FLOOR PLANS ARE TO INTERIOR SURFACE OF PERIMETER WALL OF UNIT.
6. REFERENCE FLOOR ELEVATION IS OF FINISH FLOOR. ALL CEILING HEIGHTS IN FLOOR PLANS ARE MEASURED FROM REFERENCE FLOOR ELEVATIONS.

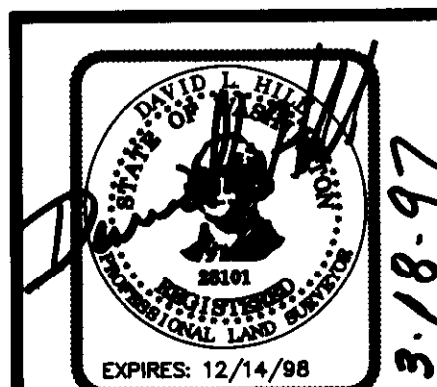
7. ALL PATIOS, DECKS, FIREPLACE FLUES, CHIMNEYS AND OTHER APPARATUS ASSOCIATED WITH FIREPLACES AND WHICH ARE NOT WITHIN A UNIT BOUNDARY AND EXTERIOR WALKWAYS ARE LIMITED COMMON ELEMENTS. PLANS ARE MEASURED FROM REFERENCE FLOOR ELEVATIONS.

8. DIMENSIONS ON UNIT FLOOR PLANS HAVE BEEN AVERAGED AND ARE PLUS OR MINUS APPROXIMATELY 0.2 OF A FOOT.

10. THE ARCHITECTURAL AND CIVIL PLANS WERE APPROVED FOR CONSTRUCTION BY KING COUNTY AND IT IS ASSUMED THAT THE IMPROVEMENTS BUILT ON THE SITE CONFORM TO ALL APPLICABLE ZONING, SENSITIVE AREA AND BUILDING CODES.

9. THE UNIT BOUNDARIES AND SQUARE FOOTAGES ARE DETERMINED BY ACTUAL CONSTRUCTION AND SUPERCEDES ALL OTHER DATA SHOWN HEREON OR RECORDED.

9703200398 Dedication # 9703200398
Filed for Record this 20th of March, 1997
at 1:01 pm in Book 138 of Condo's Page 37
Request of Concept Engineering



CONCEPT ENGINEERING, INC.
455 Rainier Boulevard North, Suite 200
Issaquah, Washington 98027
206) 392-8055