

SAMMAMISH POINTE PHASE 1, A CONDOMINIUM

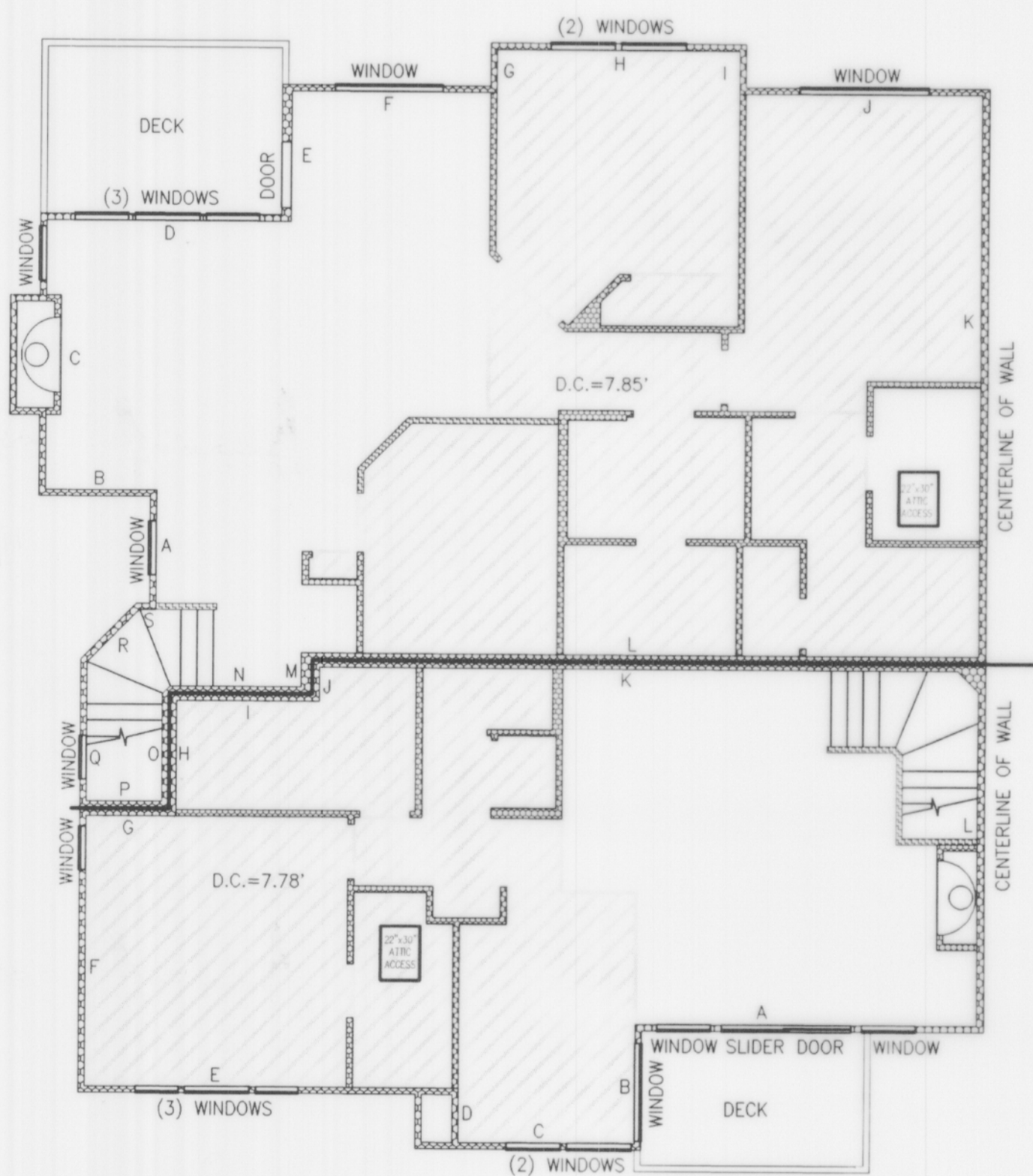
VOLUME/PAGE
136 86

A PORTION OF THE SOUTHWEST QUARTER OF SECTION 20,
TOWNSHIP 24 NORTH, RANGE 6 EAST, WILLAMETTE MERIDIAN
CITY OF ISSAQUAH, KING COUNTY, WASHINGTON

TYPE
UNIT D2
1" = 8'

SECOND FLOOR PLAN

BUILDING 10, UNIT 6, MIRROR IMAGE
BUILDING 11, UNIT 6, MIRROR IMAGE
BUILDING 12, UNIT 3



TYPE
UNIT B
1" = 8'

SECOND FLOOR PLAN

BUILDING 10, UNIT 5, MIRROR IMAGE
BUILDING 11, UNIT 5, MIRROR IMAGE
BUILDING 12, UNIT 4

UNIT 1	UNIT 2	UNIT 3	UNIT 4
FOR BLDG.12, UNIT 1 FOR BLDG 11, UNIT 8	FOR BLDG.11, UNIT 1 FOR BLDG 12, UNIT 8	FOR BLDG.10, UNIT 1 FOR BLDG 13, UNIT 1 (PHASE 2)	FOR BLDG.10, UNIT 8 FOR BLDG 13, UNIT 8 (PHASE 2)

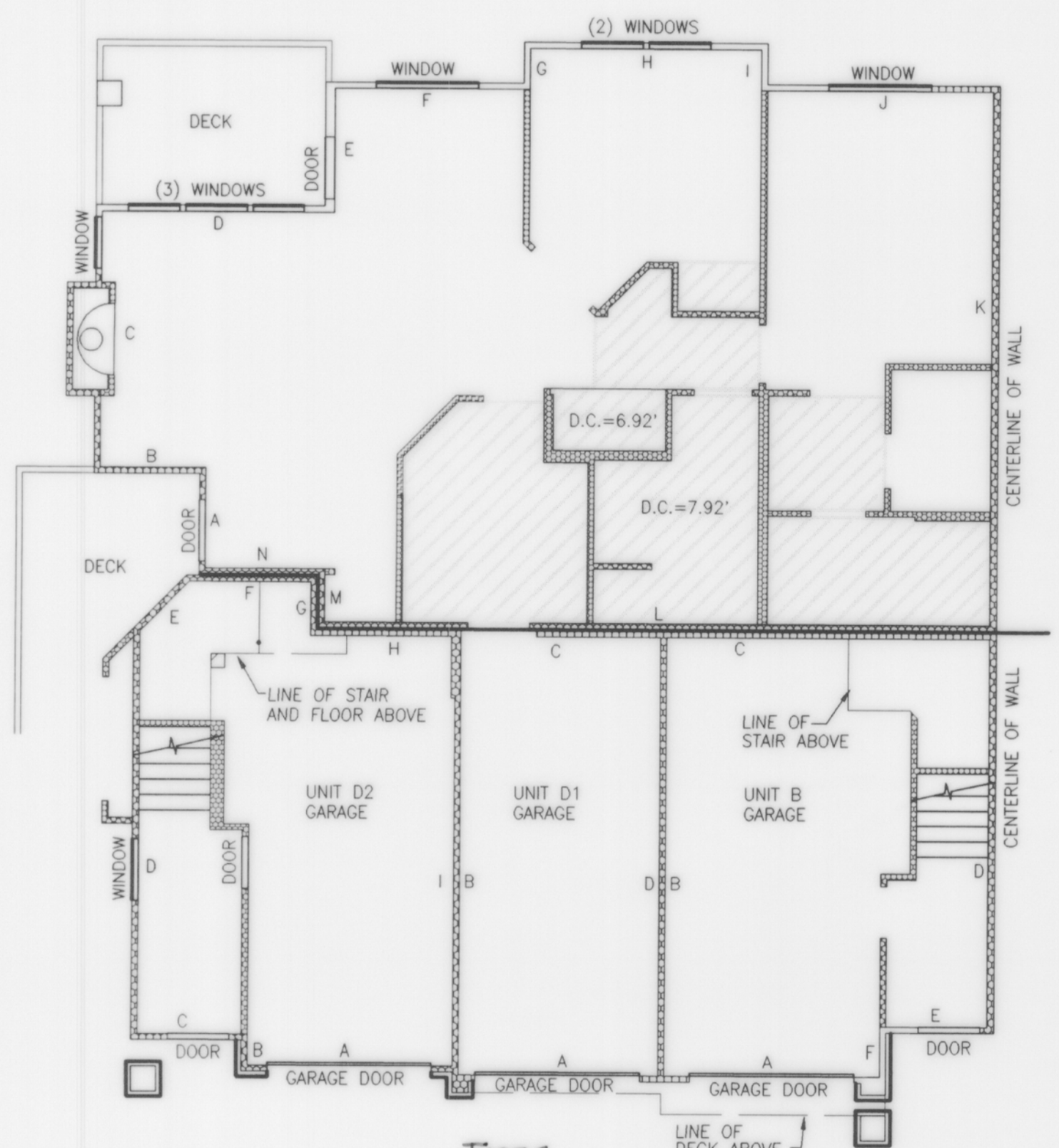
GARAGE UNIT (G-1 AND G-2) FLOOR PLAN
1" = 8'

FINISHED FLOOR ELEVATION=67.03', GARAGE 1
FINISHED FLOOR ELEVATION=65.57', GARAGE 2

TYPE
UNIT D1
1" = 8'

FIRST FLOOR PLAN

BUILDING 10, UNIT 7
BUILDING 11, UNIT 7
BUILDING 12, UNIT 2



TYPE
GARAGE UNITS D2, D1, AND B
1" = 8'

FIRST FLOOR PLAN

TYPE
UNIT B
BUILDING 10, UNIT 5, MIRROR IMAGE
BUILDING 11, UNIT 5, MIRROR IMAGE
BUILDING 12, UNIT 4

TYPE
UNIT D1
BUILDING 10, UNIT 7, MIRROR IMAGE
BUILDING 11, UNIT 7, MIRROR IMAGE
BUILDING 12, UNIT 2

TYPE
UNIT D2
BUILDING 10, UNIT 6, MIRROR IMAGE

NOTES:

1. UNLESS OTHERWISE NOTED OR SHOWN HEREON, DIMENSIONS ARE ON THE INNER FACE OF THE OUTER WALLS OF THE UNIT. INNER WALLS ARE SHOWN FOR LAYOUT PURPOSES ONLY.
2. UNIT LAYOUT IS FROM PLANS BY MILBRANDT ARCHITECTS, SHEETS U-1 THROUGH U-18, WITH REVISION DATE OF 4-26-96.
3. SEE SHEET 9 AND 10 FOR UNIT DIMENSIONS AND CEILING HEIGHTS. DROP CEILING HEIGHTS ARE SHOWN ON UNIT LAYOUT SHEETS 4 THROUGH 8 OF 10.

JOB NO. 5335



Barghausen Consulting Engineers, Inc.
Civil Engineering, Land Planning, Surveying, Environmental Services
18215 72nd Avenue South Kent, WA. 98032
Telephone: (206) 251-6222 Fax: (206) 251-8782

NE 1/4 & SE 1/4 OF SW 1/4, SEC. 20-24N-6E

SHEET 6 OF 10

VOLUME/PAGE
136 86