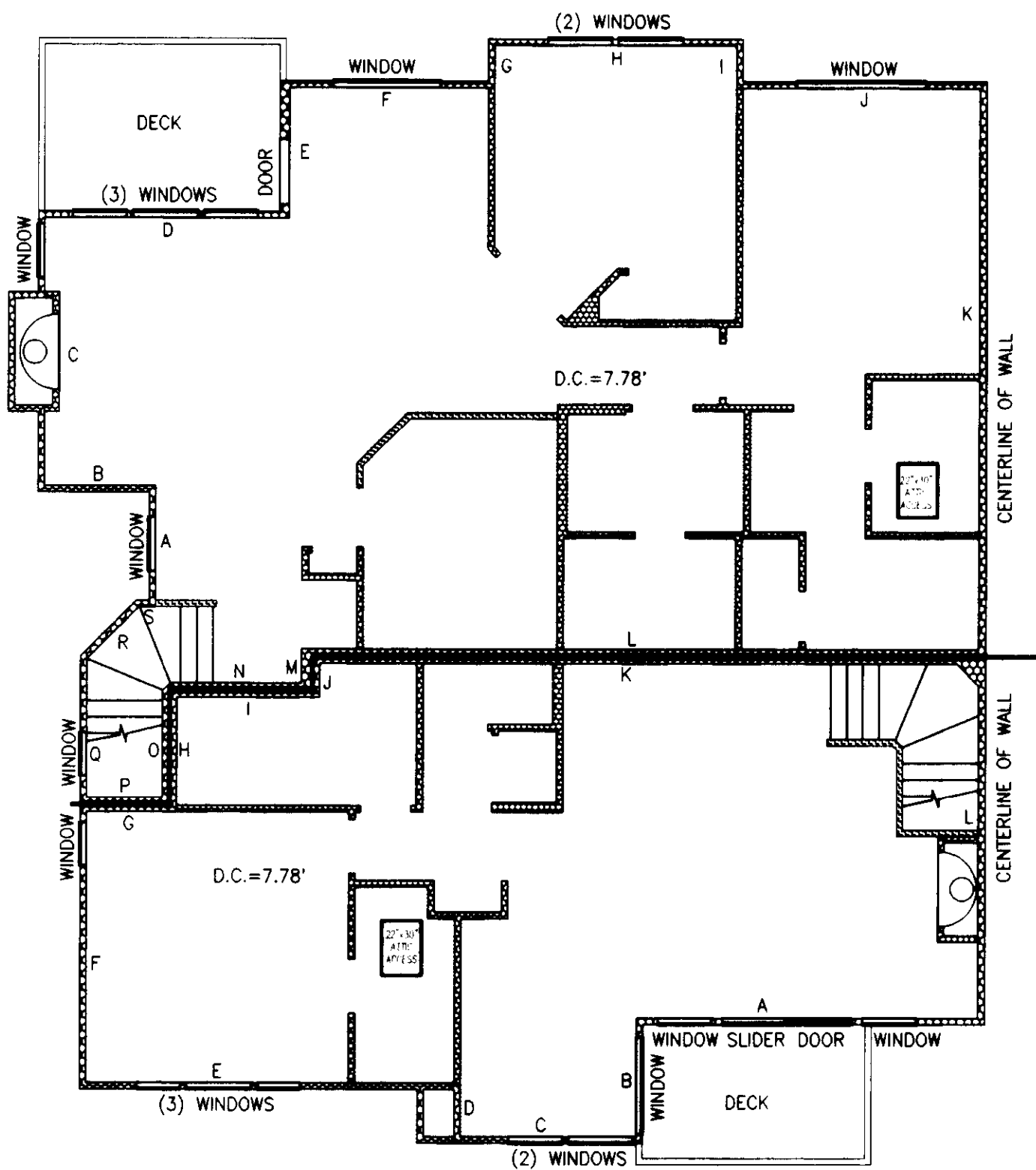


SAMMAMISH POINTE PHASE 2, A CONDOMINIUM

A PORTION OF THE SOUTHWEST QUARTER OF SECTION 20,
TOWNSHIP 24 NORTH, RANGE 6 EAST, WILLAMETTE MERIDIAN
CITY OF ISSAQUAH, KING COUNTY, WASHINGTON

UNIT TYPE D2 SECOND FLOOR PLAN
1" = 8'

BUILDING 6, UNIT 2
BUILDING 6, UNIT 5, MIRROR IMAGE
BUILDING 7, UNIT 2
BUILDING 8, UNIT 2
BUILDING 8, UNIT 5, MIRROR IMAGE
BUILDING 9, UNIT 2

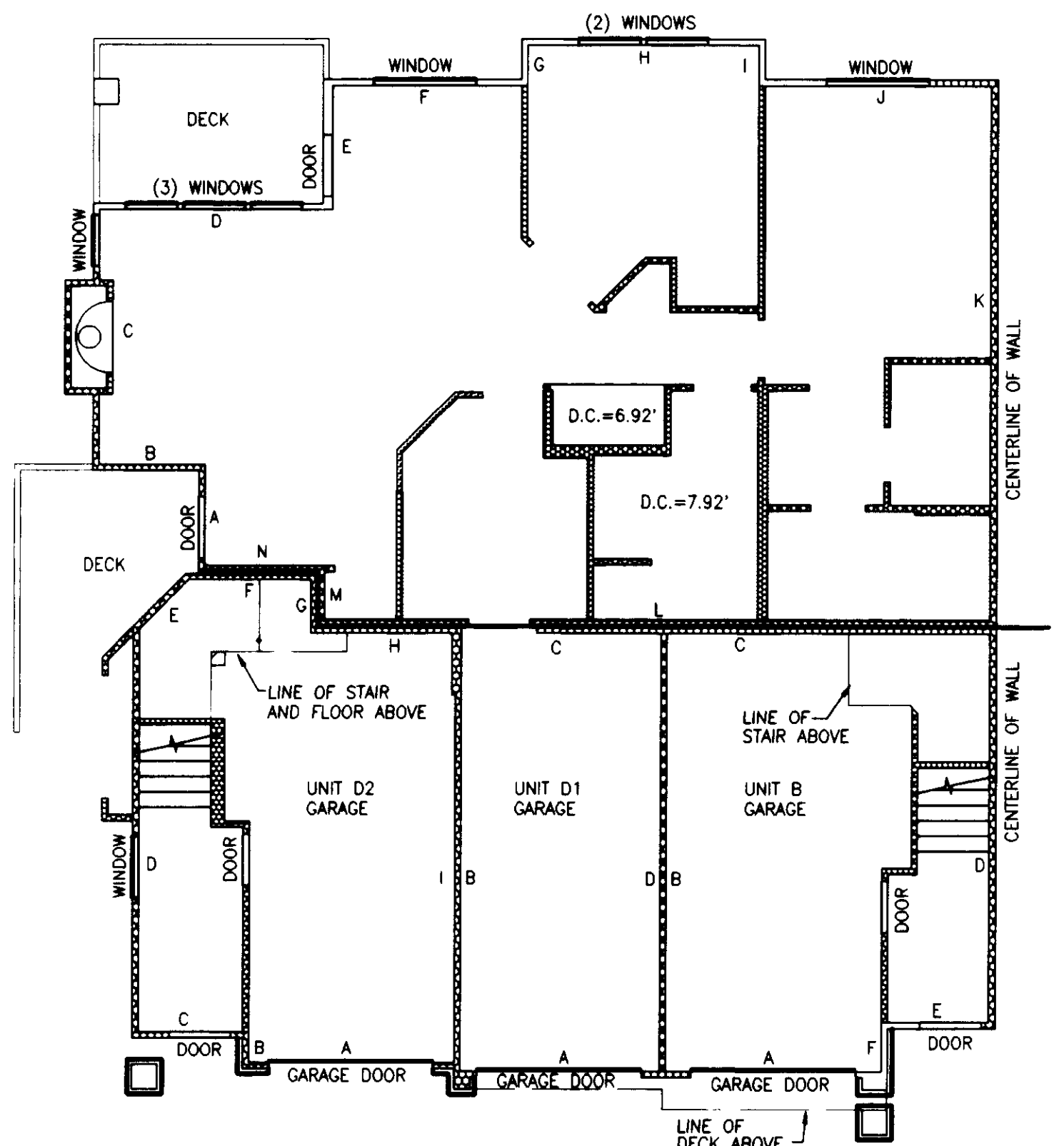


UNIT TYPE B SECOND FLOOR PLAN
1" = 8'

BUILDING 10, UNIT 5, MIRROR IMAGE
BUILDING 11, UNIT 5, MIRROR IMAGE
BUILDING 12, UNIT 4

UNIT TYPE D1 FIRST FLOOR PLAN
1" = 8'

BUILDING 6, UNIT 1
BUILDING 6, UNIT 6, MIRROR IMAGE
BUILDING 7, UNIT 1
BUILDING 8, UNIT 1
BUILDING 8, UNIT 6, MIRROR IMAGE
BUILDING 9, UNIT 1



GARAGE-UNIT TYPES D2, D1, AND B FIRST FLOOR PLAN
1" = 8'

UNIT TYPE B
BUILDING 10, UNIT 5, MIRROR IMAGE
BUILDING 11, UNIT 5, MIRROR IMAGE
BUILDING 12, UNIT 4

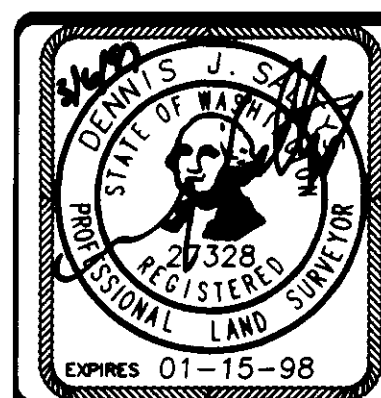
UNIT TYPE D1
BUILDING 6, UNIT 1
BUILDING 6, UNIT 6, MIRROR IMAGE
BUILDING 7, UNIT 1
BUILDING 8, UNIT 1
BUILDING 8, UNIT 6, MIRROR IMAGE
BUILDING 9, UNIT 1

UNIT TYPE D2
BUILDING 6, UNIT 2
BUILDING 6, UNIT 5, MIRROR IMAGE
BUILDING 7, UNIT 2
BUILDING 8, UNIT 2
BUILDING 8, UNIT 5, MIRROR IMAGE
BUILDING 9, UNIT 2

NOTES:

1. UNLESS OTHERWISE NOTED OR SHOWN HEREON, DIMENSIONS ARE ON THE INNER FACE OF THE OUTER WALLS OF THE UNIT. INNER WALLS ARE SHOWN FOR LAYOUT PURPOSES ONLY.
2. UNIT LAYOUT IS FROM PLANS BY MILBRANDT ARCHITECTS, SHEETS U-1 THROUGH U-18, WITH REVISION DATE OF 4-26-96.
3. SEE SHEET 8 FOR UNIT DIMENSIONS AND CEILING HEIGHTS. DROP CEILING HEIGHTS ARE SHOWN ON UNIT LAYOUT SHEETS 4 THROUGH 7.

JOB NO. 5335



Barghausen Consulting Engineers, Inc.
Civil Engineering, Land Planning, Surveying, Environmental Services
18215 72nd Avenue South Kent, WA. 98032
Telephone: (206) 251-6222 Fax: (206) 251-8782
NE 1/4 & SE 1/4 OF SW 1/4, SEC. 20-24N-8E
SHEET 5 OF 8