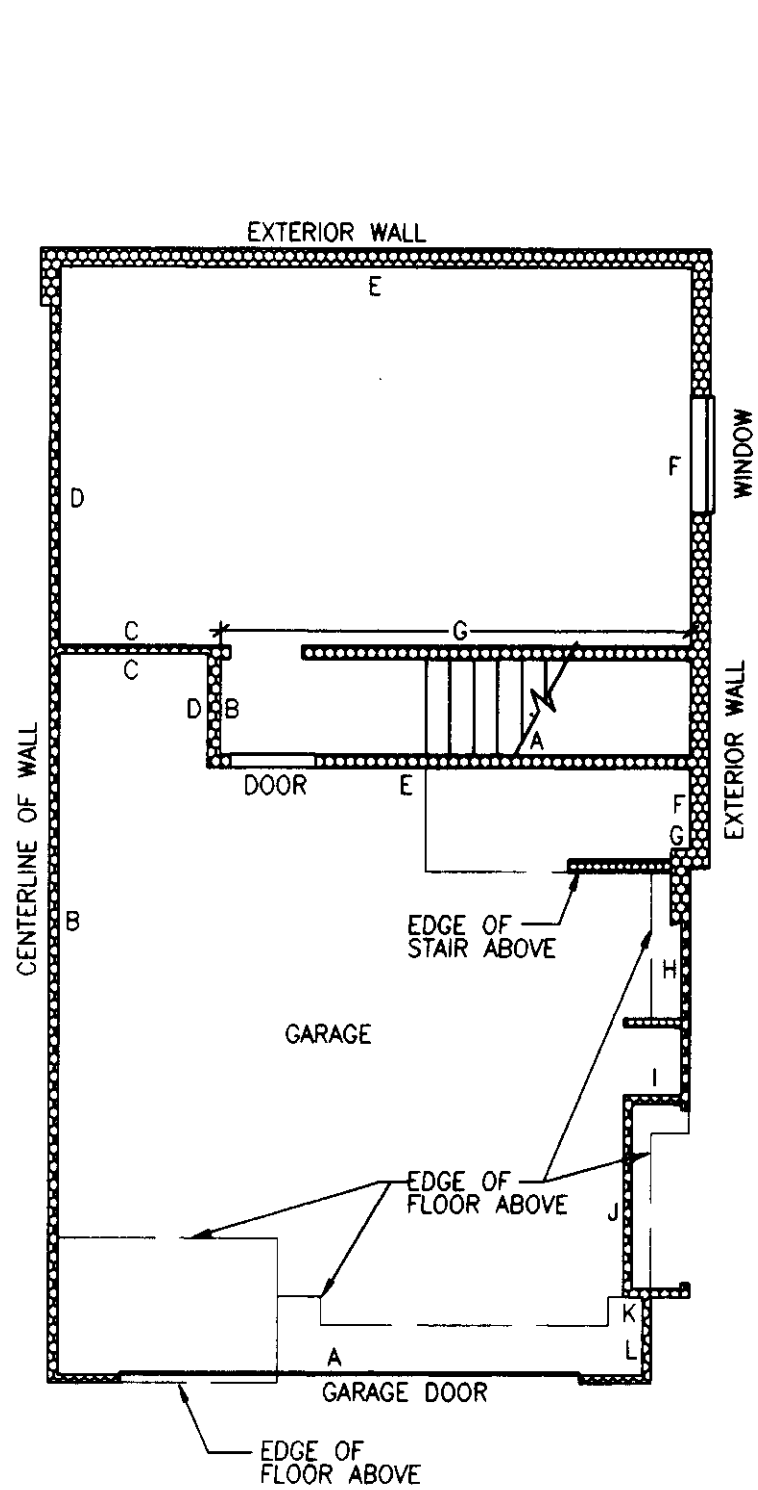
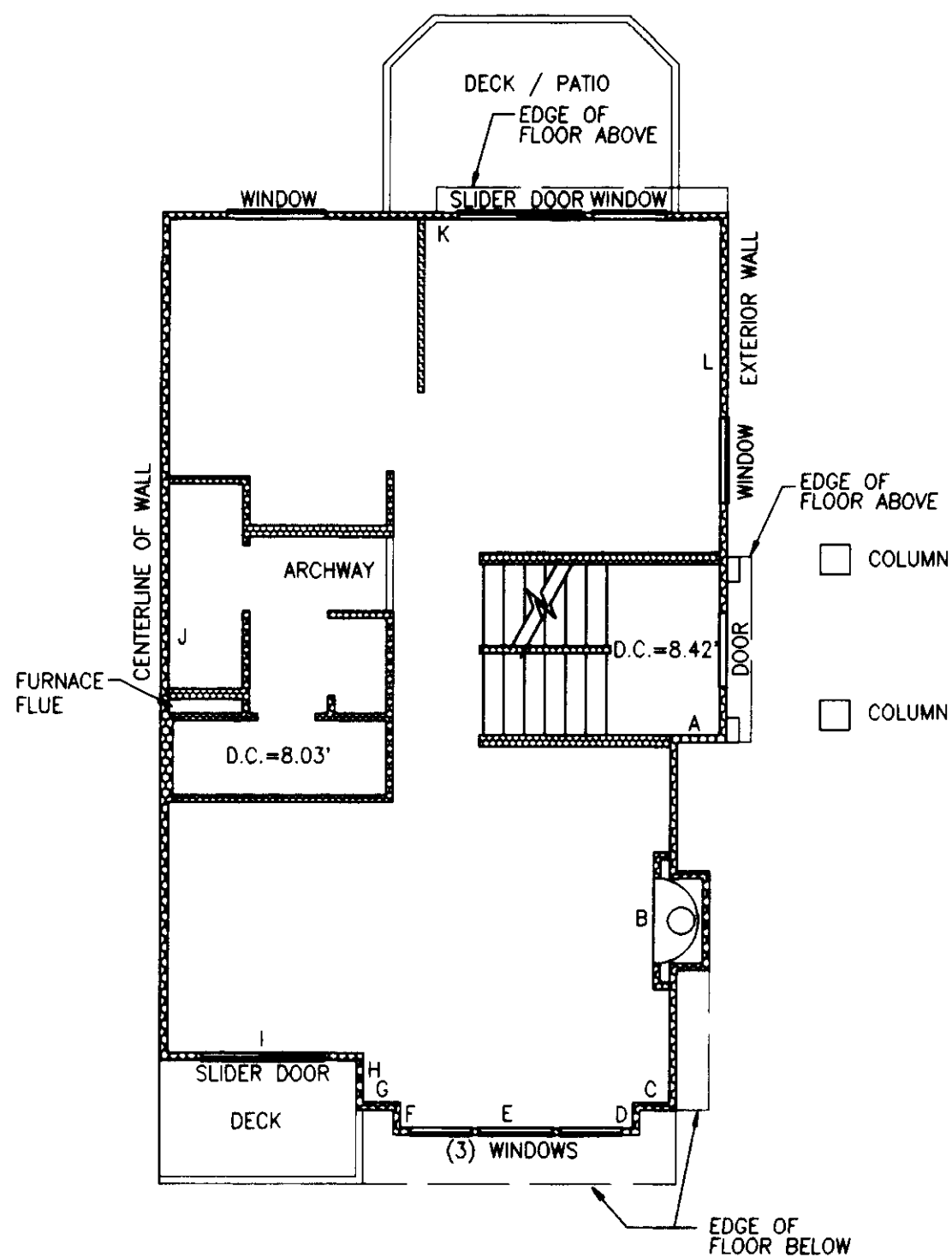


SAMMAMISH POINTE PHASE 2, A CONDOMINIUM

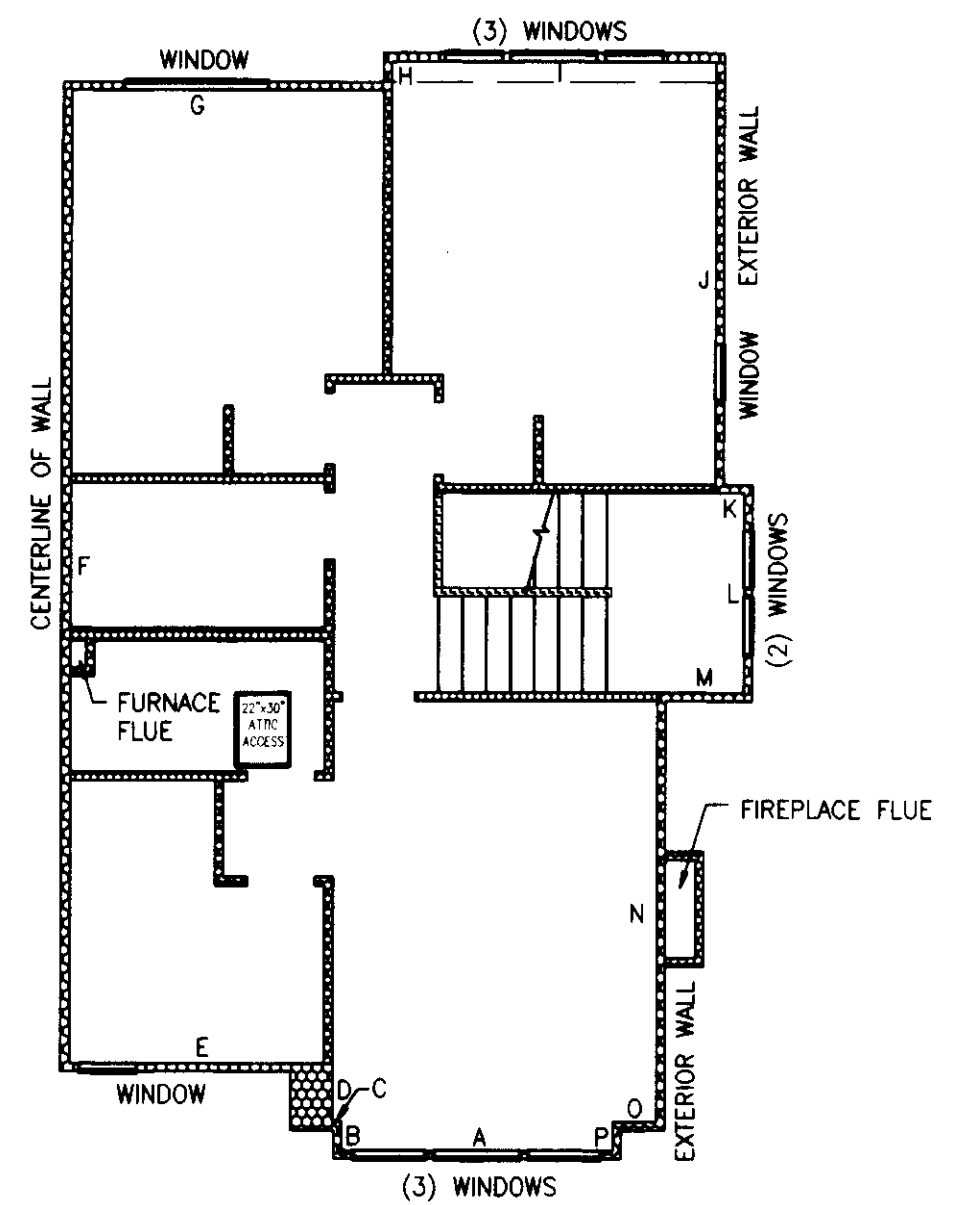
A PORTION OF THE SOUTHWEST QUARTER OF SECTION 20,
TOWNSHIP 24 NORTH, RANGE 6 EAST, WILLAMETTE MERIDIAN
CITY OF ISSAQUAH, KING COUNTY, WASHINGTON



UNIT TYPE F AND F1 BASEMENT FLOOR
1" = 8'

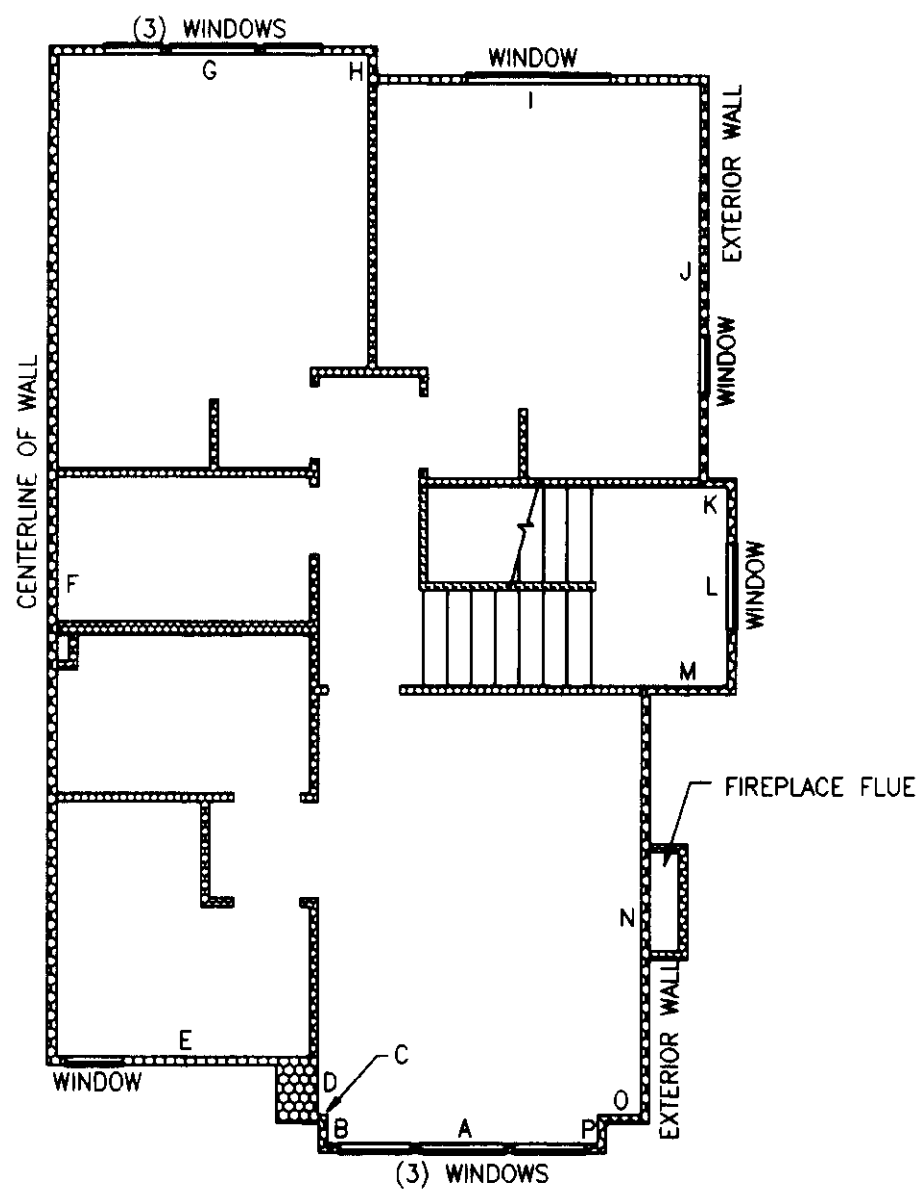


UNIT TYPE F AND F1 FIRST FLOOR
1" = 8'



UNIT TYPE F SECOND FLOOR
1" = 8'

BUILDING 15, UNIT 1, MIRROR IMAGE
BUILDING 16, UNIT 1, MIRROR IMAGE



UNIT TYPE F1 SECOND FLOOR
1" = 8'

BUILDING 15, UNIT 4
BUILDING 16, UNIT 4

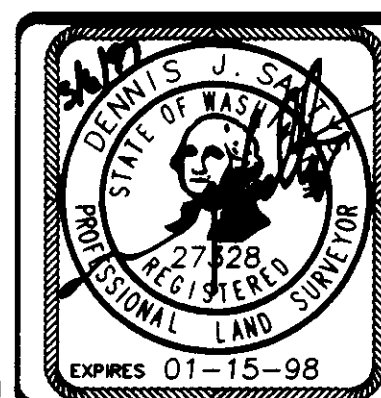
NOTES:

1. UNLESS OTHERWISE NOTED OR SHOWN HEREON, DIMENSIONS ARE ON THE INNER FACE OF THE OUTER WALLS OF THE UNIT. INNER WALLS ARE SHOWN FOR LAYOUT PURPOSES ONLY.

2. UNIT LAYOUT IS FROM PLANS BY MILBRANDT ARCHITECTS, SHEETS U-1 THROUGH U-18, WITH REVISION DATE OF 4-26-96.

SEE SHEET 8 FOR UNIT DIMENSIONS AND CEILING HEIGHTS. DROP CEILING HEIGHTS ARE SHOWN ON UNIT LAYOUT SHEETS 4 THROUGH 7.

JOB NO. 5335



Barghausen Consulting Engineers, Inc.
Civil Engineering, Land Planning, Surveying, Environmental Services
18215 72nd Avenue South Kent, WA. 98032
Telephone: (206) 251-6222 Fax: (206) 251-8782

NE 1/4 & SE 1/4 OF SW 1/4, SEC. 20-24N-6E

SHEET 7 OF 8