

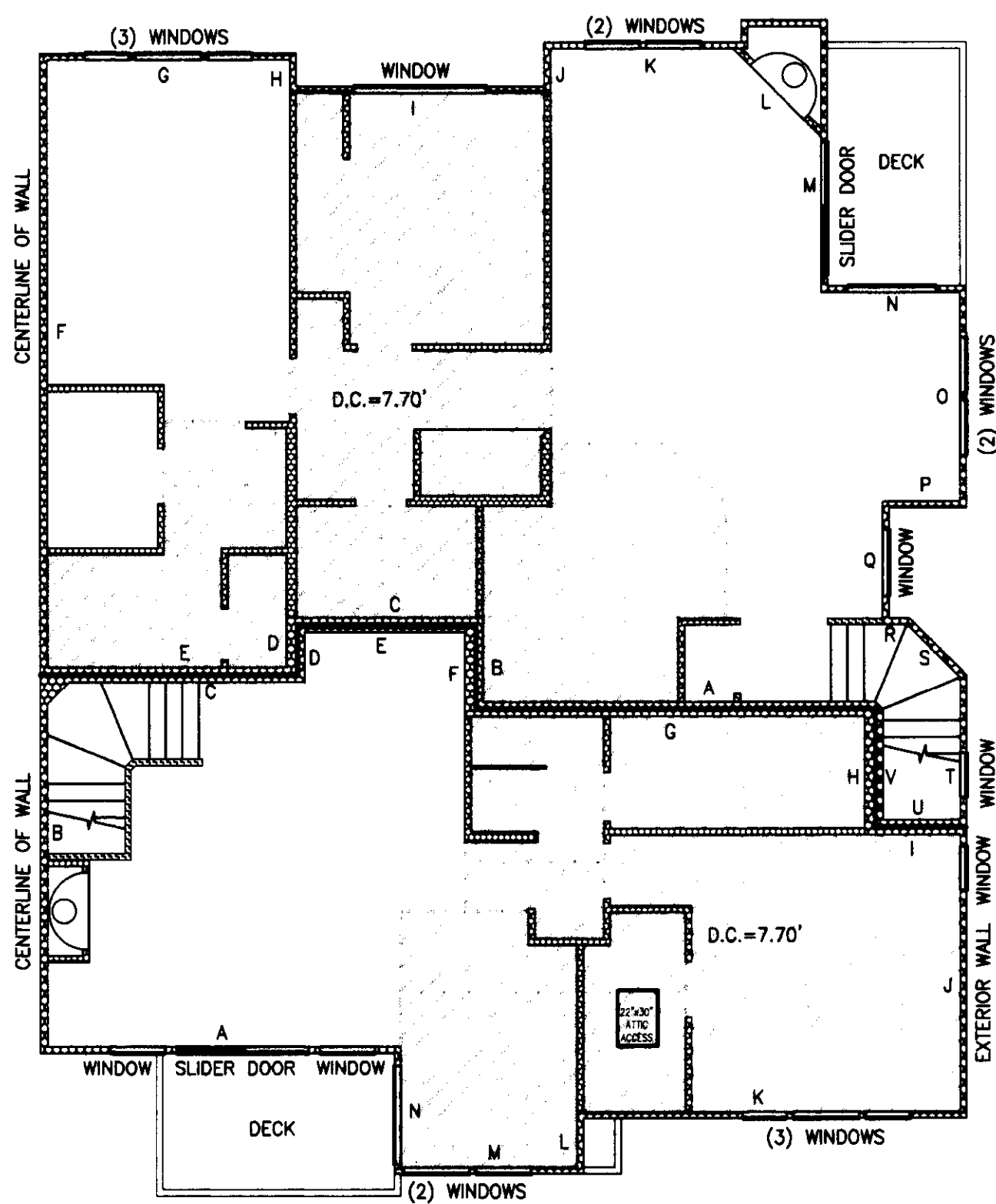
SAMMAMISH POINTE PHASE 3, 142 71

A CONDOMINIUM

A PORTION OF THE SOUTHWEST QUARTER OF SECTION 20,
TOWNSHIP 24 NORTH, RANGE 6 EAST, WILLAMETTE MERIDIAN
CITY OF ISSAQUAH, KING COUNTY, WASHINGTON

UNIT TYPE C2
1" = 8'
SECOND FLOOR PLAN

BUILDING 4, UNIT 5
BUILDING 13, UNIT 3, MIRROR IMAGE

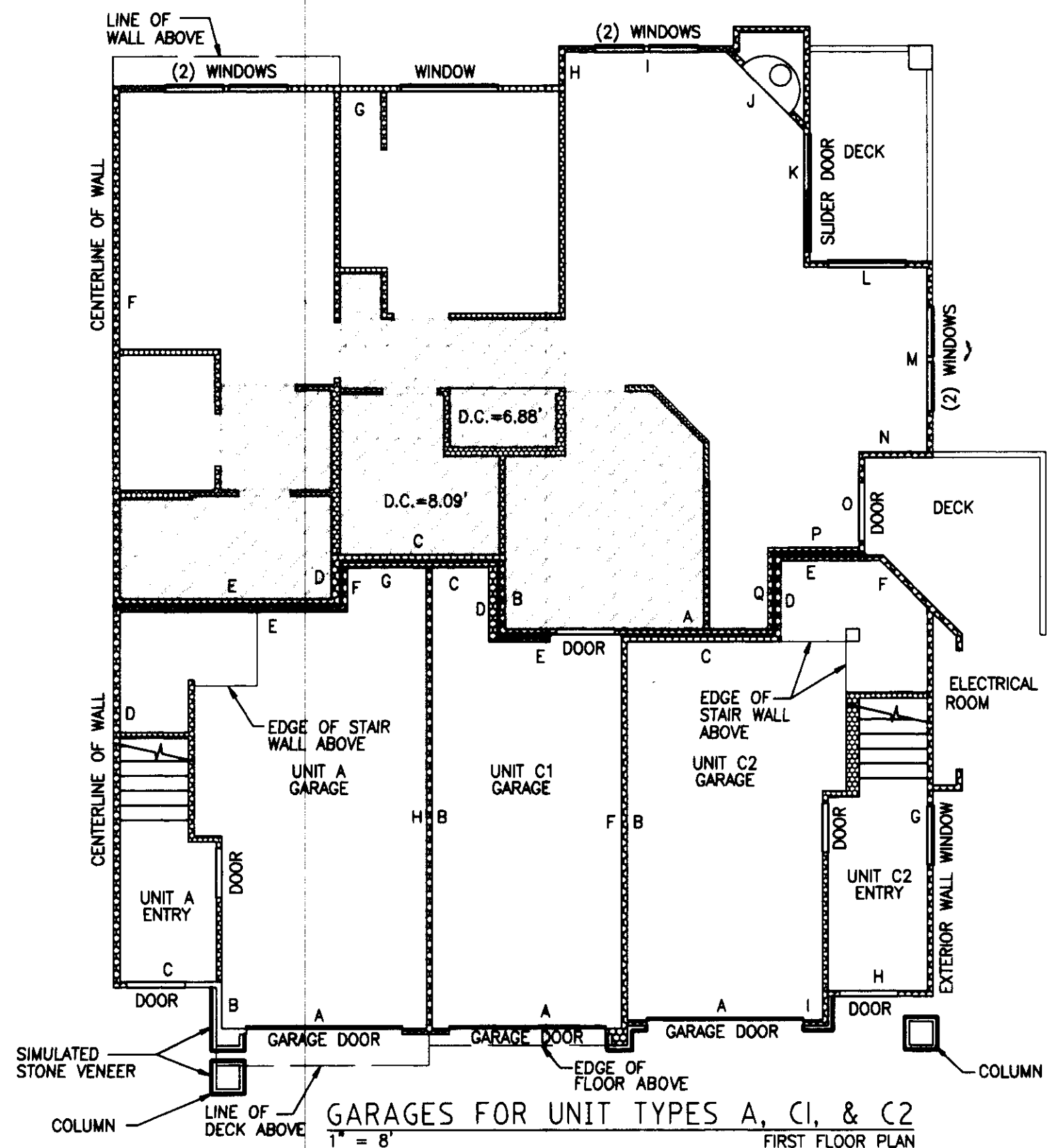


UNIT TYPE A
1" = 8'
SECOND FLOOR PLAN

BUILDING 4, UNIT 4
BUILDING 13, UNIT 4, MIRROR IMAGE

UNIT TYPE C1
1" = 8'
FIRST FLOOR PLAN

BUILDING 4, UNIT 6
BUILDING 13, UNIT 2, MIRROR IMAGE



UNIT TYPE A
BUILDING 4, UNIT 4
BUILDING 13, UNIT 4, MIRROR IMAGE

UNIT TYPES C1
BUILDING 4, UNIT 6
BUILDING 13, UNIT 2, MIRROR IMAGE

UNIT TYPE C2
BUILDING 4, UNIT 5
BUILDING 13, UNIT 3, MIRROR IMAGE

D.C. = DROPPED CEILING

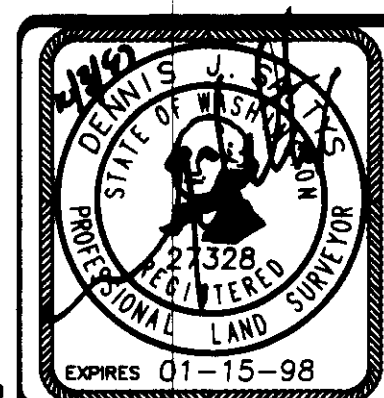
NOTES:

1. UNLESS OTHERWISE NOTED OR SHOWN HEREON, DIMENSIONS ARE ON THE INNER FACE OF THE OUTER WALLS OF THE UNIT. INNER WALLS ARE SHOWN FOR LAYOUT PURPOSES ONLY.

2. UNIT LAYOUT IS FROM PLANS BY MILBRANDT ARCHITECTS, SHEETS U-1 THROUGH U-18, WITH REVISION DATE OF 4-26-96.

SEE SHEETS 9 AND 10 FOR UNIT DIMENSIONS AND CEILING HEIGHTS. DROP CEILING HEIGHTS ARE SHOWN ON UNIT LAYOUT SHEETS 4 THROUGH 87.

JOB NO. 5335



Barghausen Consulting Engineers, Inc.
Civil Engineering, Land Planning, Surveying, Environmental Services
18215 72nd Avenue South Kent, WA. 98032
Telephone: (425) 251-6222 Fax: (425) 251-8782

NE 1/4 & SE 1/4 OF SW 1/4, SEC. 20-24N-8E

SHEET 4 OF 10