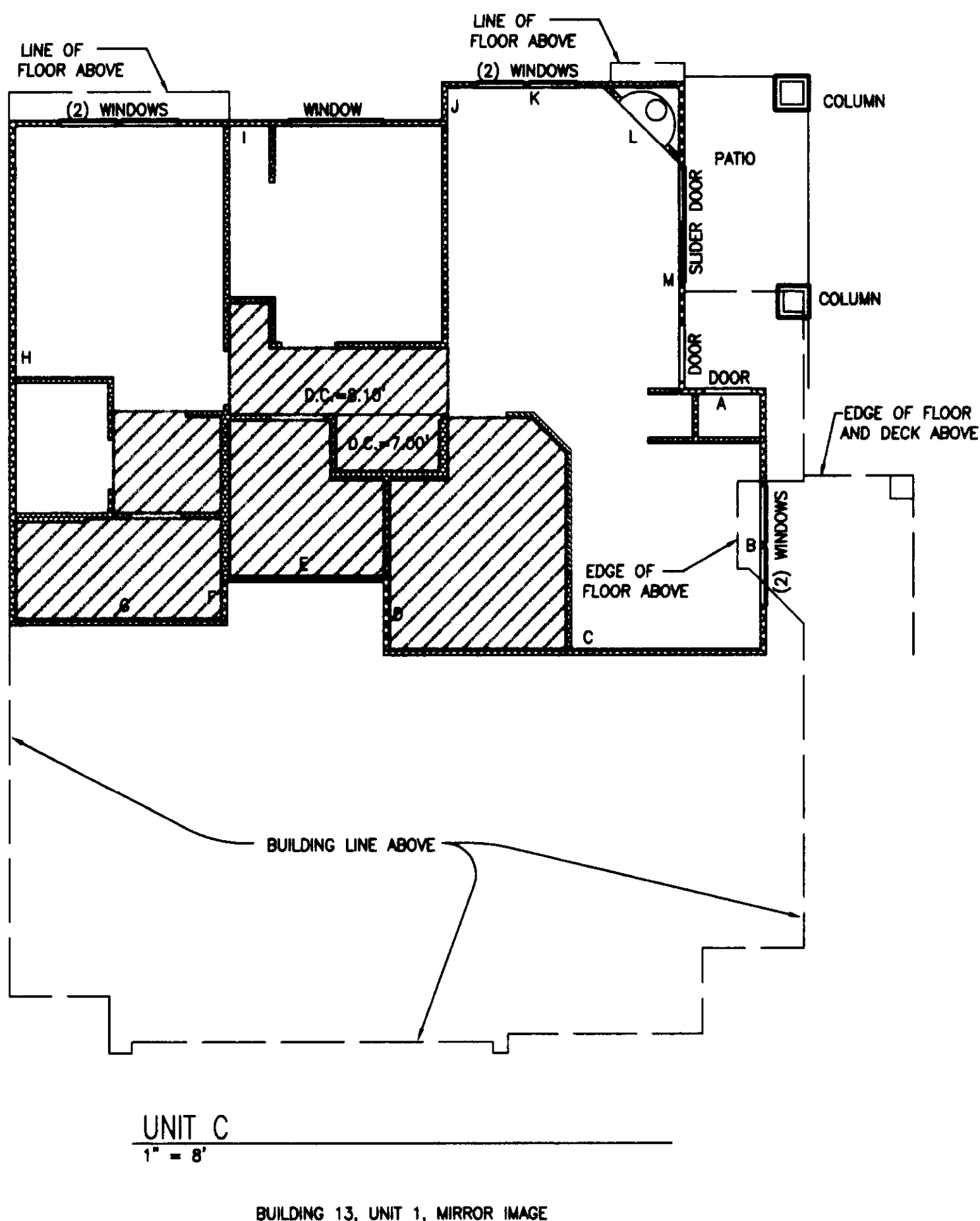


SAMMAMISH POINTE PHASE 3, 142 72

A CONDOMINIUM

A PORTION OF THE SOUTHWEST QUARTER OF SECTION 20,
TOWNSHIP 24 NORTH, RANGE 6 EAST, WILLAMETTE MERIDIAN
CITY OF ISSAQUAH, KING COUNTY, WASHINGTON

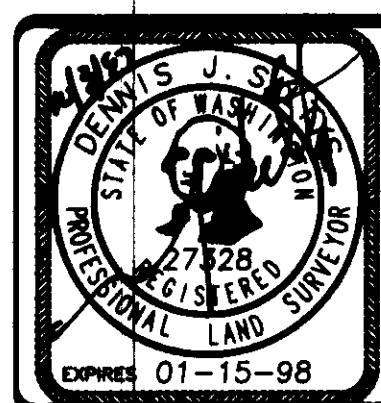
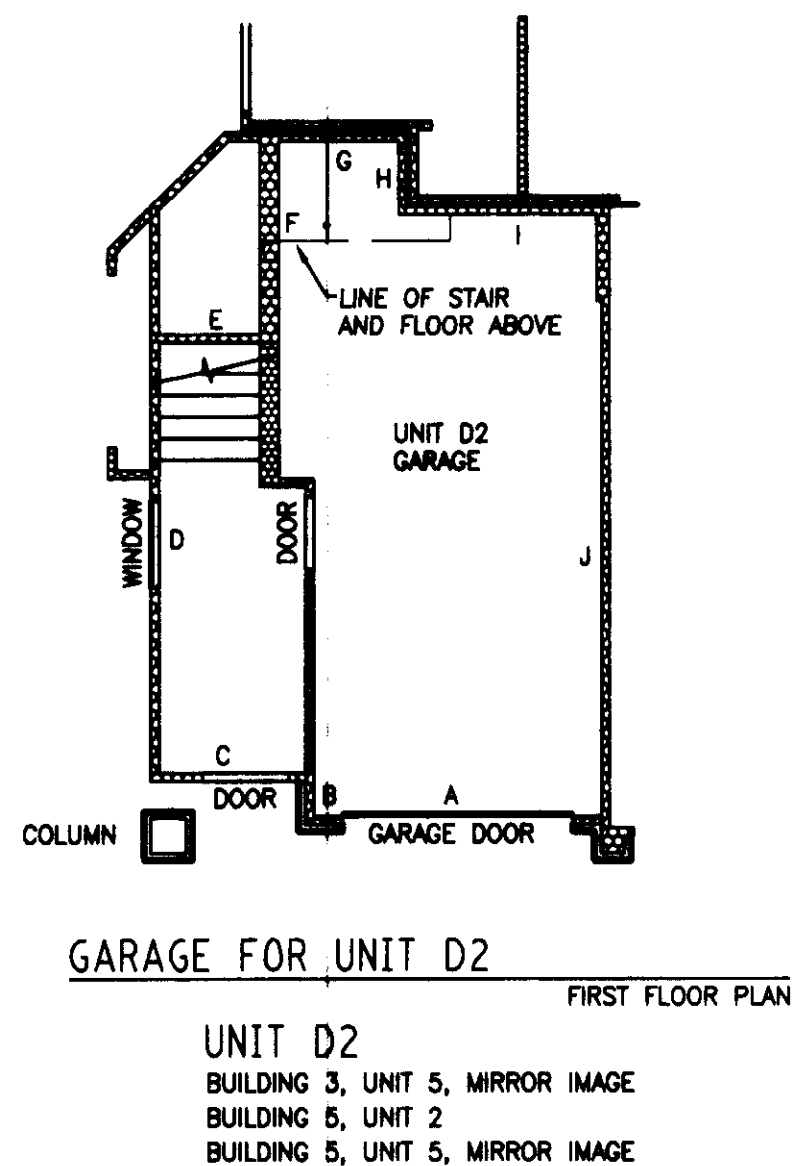
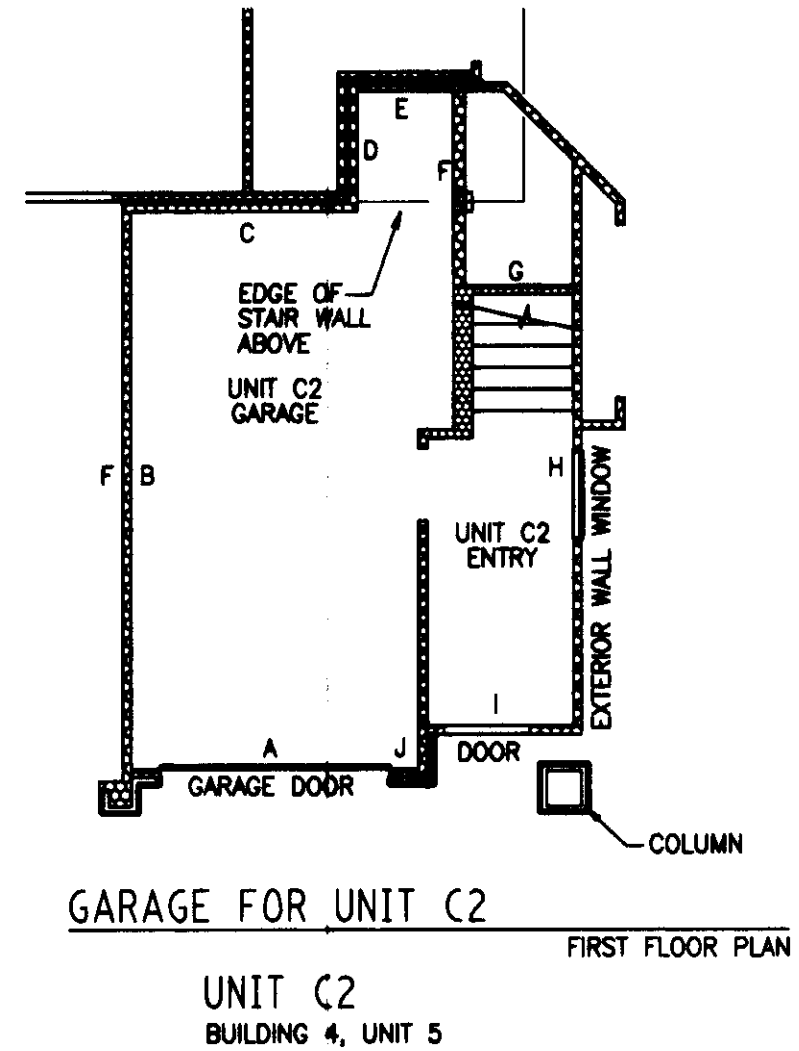


NOTES:

1. UNLESS OTHERWISE NOTED OR SHOWN HEREON, DIMENSIONS ARE ON THE INNER FACE OF THE OUTER WALLS OF THE UNIT. INNER WALLS ARE SHOWN FOR LAYOUT PURPOSES ONLY.

2. UNIT LAYOUT IS FROM PLANS BY MILBRANDT ARCHITECTS, SHEETS U-1 THROUGH U-18, WITH REVISION DATE OF 4-26-96.

SEE SHEET 9 AND 10 FOR UNIT DIMENSIONS AND CEILING HEIGHTS. DROP CEILING HEIGHTS ARE SHOWN ON UNIT LAYOUT SHEETS 4 THROUGH 8 OF 10.



Barghausen Consulting Engineers, Inc.
Civil Engineering, Land Planning, Surveying, Environmental Services
18215 72nd Avenue South Kent, WA. 98032
Telephone: (425) 251-6222 Fax: (425) 251-8782

NE 1/4 & SE 1/4 OF SW 1/4, SEC. 20-24N-8E

SHEET 5 OF 10

JOB NO. 5335

142 72
VOLUME/PAGE