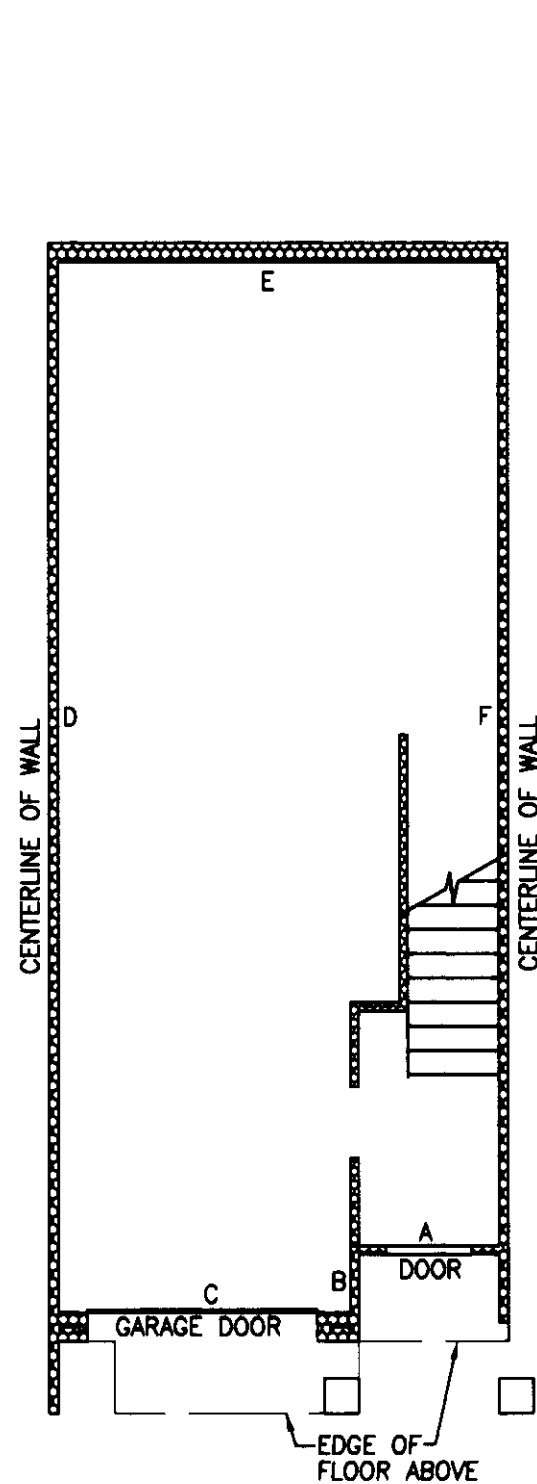


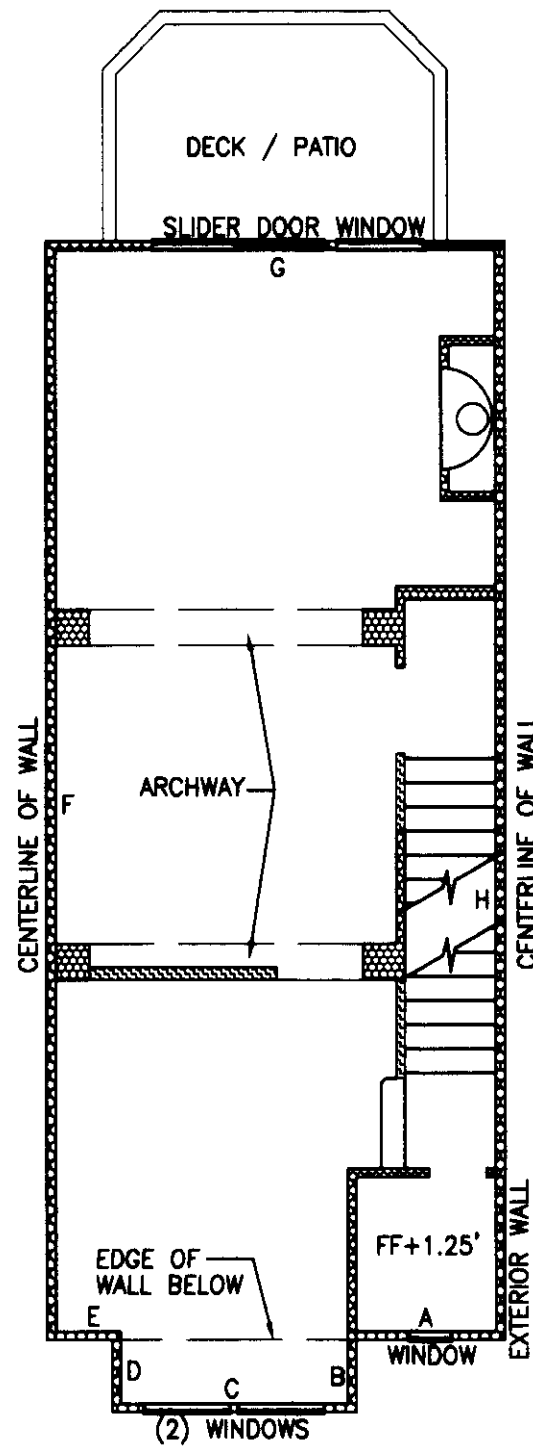
SAMMAMISH POINTE PHASE 3, 142 74

A CONDOMINIUM

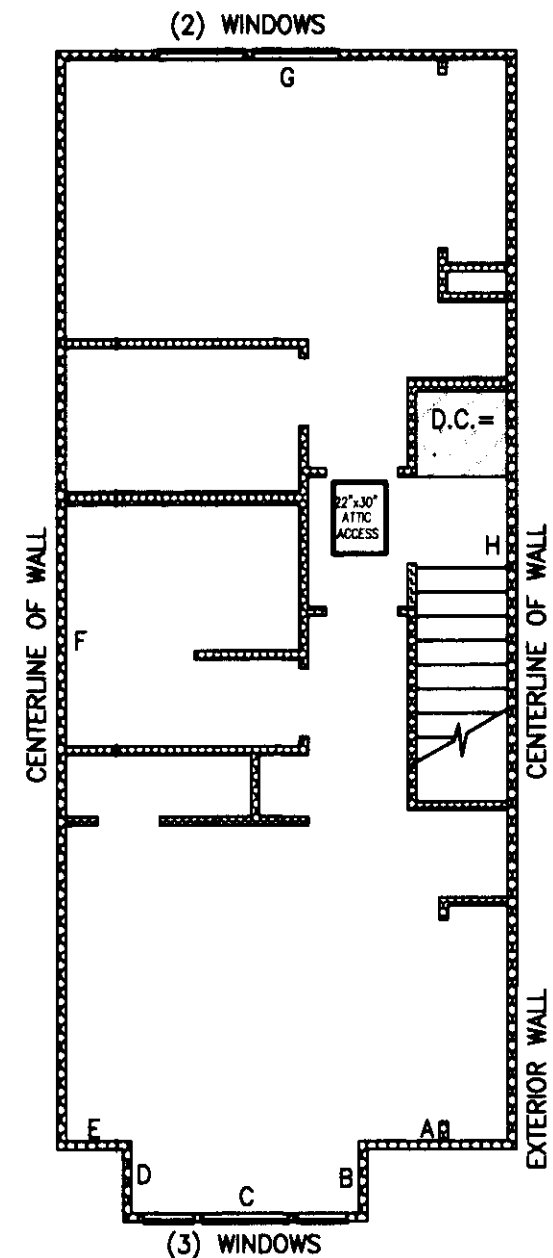
A PORTION OF THE SOUTHWEST QUARTER OF SECTION 20,
TOWNSHIP 24 NORTH, RANGE 6 EAST, WILLAMETTE MERIDIAN
CITY OF ISSAQUAH, KING COUNTY, WASHINGTON



UNIT TYPE E BASEMENT/GARAGE FLOOR PLAN
1" = 8'

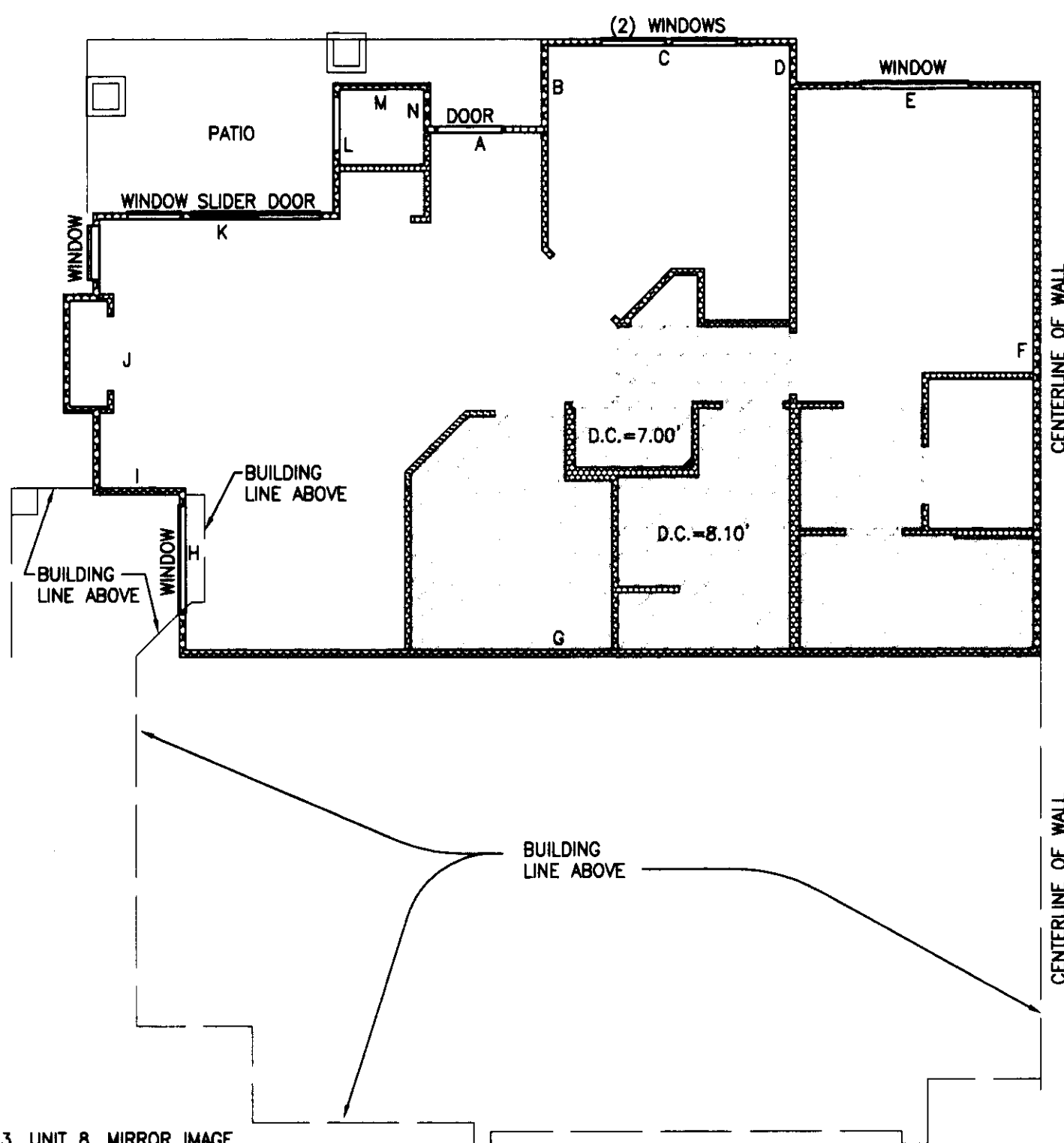


UNIT TYPE E FIRST FLOOR PLAN
1" = 8'



UNIT TYPE E SECOND FLOOR PLAN
1" = 8'

BUILDING 19, UNIT 2, MIRROR IMAGE
BUILDING 19, UNIT 3
BUILDING 20, UNIT 2, MIRROR IMAGE
BUILDING 20, UNIT 3
BUILDING 21, UNIT 2, MIRROR IMAGE
BUILDING 21, UNIT 3



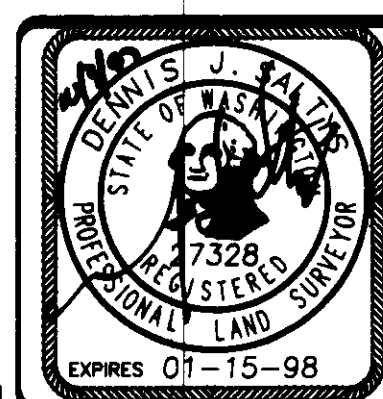
BUILDING 13, UNIT 8, MIRROR IMAGE

UNIT TYPE D BASEMENT FLOOR PLAN
1" = 8'

NOTES:

- UNLESS OTHERWISE NOTED OR SHOWN HEREON, DIMENSIONS ARE ON THE INNER FACE OF THE OUTER WALLS OF THE UNIT. INNER WALLS ARE SHOWN FOR LAYOUT PURPOSES ONLY.
 - UNIT LAYOUT IS FROM PLANS BY MILBRANDT ARCHITECTS, SHEETS U-1 THROUGH U-18, WITH REVISION DATE OF 4-26-96.
- SEE SHEETS 9 AND 10 FOR UNIT DIMENSIONS AND CEILING HEIGHTS. DROP CEILING HEIGHTS ARE SHOWN ON UNIT LAYOUT SHEETS 4 THROUGH 8.

JOB NO. 5335



Barghausen Consulting Engineers, Inc.
Civil Engineering, Land Planning, Surveying, Environmental Services
18215 72nd Avenue South Kent, WA. 98032
Telephone: (425) 251-6222 Fax: (425) 251-8782

NE 1/4 & SE 1/4 OF SW 1/4, SEC. 20-24N-6E

SHEET 7 OF 10