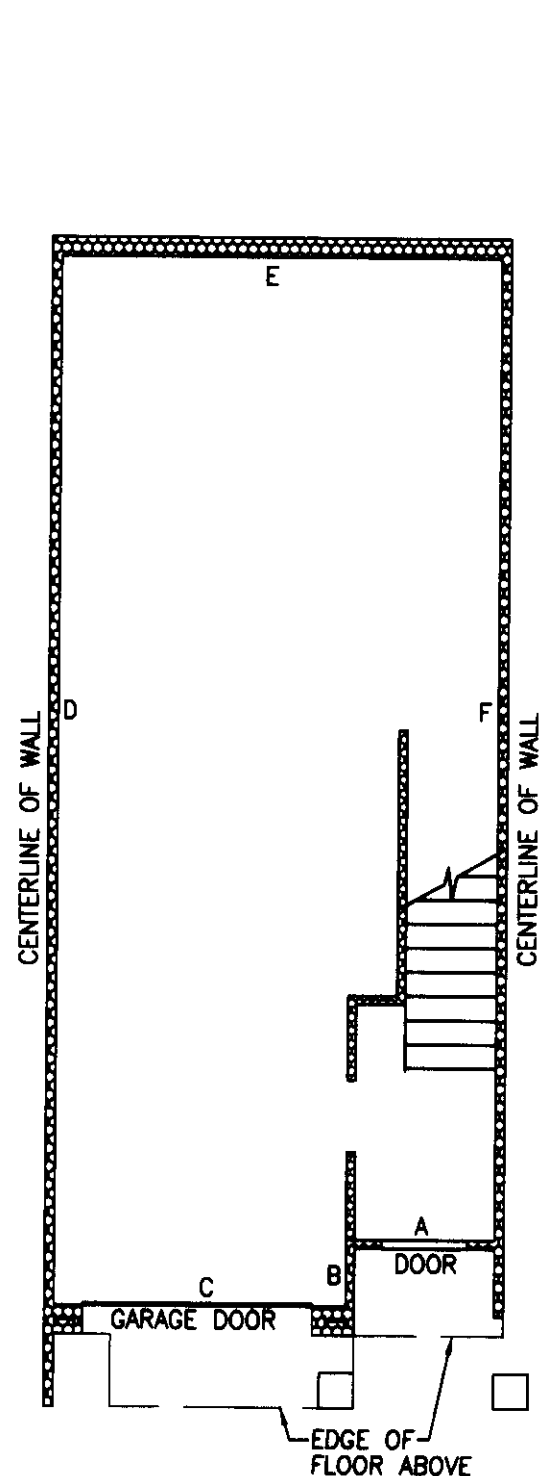
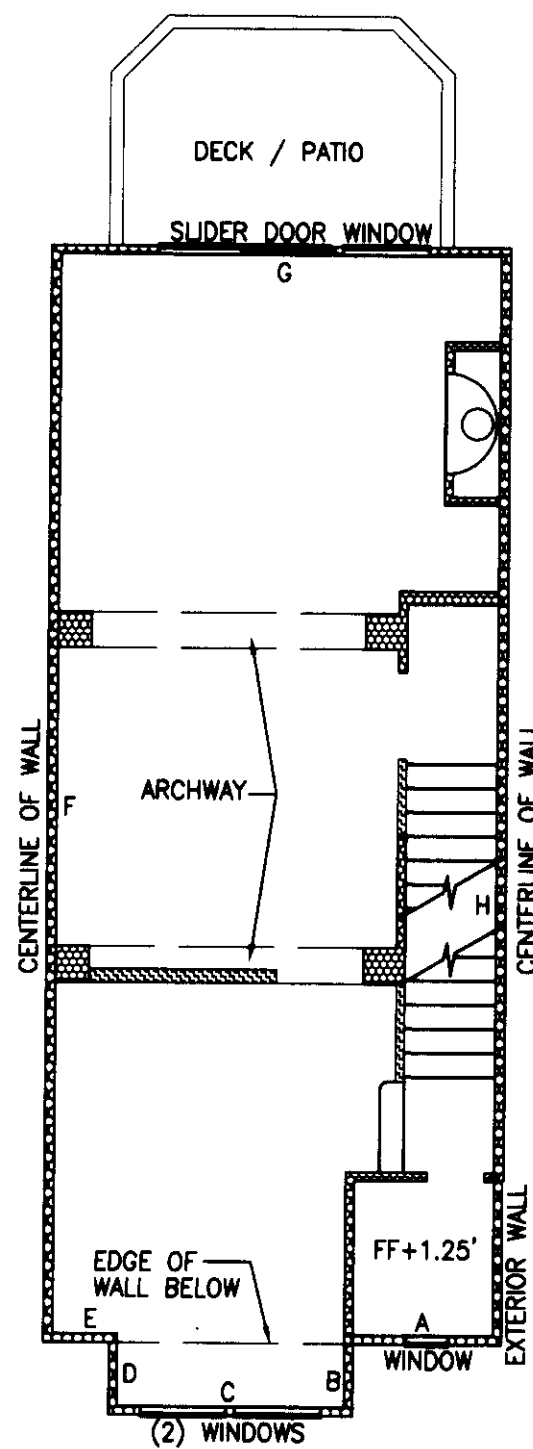


# SAMMAMISH POINTE PHASE 4, A CONDOMINIUM

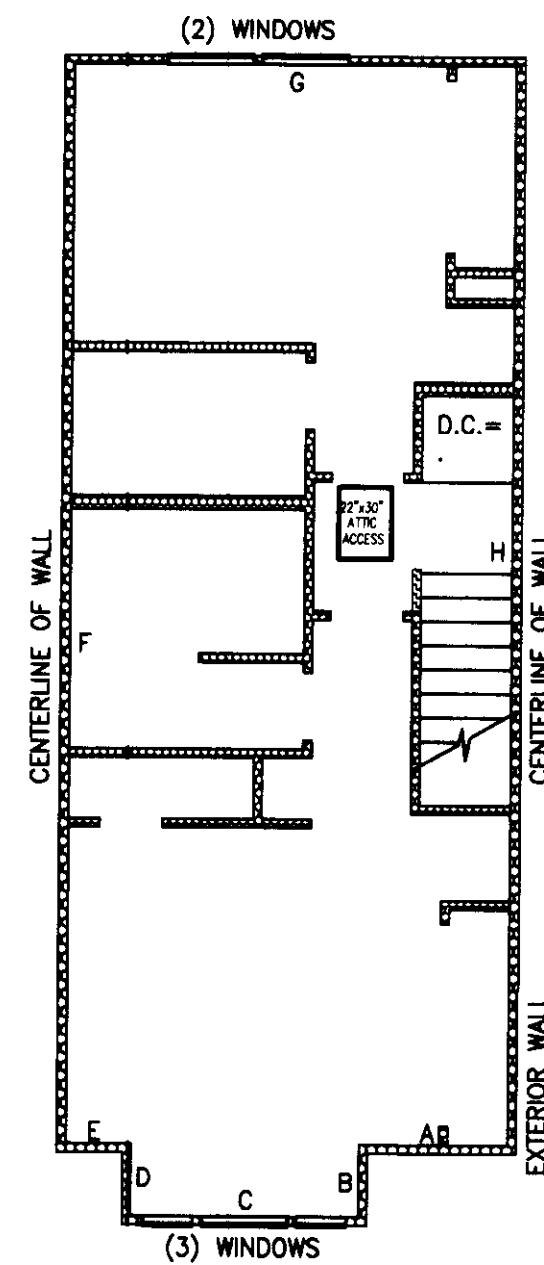
A PORTION OF THE SOUTHWEST QUARTER OF SECTION 20,  
TOWNSHIP 24 NORTH, RANGE 6 EAST, WILLAMETTE MERIDIAN  
CITY OF ISSAQUAH, KING COUNTY, WASHINGTON



UNIT TYPE E BASEMENT/GARAGE FLOOR PLAN  
1" = 8'



UNIT TYPE E FIRST FLOOR PLAN  
1" = 8'



UNIT TYPE E SECOND FLOOR PLAN  
1" = 8'

BUILDING 22, UNIT 2, MIRROR IMAGE  
BUILDING 22, UNIT 3  
BUILDING 23, UNIT 2, MIRROR IMAGE  
BUILDING 23, UNIT 3  
BUILDING 24, UNIT 2, MIRROR IMAGE  
BUILDING 24, UNIT 3

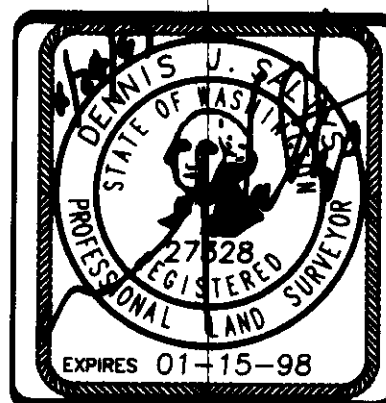
## NOTES:

1. UNLESS OTHERWISE NOTED OR SHOWN HEREON, DIMENSIONS ARE ON THE INNER FACE OF THE OUTER WALLS OF THE UNIT. INNER WALLS ARE SHOWN FOR LAYOUT PURPOSES ONLY.

2. UNIT LAYOUT IS FROM PLANS BY MILBRANDT ARCHITECTS, SHEETS U-1 THROUGH U-18, WITH REVISION DATE OF 4-26-96.

SEE SHEET 8 FOR UNIT DIMENSIONS AND CEILING HEIGHTS. DROP CEILING HEIGHTS ARE SHOWN ON UNIT LAYOUT SHEETS 4 THROUGH 7.

JOB NO. 5335



**Barghausen Consulting Engineers, Inc.**  
Civil Engineering, Land Planning, Surveying, Environmental Services  
18215 72nd Avenue South Kent, WA 98032  
Telephone: (425) 251-6222 Fax: (425) 251-8782  
NE 1/4 & SE 1/4 OF SW 1/4, SEC. 20-24N-6E  
SHEET 6 OF 8

VOLUME/PAGE