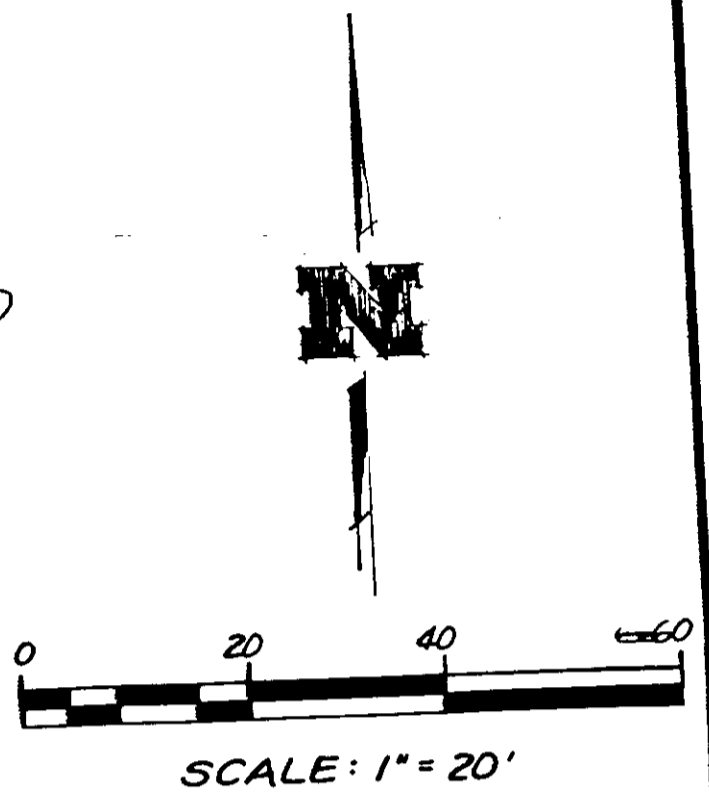
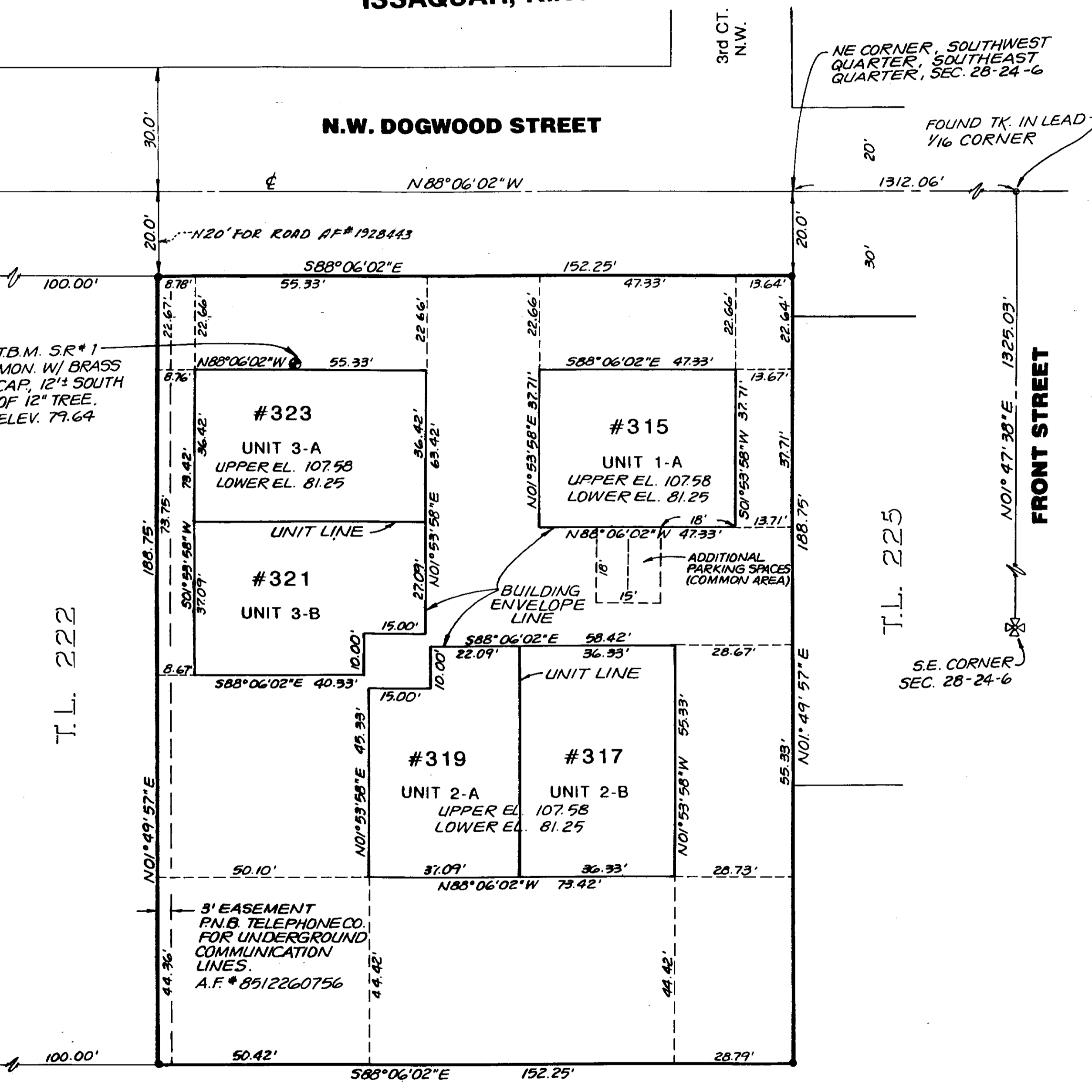


SILVER RUN A CONDOMINIUM

SW 1/4, SE 1/4, SEC. 28, TWP. 24 N., RGE. 6 E., W.M.
ISSAQUAH, KING COUNTY, WASHINGTON



BASIS OF BEARING: K.C.A.S.
 ELEVATION DATUM: SET
 T.B.M. S.R.#1 FROM KING
 COUNTY BENCHMARK
 PP- 1C-4.

OAK MEADOWS
 A CONDO VOL. 94/85-89

