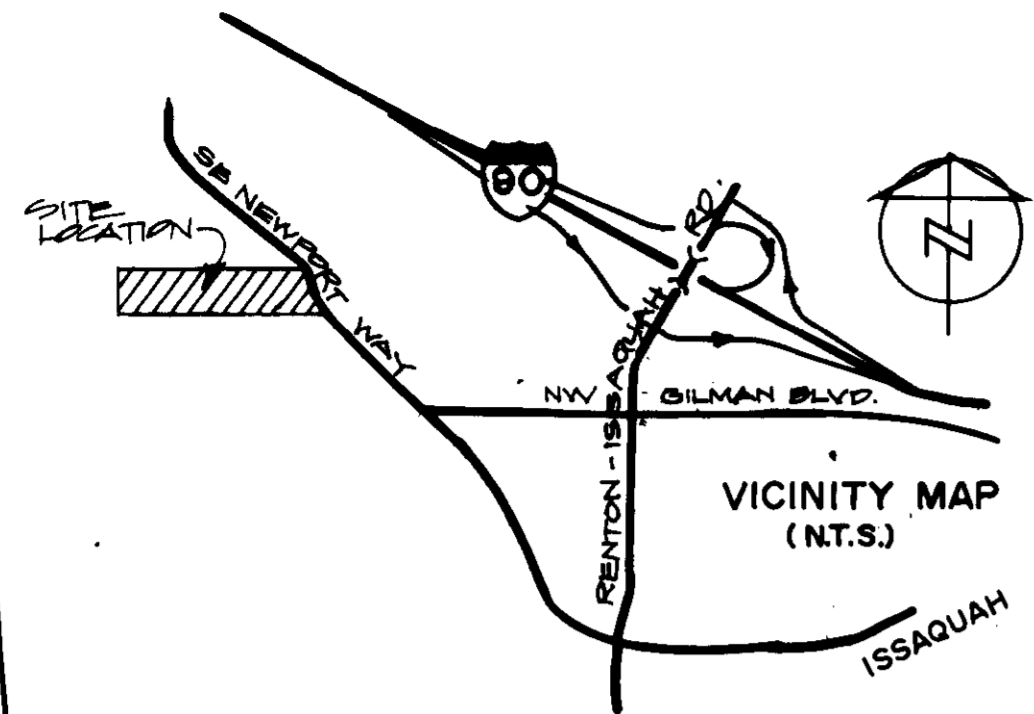


# SUMMERHILL

A PLANNED UNIT DEVELOPMENT  
SW1/4, SEC. 20, T. 24 N., R. 6 E., W.M.  
KING COUNTY, WASHINGTON  
CITY OF ISSAQUAH



### NOTES AND LEGEND:

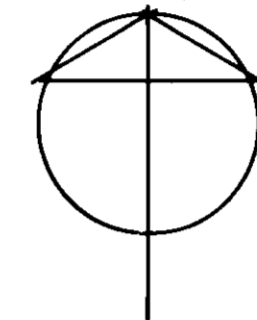
**BUILDING SETBACK LINES =**  
20' @ FRONT OF EACH LOT  
5' @ SIDE OF EACH LOT W/12' MIN. TOTAL SIDE YARDS.  
10' @ BACK OF EACH LOT

### EASEMENT LINES =

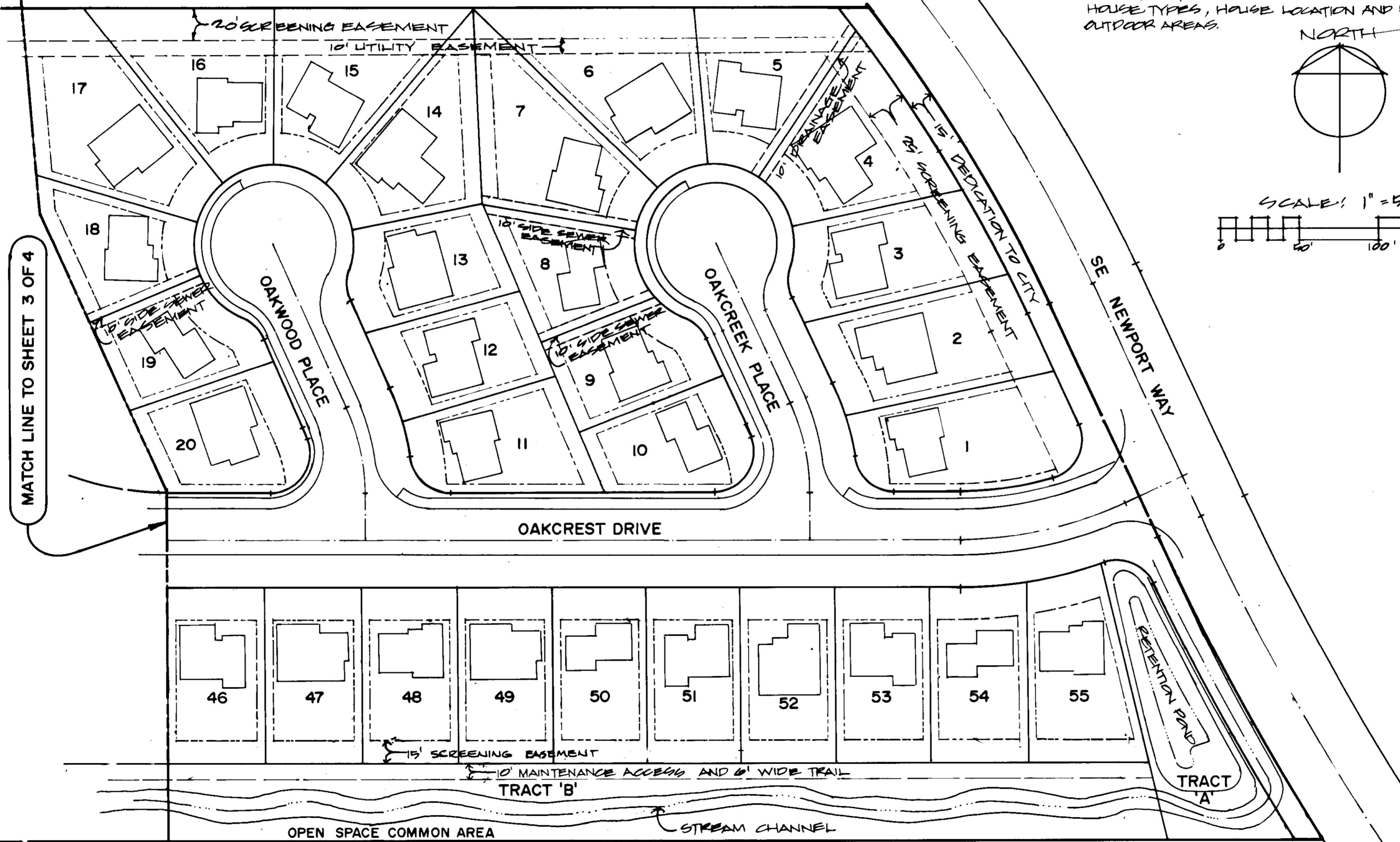
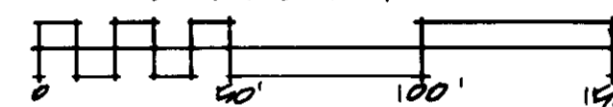
ALL LOT LINES ARE APPROXIMATE. SEE FINAL PLAT FOR EXACT LOCATION AND DIMENSIONS.

ALL STRUCTURES SHOWN REPRESENT SAMPLE HOUSE TYPES, HOUSE LOCATION AND PRIVATE OUTDOOR AREAS.

NORTH



SCALE: 1" = 50'



MATCH LINE TO SHEET 3 OF 4

