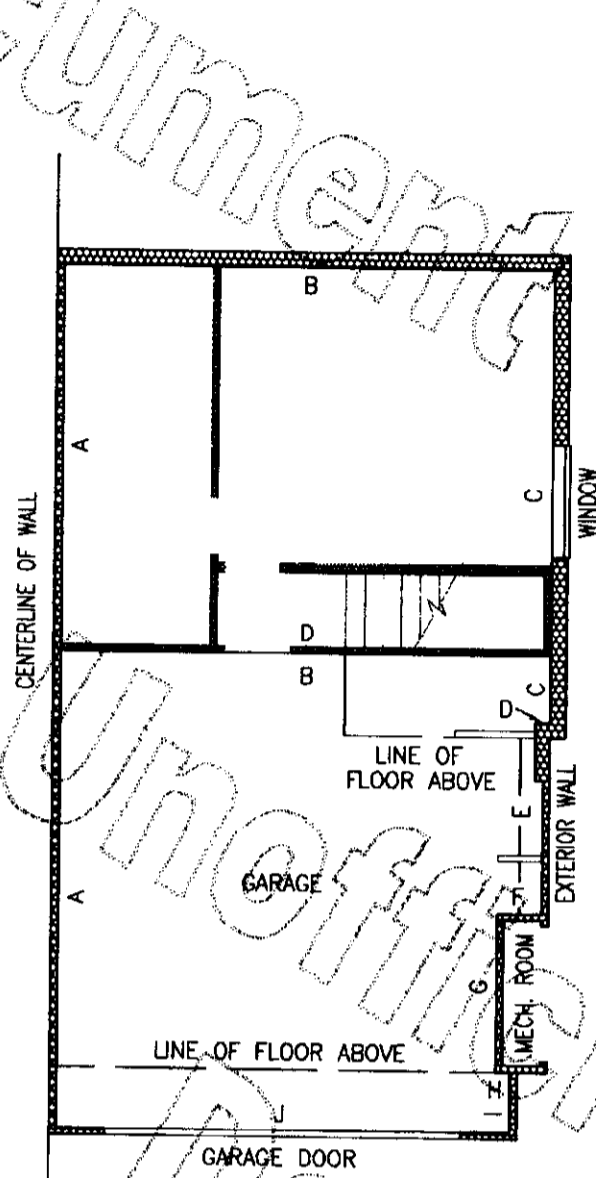


SUMMERHILL VILLAGE (PHASE 2)

A CONDOMINIUM

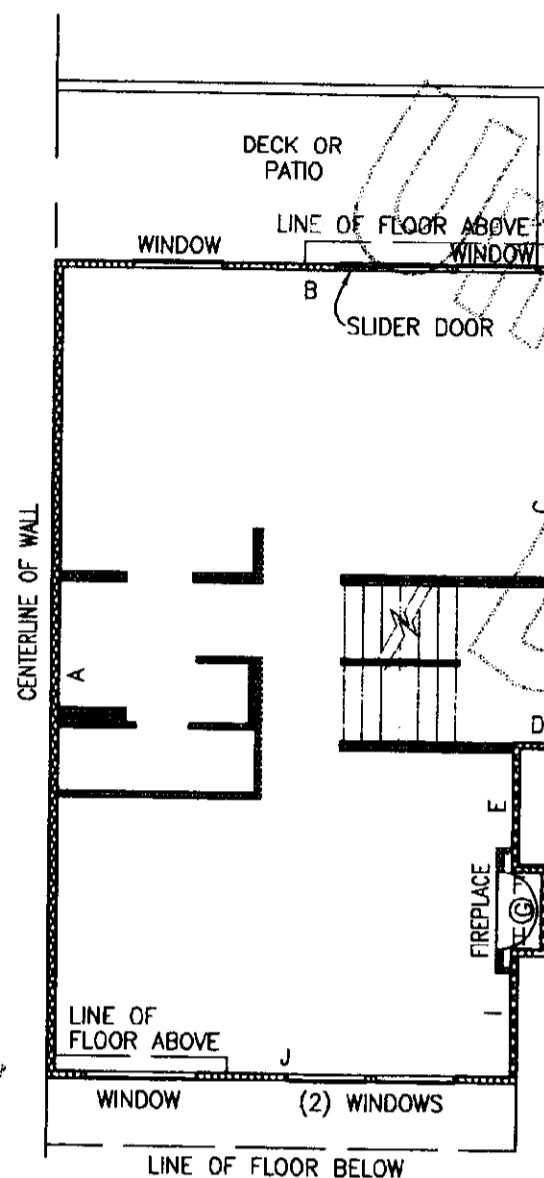
A PORTION OF THE SOUTHWEST QUARTER OF THE NORTHEAST QUARTER OF
SECTION 22, TOWNSHIP 24 NORTH, RANGE 6 EAST, WILLAMETTE MERIDIAN
KING COUNTY, WASHINGTON



UNIT TYPE F AND F1

1" = 8'

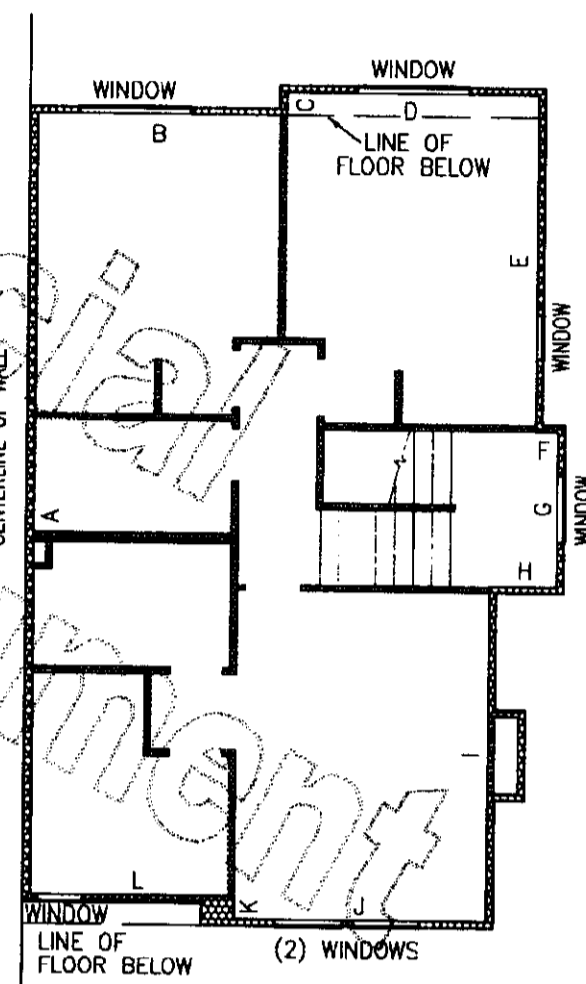
BLDG. 12, UNIT 1, MIRROR IMAGE
BLDG. 12, UNIT 4



UNIT TYPE F AND F1

1" = 8'

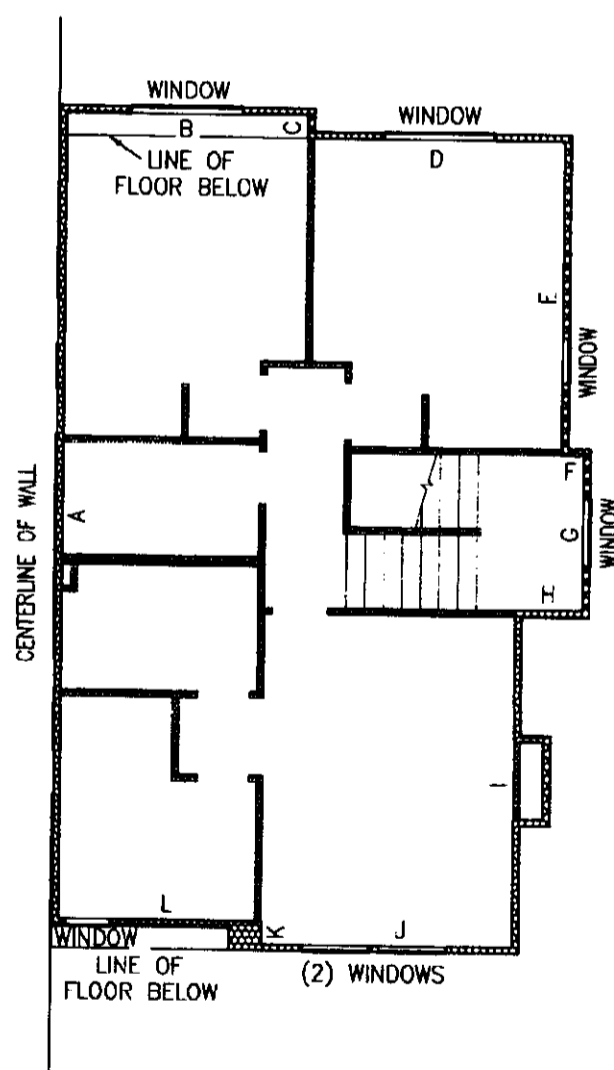
BLDG. 12, UNIT 1, MIRROR IMAGE
BLDG. 12, UNIT 4



UNIT TYPE F

1" = 8'

BLDG. 12, UNIT 1, MIRROR IMAGE



UNIT TYPE F1

1" = 8'

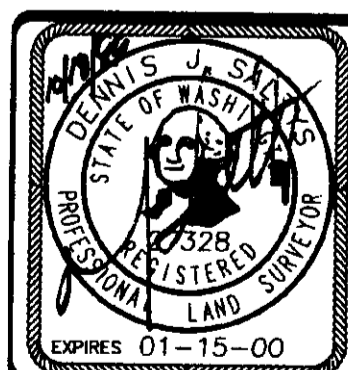
BLDG. 12, UNIT 4

NOTES:

1. UNLESS OTHERWISE NOTED OR SHOWN HEREON, DIMENSIONS ARE ON THE INNER FACE OF THE OUTER WALL OF THE UNIT. INNER WALLS ARE SHOWN FOR LAYOUT PURPOSES ONLY.

2. UNIT LAYOUT IS FROM PLANS BY MILBRANDT ARCHITECTS, SHEETS U-1 THROUGH U-16, WITH REVISION DATE OF 11-19-97.

SEE SHEET 8 FOR UNIT DIMENSIONS AND CEILING HEIGHTS. DROP CEILING (D.C.) HEIGHTS ARE SHOWN ON UNIT LAYOUT SHEETS 4 THROUGH 7 OF 8.



Barghausen Consulting Engineers, Inc.

Civil Engineering, Land Planning, Surveying, Environmental Services
18215 72nd Avenue South Kent, WA 98032
Telephone: (425) 251-6222 Fax: (425) 251-8782

SW1/4, NE1/4 SEC. 22-24N-6E

SHEET 7 OF 8

JOB NO. 5903

160 07

File: P:\SDSKPROJ\5903\SURVEY\PLATS\5903C027.DWG Date/Time: 10/13/1999 13:37 Scale: 1=8 Joanne Xre's