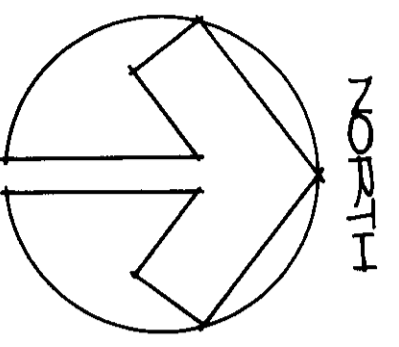


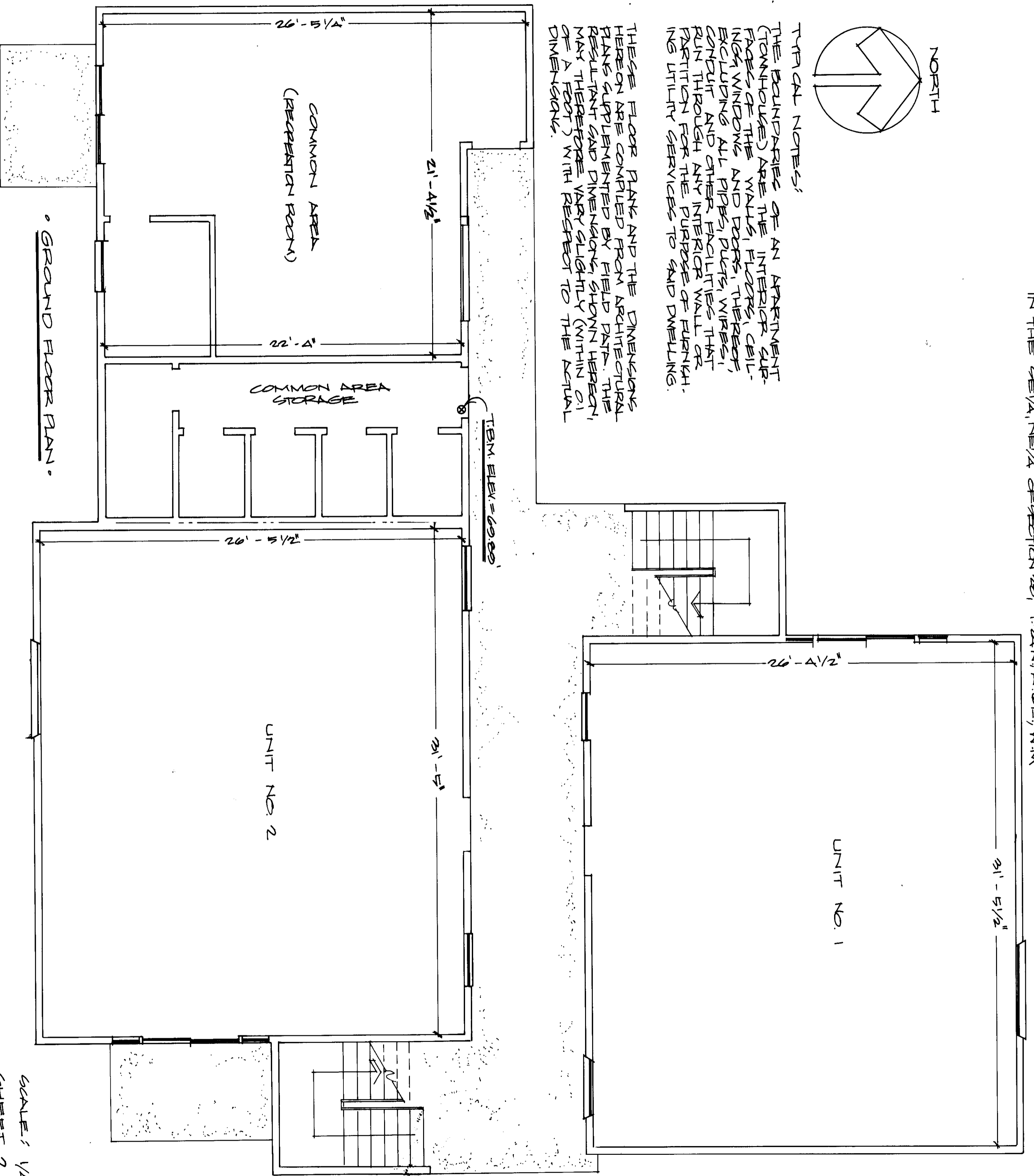
# THE JUNIPER, A CONDOMINIUM, AMENDED

IN THE SE 1/4, NE 1/4 OF SECTION 29, T.24N., R. 6E., W. 11W.



TYPICAL NOTES:

1. THE BOUNDARIES OF AN APARTMENT (TOWNSHED) ARE THE INTERIOR SURFACES OF THE WALLS, FLOORS, CEILING, WINDOWS AND DOORS, THEREOF, EXCLUDING ALL PIPES, DUCTS, WIRES, CONDUIT AND OTHER FACILITIES THAT RUN THROUGH ANY INTERIOR WALL OR PARTITION FOR THE PURPOSE OF FURNISHING UTILITY SERVICES TO SAID DWELLING.
2. THESE FLOOR PLANS AND THE DIMENSIONS HEREON ARE COMPILED FROM ARCHITECTURAL PLANS SUPPLEMENTED BY FIELD DATA. THE RESULTANT SAID DIMENSIONS, SHOWN HEREON, MAY THEREFORE VARY SLIGHTLY (WITHIN 0.1 OF A FOOT) WITH RESPECT TO THE ACTUAL DIMENSIONS.



ESTADOR CONSULTANTS T7181 11-9-77

SCALE: 1/4" = 1'-0"  
SHEET 2 OF 2

14-75