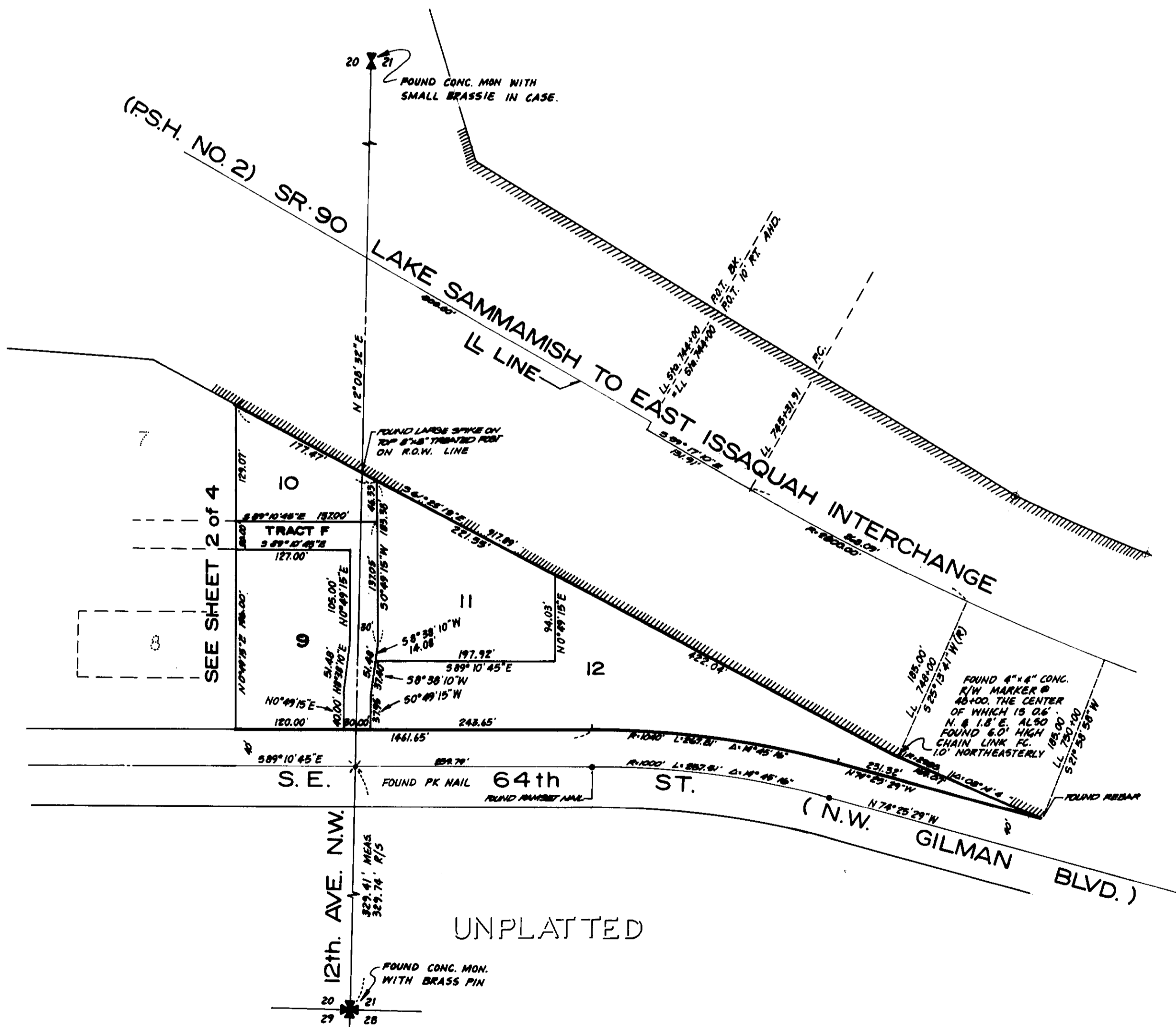
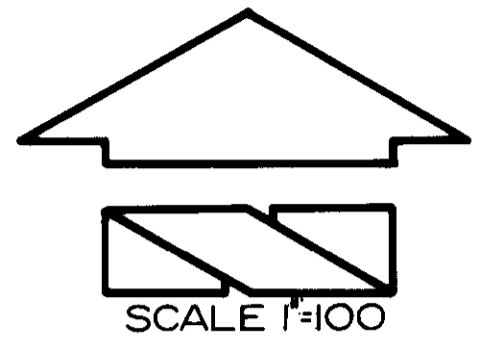


THE MEADOWS OF ISSAQUAH

124/79

A PORTION OF THE S.E. 1/4 SEC. 20, T. 24 N., R. 6 E., W.M. AND
 A PORTION OF THE S.W. 1/4 SEC. 21, T. 24 N., R. 6 E., W.M.
 ISSAQUAH, WASHINGTON



124/79

SHEET 3 of 4

5137003