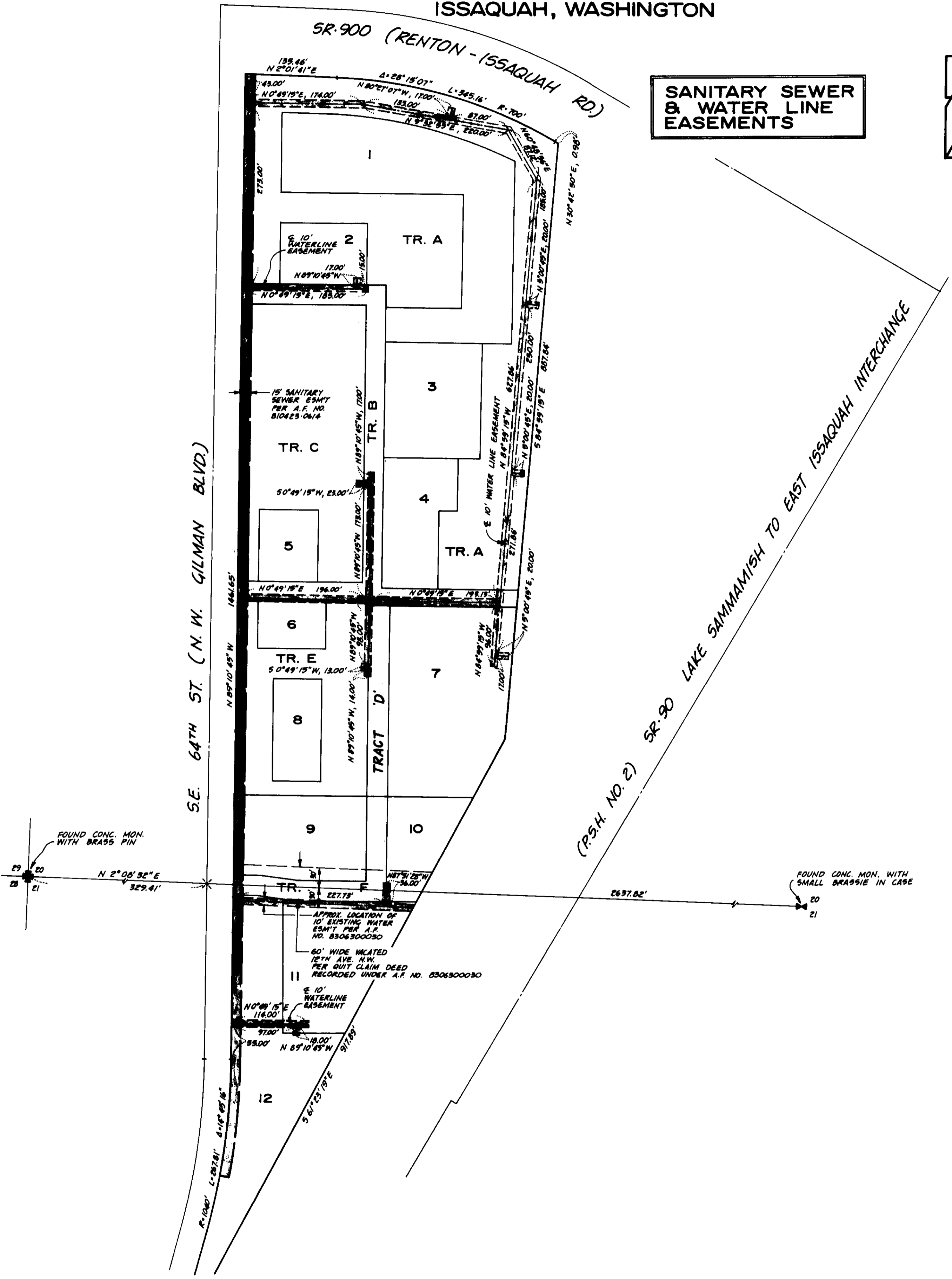
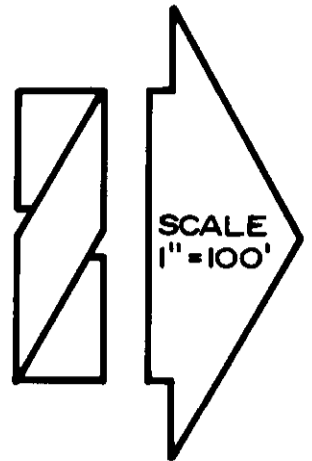


# THE MEADOWS OF ISSAQUAH

A PORTION OF THE S.E. 1/4 SEC. 20, T. 24 N., R. 6 E., W.M. AND  
A PORTION OF THE SW. 1/4 SEC. 21, T. 24 N., R. 6 E., W.M.

ISSAQUAH, WASHINGTON

SANITARY SEWER  
& WATER LINE  
EASEMENTS



(P.S.H. NO. 2) SR 90 LAKE SAMMAMISH TO EAST ISSAQUAH INTERCHANGE

SE. 64TH ST. (N.W. GILMAN BLVD.)

SR 900 (RENTON - ISSAQUAH RD.)

FOUND CONC. MON. WITH BRASS PIN  
N 2° 05' 30" E  
329.41'

FOUND CONC. MON. WITH SMALL BRASSIE IN CASE  
2697.82'

APPROX. LOCATION OF 10' EXISTING WATER ESM'T PER A.F. NO. 8306300030  
60' WIDE VACATED 12TH AVE. N.W. PER QUIT CLAIM DEED RECORDED UNDER A.F. NO. 8306300030

10' WATERLINE EASEMENT  
N 0° 09' 15" E  
114.00'