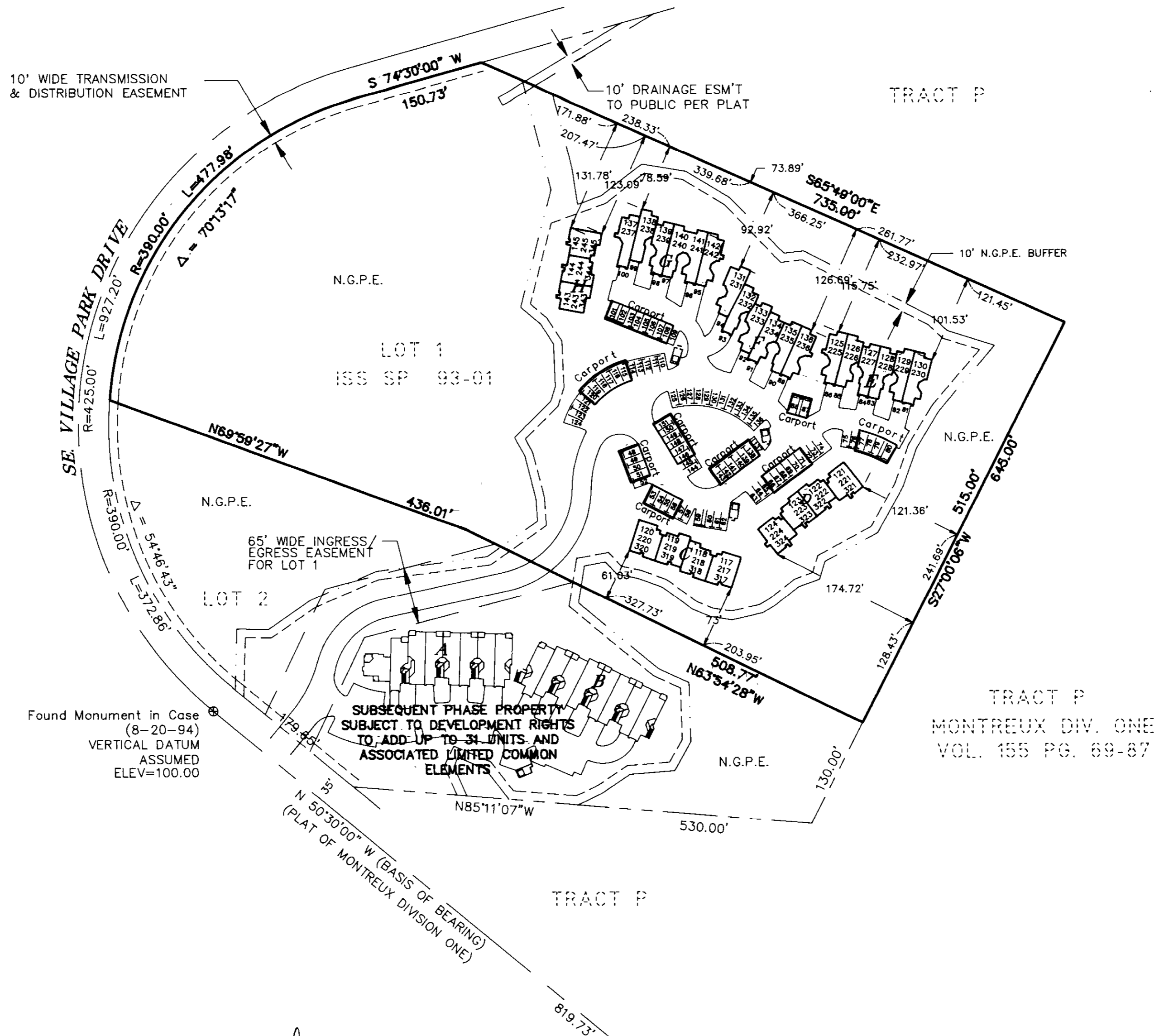


# THE VILLAGE AT MONTREUX A CONDOMINIUM - PHASE I

SITUATE IN THE NW 1/4 OF SEC. 19, TWP. 24 N., R. 6 E., W.M.,  
CITY OF ISSAQUAH, KING COUNTY, WASHINGTON



Found Monument in Case  
(8-20-94)  
VERTICAL DATUM  
ASSUMED  
ELEV=100.00

SUBSEQUENT PHASE PROPERTY  
SUBJECT TO DEVELOPMENT RIGHTS  
TO ADD UP TO 31 UNITS AND  
ASSOCIATED LIMITED COMMON  
ELEMENTS

TRACT P  
MONTREUX DIV. ONE  
VOL. 155 PG. 69-87



CONCEPT ENGINEERING, INC.  
455 Rainier Boulevard North, Suite 200  
Issaquah, Washington 98027  
(206) 392-8055

