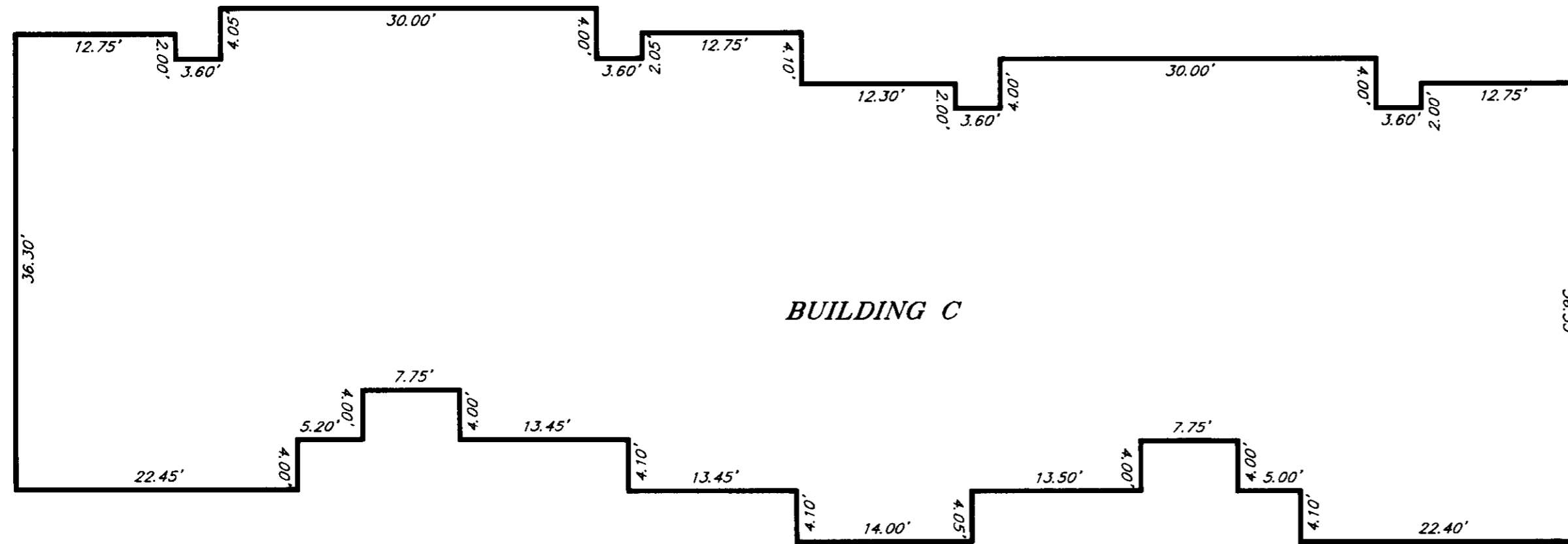
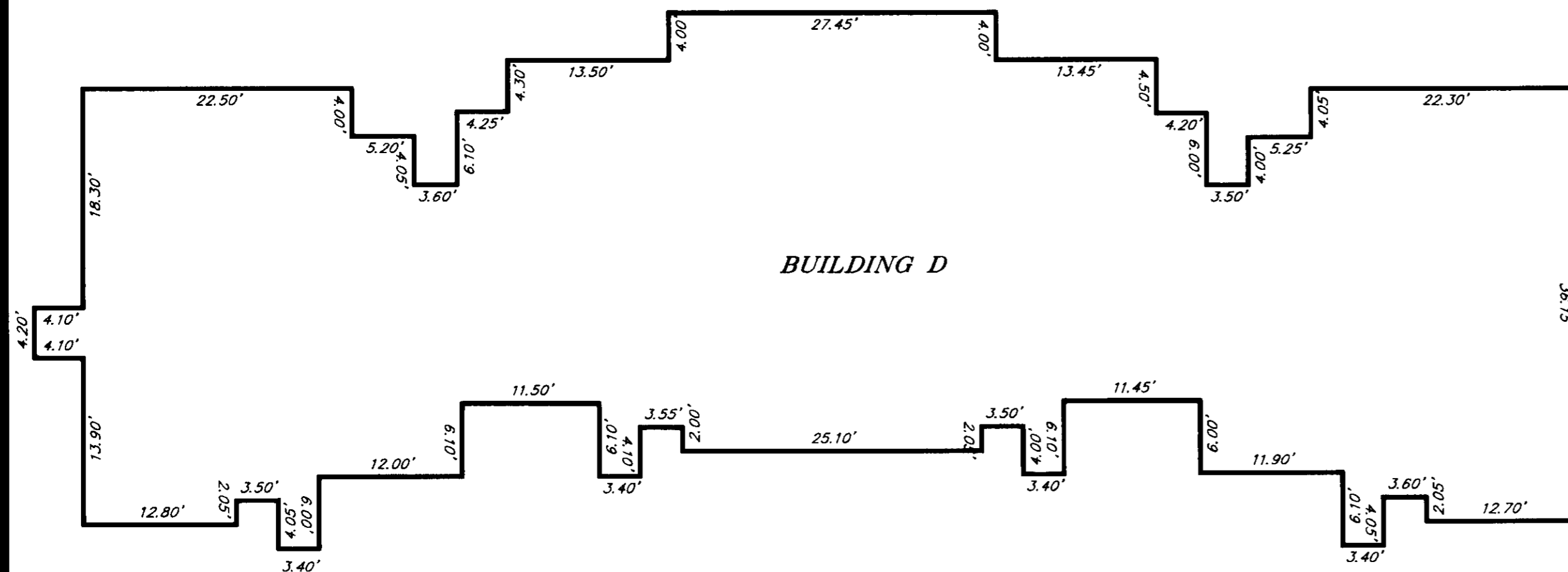


# THE VILLAGE AT MONTREUX A CONDOMINIUM - PHASE I

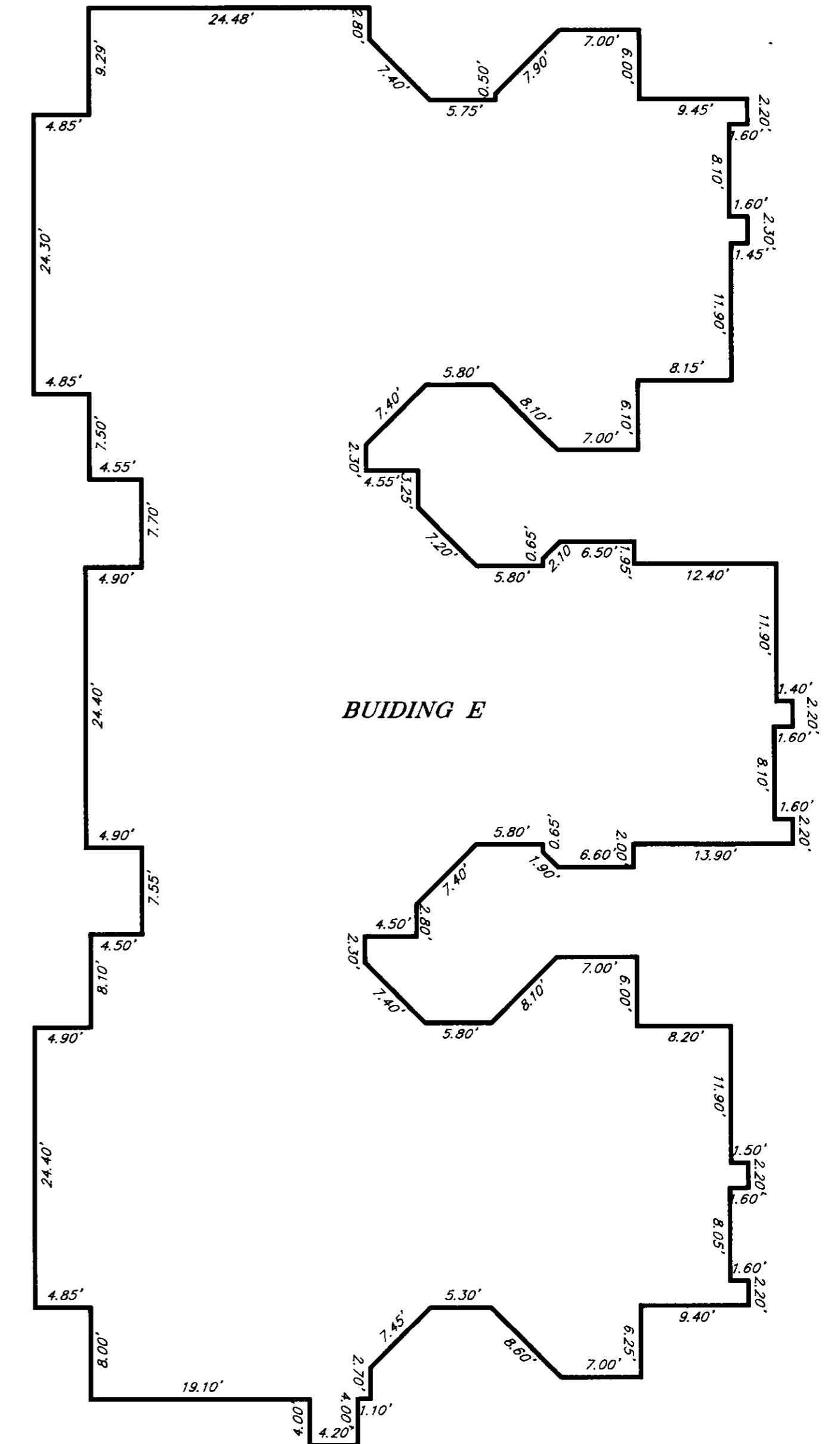
SITUATE IN THE NW 1/4 OF SEC. 19, TWP. 24 N., R. 6 E., W.M.,  
CITY OF ISSAQUAH, KING COUNTY, WASHINGTON



BUILDING C



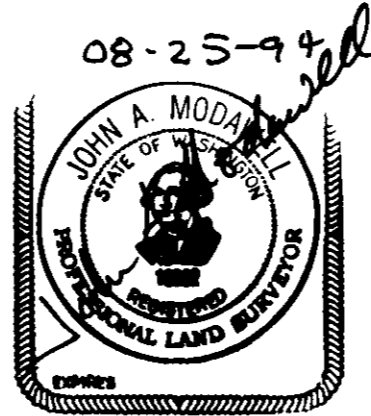
BUILDING D



BUIDING E



CONCEPT ENGINEERING, INC.  
 455 Rainier Boulevard North, Suite 200  
 Issaquah, Washington 98027  
 (206) 392-8055



EXTERIOR BUILDING DIMENSIONS

SCALE: 1" = 10'

PAGE 5 OF 6