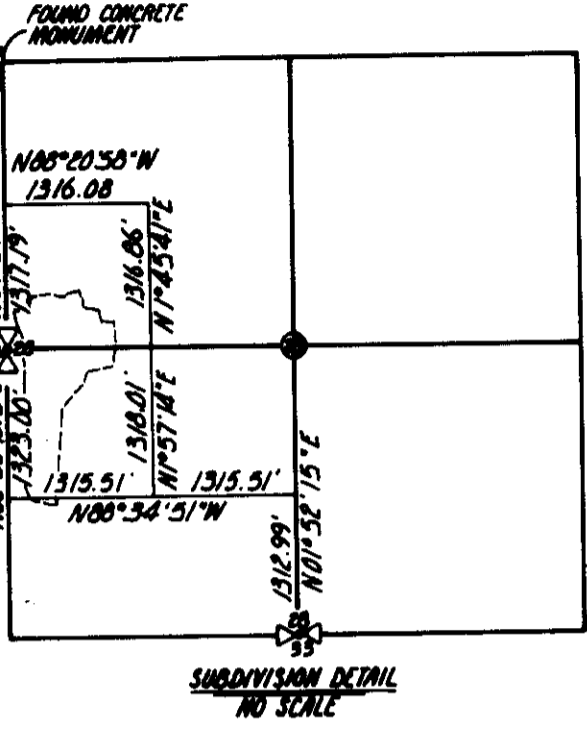
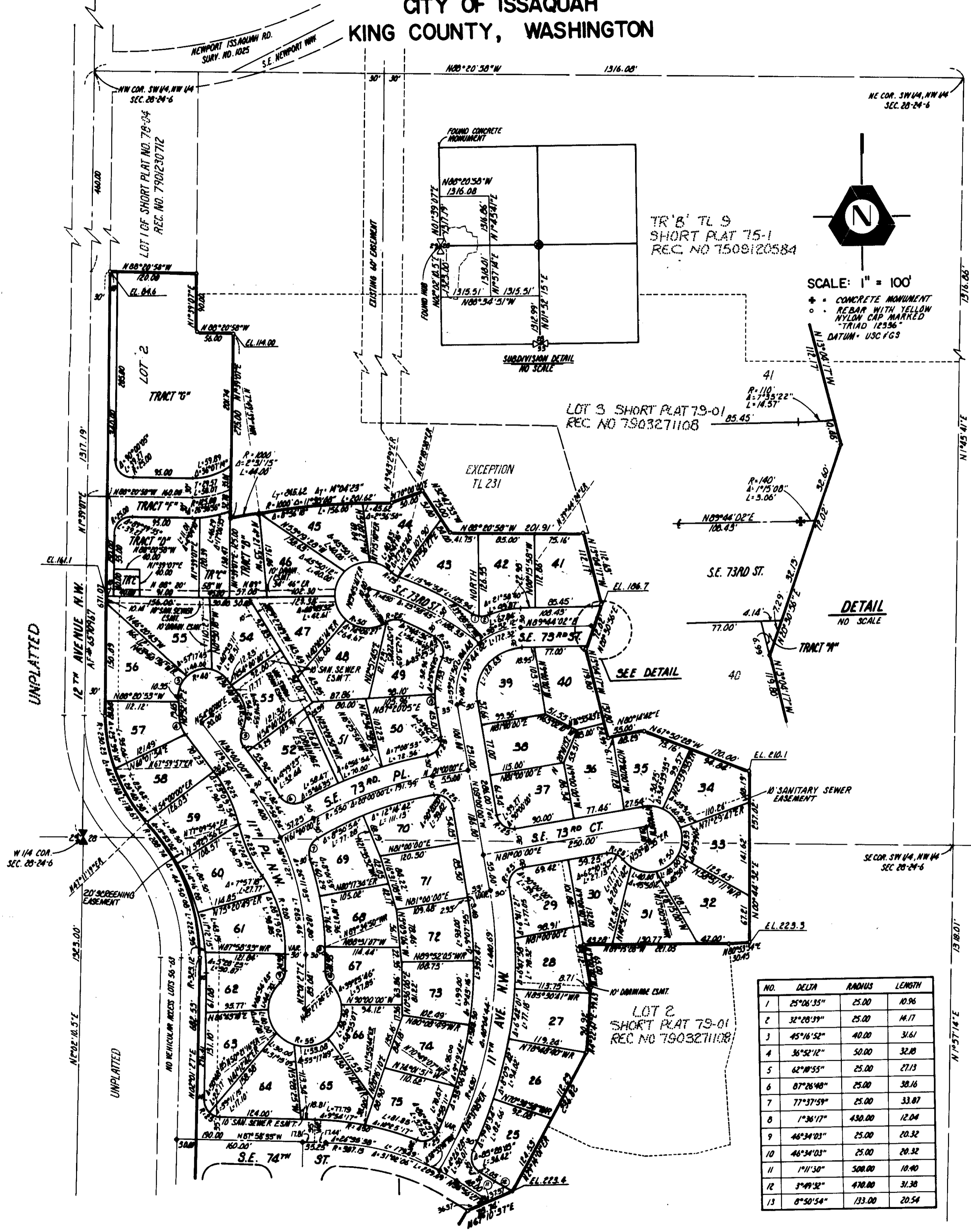


THE WOODS AT ISSAQUAH

110-32

DIVISION NO. 1
SECTION 28, TWP. 24N., R. 6E., W.M.
CITY OF ISSAQUAH
KING COUNTY, WASHINGTON

20 21
29 28

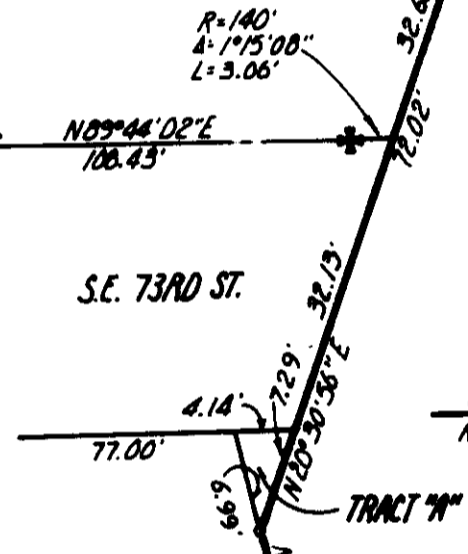


TR 8' TL 9
SHORT PLAT 75-1
REC. NO 7509120584

SCALE: 1" = 100'
* CONCRETE MONUMENT
o REBAR WITH YELLOW NYLON CAP MARKED
- TRIAD 12536
DATUM - USC FGS

LOT 3 SHORT PLAT 79-01
REC NO 7903271108

EXCEPTION
TL 231



NO.	DELTA	RADIUS	LENGTH
1	25°06'35"	25.00	10.96
2	32°28'39"	25.00	14.17
3	45°16'52"	40.00	31.61
4	36°52'12"	50.00	32.88
5	62°10'55"	25.00	27.13
6	87°26'48"	25.00	38.16
7	77°37'59"	25.00	33.87
8	1°36'17"	430.00	12.04
9	46°34'03"	25.00	20.32
10	46°34'03"	25.00	20.32
11	1°11'50"	508.00	10.40
12	3°49'32"	470.00	31.38
13	8°50'54"	133.00	20.54

SHEET 2 OF 3 SHEETS