

# THE WOODS AT ISSAQUAH

110-33

DIVISION NO. 1  
SECTION 28, TWP. 24N., R.6E., W.M.  
CITY OF ISSAQUAH  
KING COUNTY, WASHINGTON

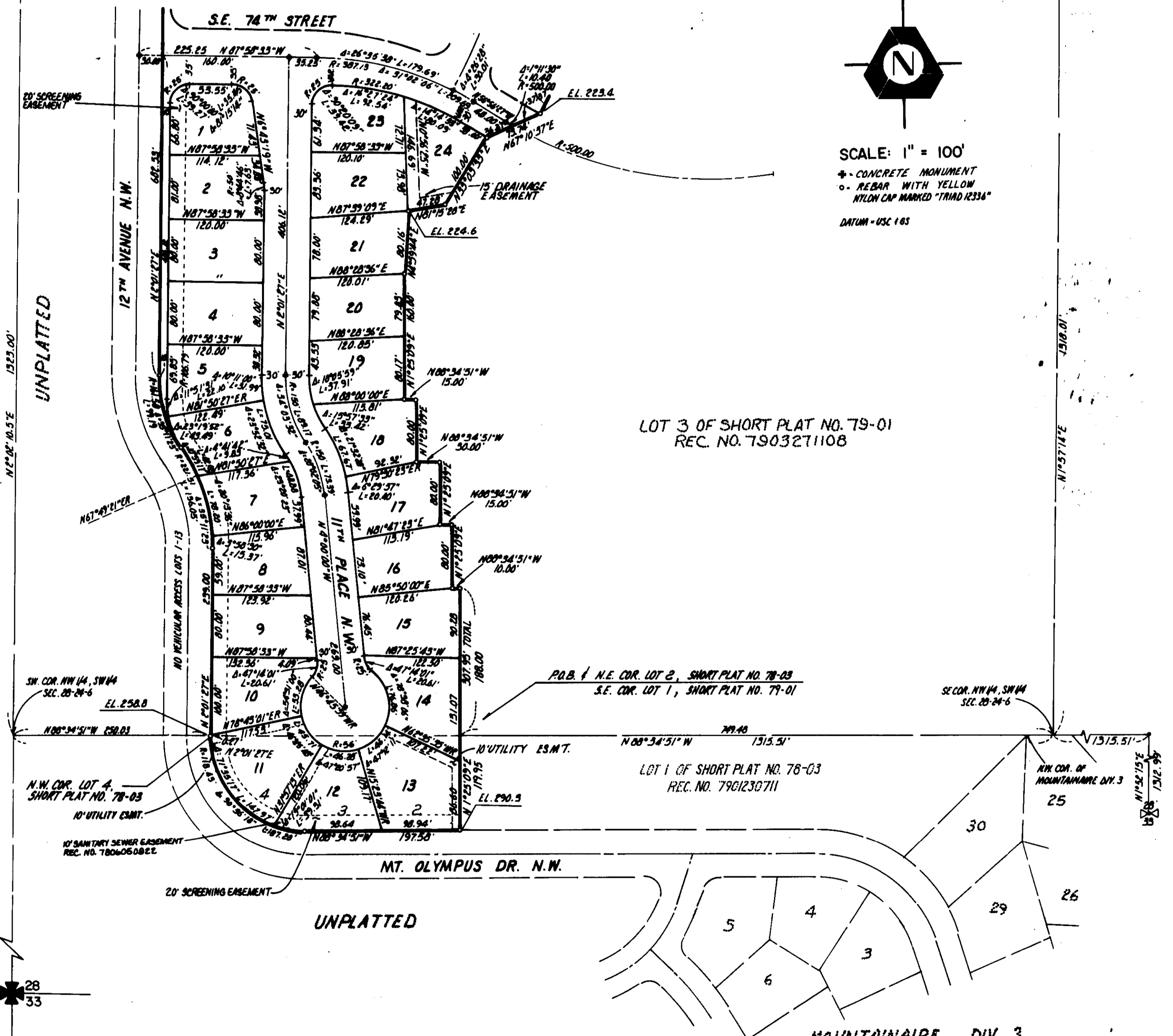
29 28  
W 1/4 COR.  
SEC. 28-24-6

SE COR. SW 1/4, NW 1/4  
SEC. 28-24-6

**TRACT DESIGNATION LEGEND**

TRACT "A", "B", "C", "D" TO REMAIN IN PRIVATE OWNERSHIP AND RESERVED FOR THE FUTURE WOODS AT ISSAQUAH DIV. NO. 3.  
TRACT "E" HEREBY DEDICATED TO THE CITY OF ISSAQUAH FOR A WATER PUMP SITION SITE.  
TRACT "F" TO REMAIN IN PRIVATE OWNERSHIP AND RESERVED FOR FUTURE ROADWAY PURPOSES FOR THE WOODS AT ISSAQUAH DIV. NO. 3.  
AN EASEMENT IS HEREBY DEDICATED TO THE CITY OF ISSAQUAH, ACROSS TRACT "F" FOR INGRESS, EGRESS, SLOPE, DRAINAGE AND UTILITY PURPOSES TO SERVE TRACT "A".  
TRACT "G" HEREBY DEDICATED TO THE CITY OF ISSAQUAH FOR STORM DRAINAGE DETENTION PURPOSES.

LOT 3 SHORT PLAT NO. 79-01  
REC. NO. 7903271108



SCALE: 1" = 100'  
\* CONCRETE MONUMENT  
o REBAR WITH YELLOW NYLON CAP MARKED "TRIAD 12334"  
DATUM - USC 165

LOT 3 OF SHORT PLAT NO. 79-01  
REC. NO. 7903271108

P.B. & N.E. COR. LOT 2, SHORT PLAT NO. 78-03  
S.E. COR. LOT 1, SHORT PLAT NO. 79-01

LOT 1 OF SHORT PLAT NO. 78-03  
REC. NO. 7901230711

MOUNTAINEIRE DIV. 3  
VOL. 9, PGS. 53 & 54