

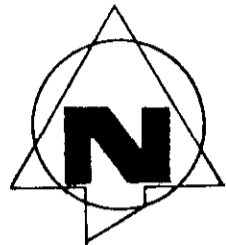
# THE WOODS AT ISSAQUAH DIVISION 3A

SECTION 28, TWP. 24N., RGE. 6E. W.M.

CITY OF ISSAQUAH  
KING COUNTY WASHINGTON

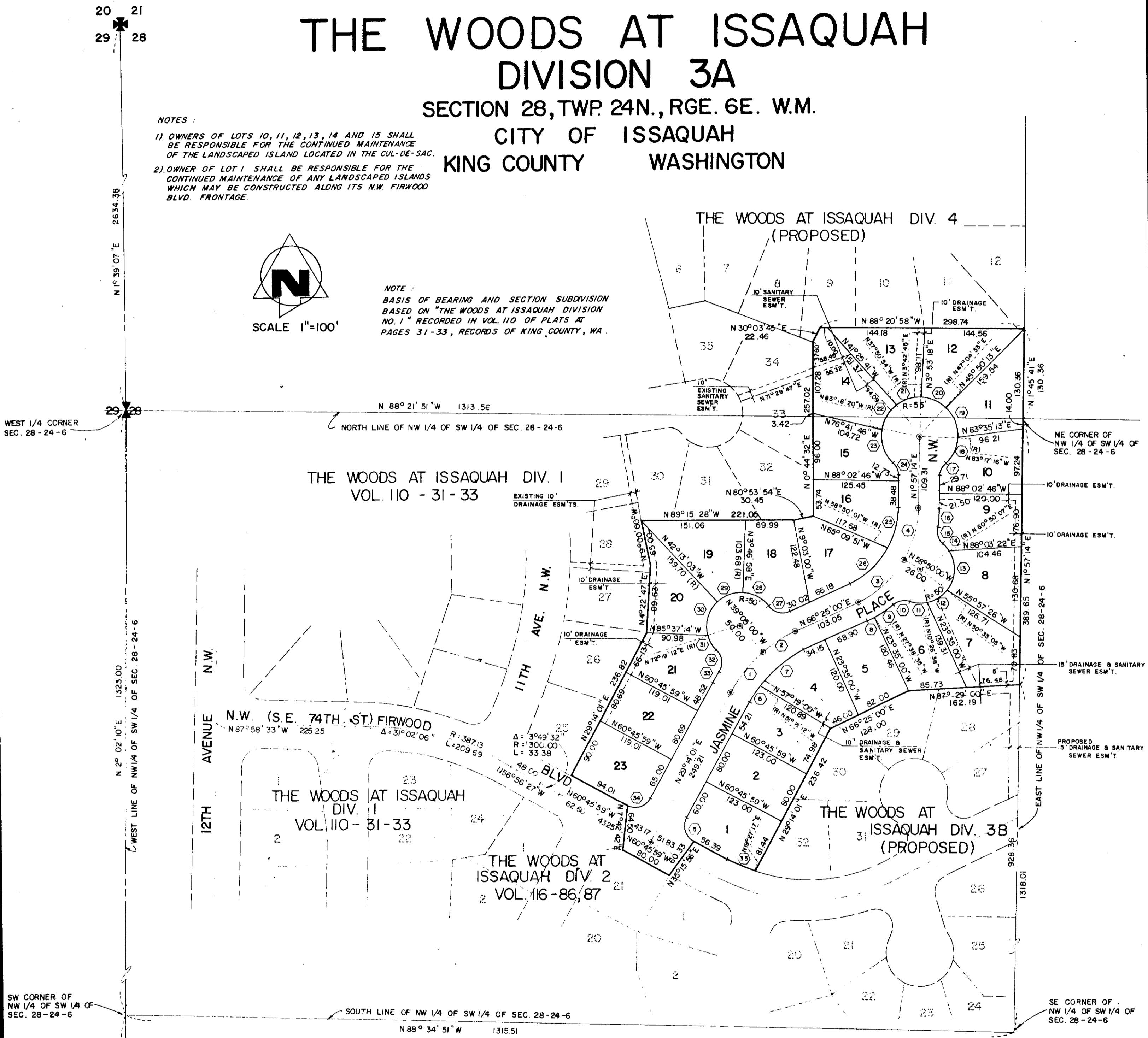
**NOTES:**

- OWNERS OF LOTS 10, 11, 12, 13, 14 AND 15 SHALL BE RESPONSIBLE FOR THE CONTINUED MAINTENANCE OF THE LANDSCAPED ISLAND LOCATED IN THE CUL-DE-SAC.
- OWNER OF LOT 1 SHALL BE RESPONSIBLE FOR THE CONTINUED MAINTENANCE OF ANY LANDSCAPED ISLANDS WHICH MAY BE CONSTRUCTED ALONG ITS NW FIRWOOD BLVD. FRONTAGE.



SCALE 1"=100'

**NOTE:**  
BASIS OF BEARING AND SECTION SUBVISION  
BASED ON "THE WOODS AT ISSAQUAH DIVISION  
NO. 1" RECORDED IN VOL. 110 OF PLATS AT  
PAGES 31-33, RECORDS OF KING COUNTY, WA.



O	Δ	R	L	T
1	21° 40' 59"	200.00	75.69	38.30
2	15° 30' 00"	200.00	54.11	27.22
3	35° 15' 00"	155.00	95.36	49.24
4	29° 12' 46"	155.00	79.03	40.39
5	90° 00' 00"	25.00	39.27	25.00
6	09° 29' 47"	170.00	28.18	14.12
7	27° 41' 12"	170.00	82.15	41.89
8	04° 03' 35"	185.00	13.11	6.56
9	10° 45' 19"	185.00	34.73	17.42
10	57° 24' 56"	25.00	25.05	13.69
11	29° 27' 40"	50.00	25.71	13.15
12	40° 06' 26"	50.00	35.00	18.25
13	68° 36' 49"	50.00	59.88	34.12
14	17° 31' 09"	50.00	15.29	7.70
15	57° 24' 56"	25.00	25.05	13.69
16	08° 46' 41"	185.00	28.34	14.20
17	46° 34' 03"	25.00	20.32	10.76

O	Δ	R	L	T
18	41° 48' 33"	55.00	40.13	21.01
19	49° 38' 11"	55.00	47.65	25.44
20	43° 21' 48"	55.00	41.63	21.87
21	41° 33' 39"	55.00	39.90	20.87
22	45° 27' 26"	55.00	43.64	23.04
23	51° 18' 29"	55.00	49.25	26.42
24	46° 34' 03"	25.00	20.32	10.76
25	29° 12' 46"	125.00	63.73	32.58
26	35° 15' 01"	125.00	76.90	39.71
27	79° 10' 12"	25.00	34.54	20.67
28	51° 48' 14"	50.00	45.21	24.28
29	46° 00' 00"	50.00	40.14	21.22
30	65° 27' 46"	50.00	57.13	32.14
31	26° 08' 42"	50.00	22.82	11.61
32	77° 41' 51"	25.00	33.90	20.14
33	04° 38' 20"	230.00	18.62	9.32
34	90° 00' 00"	25.00	39.27	25.00
35	09° 46' 44"	245.00	41.82	20.96

**SURVEYOR'S CERTIFICATE**

I HEREBY CERTIFY THAT THIS PLAT OF THE WOODS AT ISSAQUAH DIVISION 3A IS BASED UPON AN ACTUAL SURVEY AND SUBDIVISION OF SECTION 28, TOWNSHIP 24 NORTH, RANGE 6 EAST OF W.M., THAT THE COURSES AND DISTANCES ARE SHOWN CORRECTLY THEREON; THAT THE MONUMENTS WILL BE SET AND THE LOT AND BLOCK CORNERS WILL BE STAKED CORRECTLY ON THE GROUND AS CONSTRUCTION IS COMPLETED AND THAT I HAVE FULLY COMPLIED WITH THE PROVISIONS OF THE PLATTING REGULATIONS.

*George W. Drysdale*  
GEORGE W. DRYSDALE  
P.L.S. NO. 6228



**BARGHAUSEN CONSULTING ENGINEERS, INC.**  
LAND PLANNING AND DESIGN SPECIALISTS  
6625 SO. 190TH STREET SUITE 102 KENT, WA. 98032 872-5522  
JOB NO. 1167