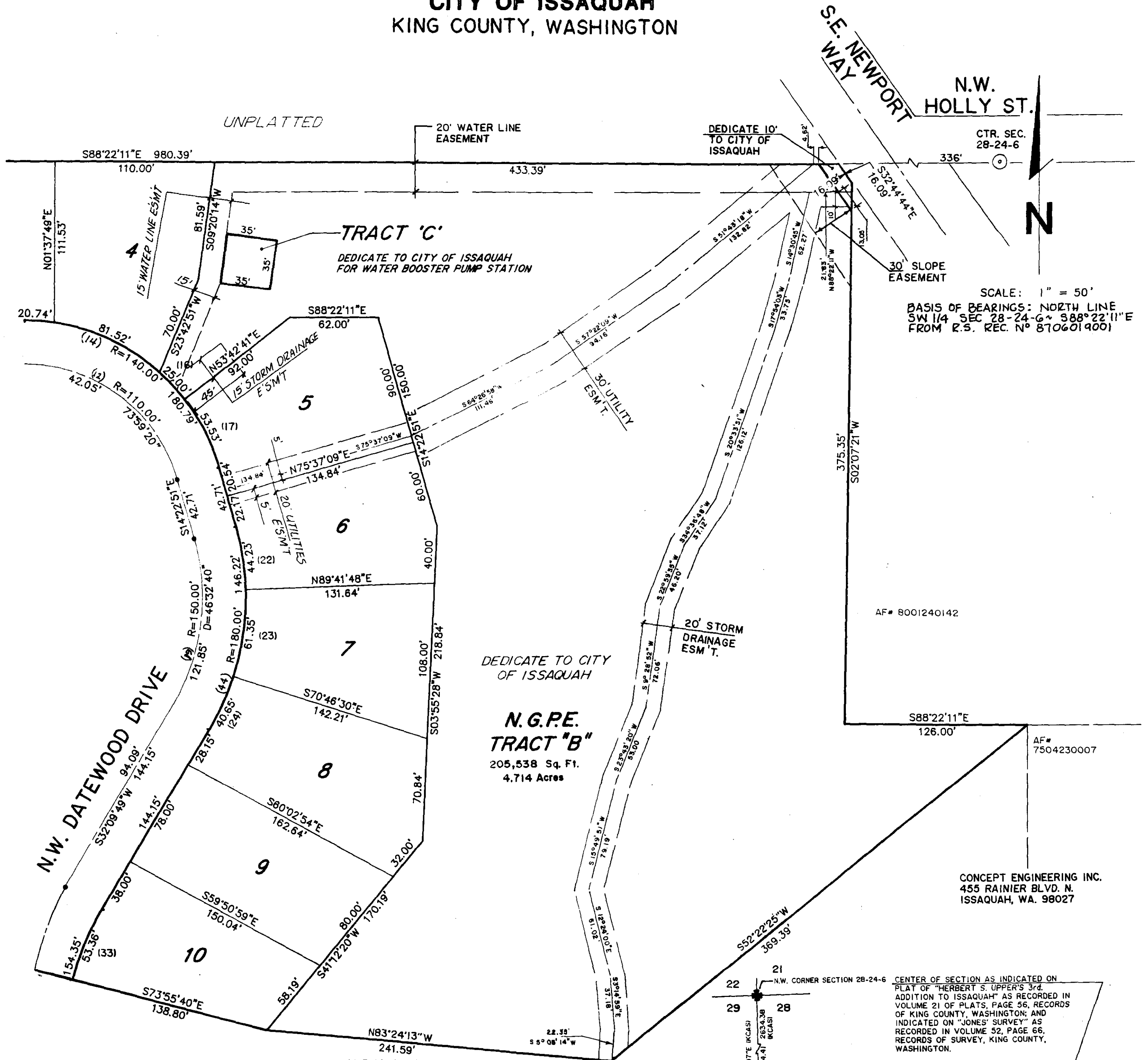


THE WOODS AT ISSAQUAH DIVISION V-A

N.E. 1/4, S.W. 1/4, SECTION 28, TOWNSHIP 24 NORTH, RANGE 6 E., W.M.

CITY OF ISSAQUAH
KING COUNTY, WASHINGTON

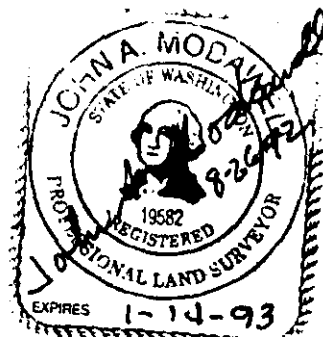
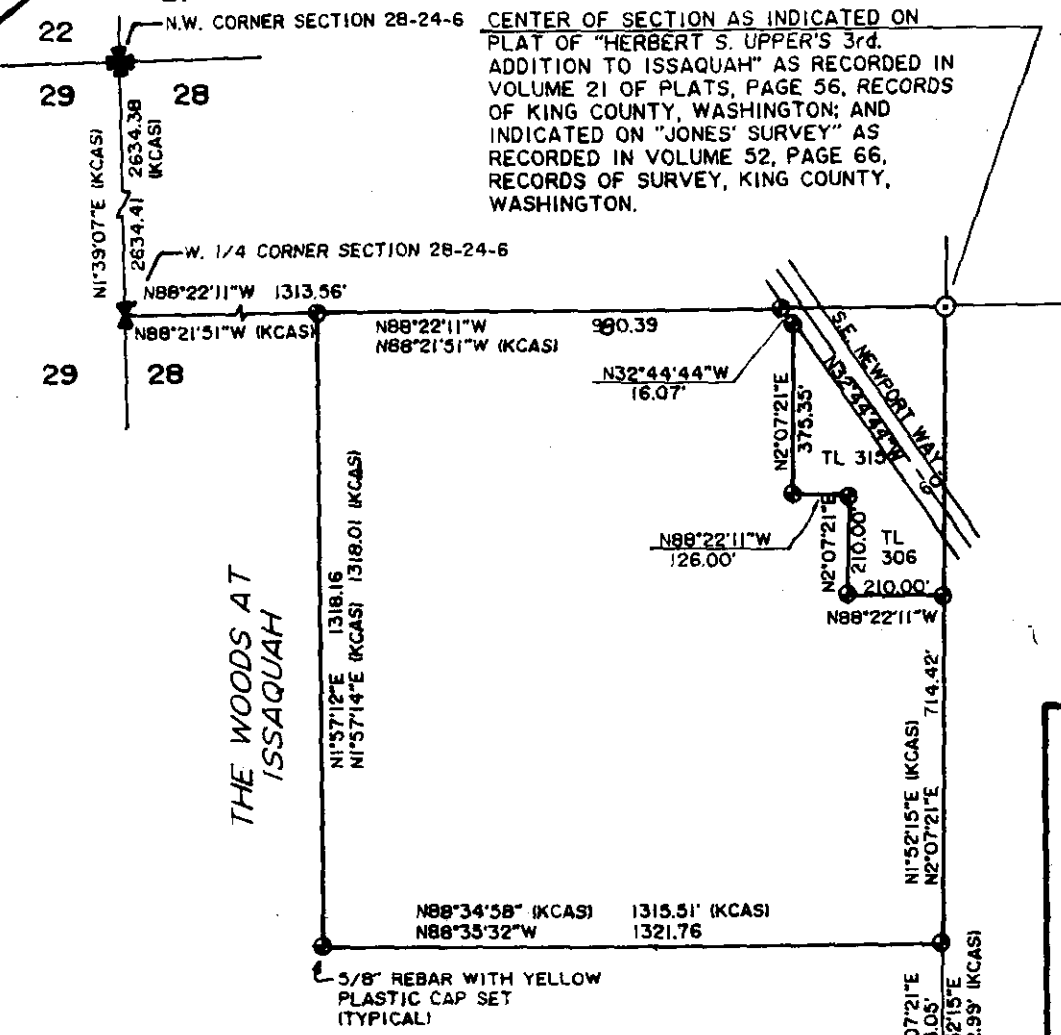


SCALE: 1" = 50'
BASIS OF BEARINGS: NORTH LINE
SW 1/4 SEC 28-24-6 + S88°22'11"E
FROM R.S. REC. N° 8706019001

SURVEYING PERFORMED IN CONJUNCTION WITH THIS PLAT UTILIZED THE FOLLOWING EQUIPMENT AND PROCEDURES:

1. SUBDIVISION AND CONTROL TRAVERSES:
10" TOPCON GTS 3-C TOTAL STATION
2. INTERIOR LOT SURVEYS:
SAME AS ABOVE

INSTRUMENTS ARE MAINTAINED TO MANUFACTURERS SPECIFICATION AS REQUIRED BY WAC-332-130-100.



CONCEPT ENGINEERING INC.
455 RAINIER BLVD. N.
ISSAQUAH, WA. 98027