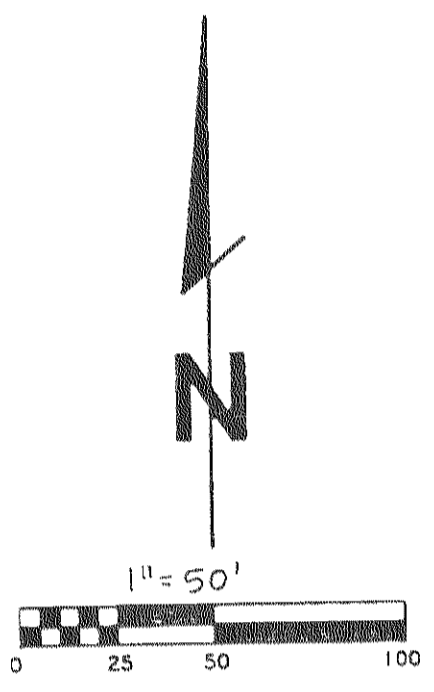
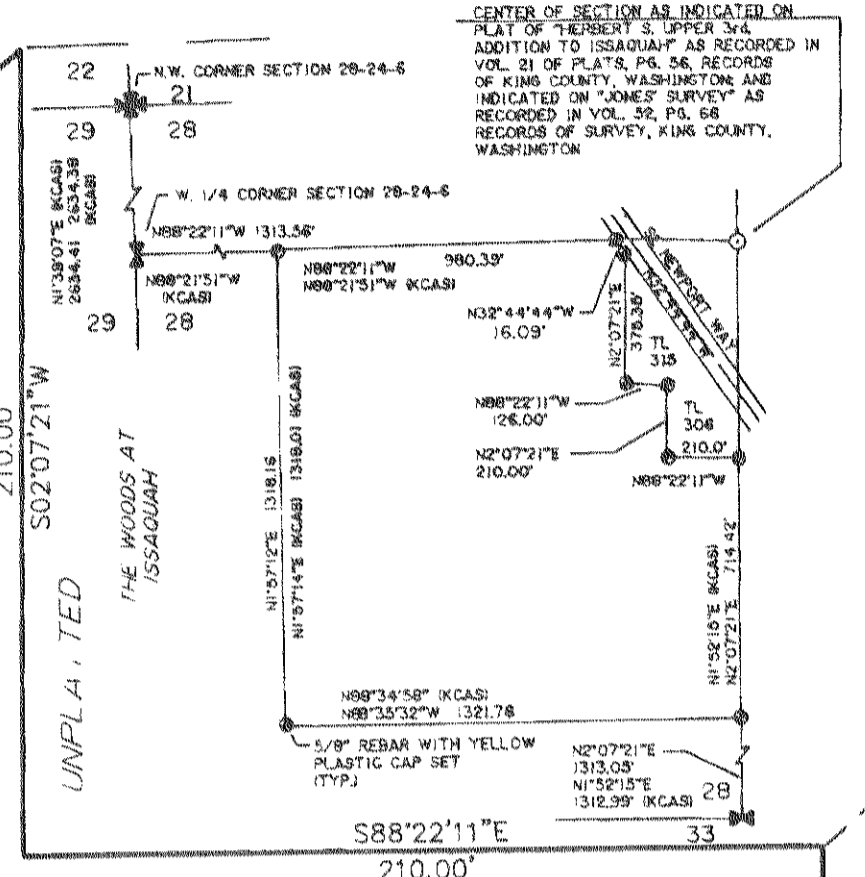


THE WOODS AT ISSAQUAH DIV. V-B

N.E.¼, S.W.¼, SECTION 28, TOWNSHIP 24 NORTH, RANGE 6 EAST, W.M.
CITY OF ISSAQUAH
KING COUNTY, WASHINGTON

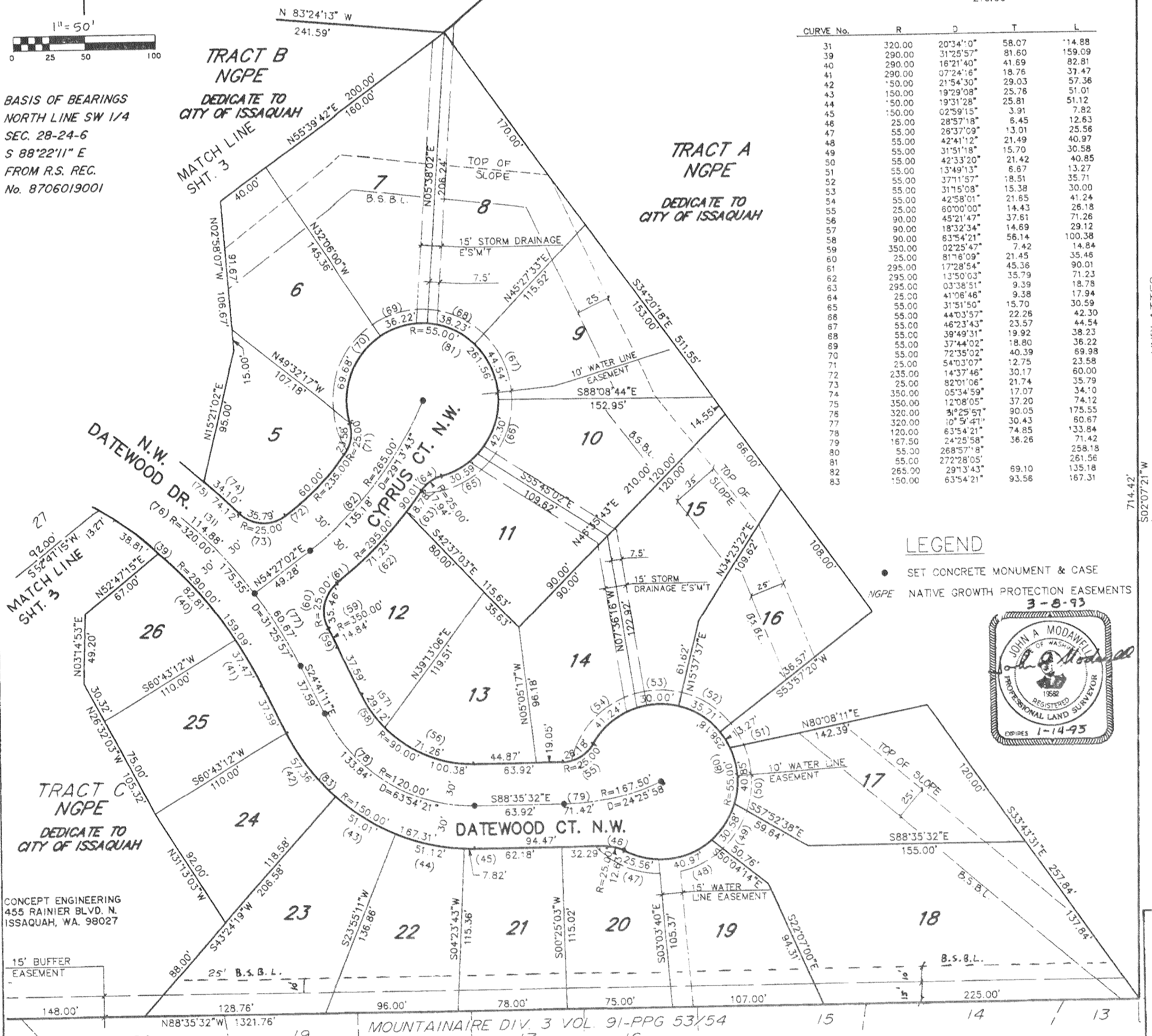
TRACT 'B'
THE WOODS AT ISSAQUAH DIV. V-A
TRACT
VOL. 162 PPS. 72-75

NOTE: THIS PLAT WAS DESIGNED FROM A BOUNDARY SURVEY FOR DR. IVOR I. MORGAN, BY ARNETT AND ASSOCIATES, RECORDED IN BOOK 55 OF SURVEYS AT PAGE 14.4 RECORDING NO. 8706019001, KING COUNTY WASHINGTON RECORDS.

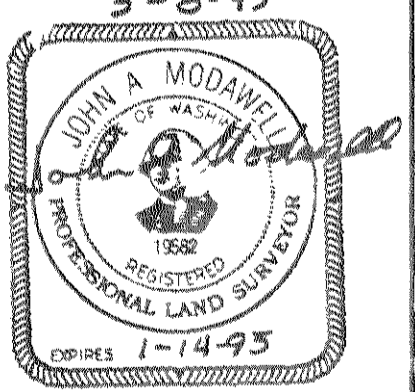


BASIS OF BEARINGS
NORTH LINE SW 1/4
SEC. 28-24-6
S 88°22'11" E
FROM R.S. REC.
No. 8706019001

CURVE No.	R	D	T	L
31	320.00	20°34'10"	58.07	114.88
39	290.00	31°25'57"	81.60	159.09
40	290.00	16°21'40"	41.69	82.81
41	290.00	07°24'16"	18.76	37.47
42	150.00	21°54'30"	29.03	57.36
43	150.00	19°29'08"	25.76	51.01
44	150.00	19°31'28"	25.81	51.12
45	150.00	02°59'15"	3.91	7.82
46	25.00	28°57'18"	6.45	12.63
47	55.00	26°37'09"	13.01	25.56
48	55.00	42°41'12"	21.49	40.97
49	55.00	31°51'18"	15.70	30.58
50	55.00	42°33'20"	21.42	40.85
51	55.00	13°49'13"	6.87	13.27
52	55.00	37°11'57"	18.51	35.71
53	55.00	31°15'08"	15.38	30.00
54	55.00	42°58'01"	21.65	41.24
55	25.00	60°00'00"	14.43	28.18
56	90.00	45°21'47"	37.61	71.26
57	90.00	18°32'34"	14.69	29.12
58	90.00	63°54'21"	56.14	100.38
59	350.00	02°25'47"	7.42	14.84
60	25.00	81°16'09"	21.45	35.46
61	295.00	17°28'54"	45.36	90.01
62	295.00	13°50'03"	35.79	71.23
63	295.00	03°38'51"	9.39	18.78
64	25.00	41°06'46"	9.38	17.94
65	55.00	31°51'50"	15.70	30.59
66	55.00	44°03'57"	22.26	42.30
67	55.00	46°23'43"	23.57	44.54
68	55.00	39°49'31"	19.92	38.23
69	55.00	37°44'02"	18.80	36.22
70	55.00	72°35'02"	40.39	69.98
71	25.00	54°03'07"	12.75	23.58
72	235.00	14°37'46"	30.17	60.00
73	25.00	82°01'06"	21.74	35.79
74	350.00	05°34'59"	17.07	34.10
75	350.00	12°08'05"	37.20	74.12
76	320.00	31°25'57"	90.05	175.55
77	320.00	10°51'41"	30.43	60.67
78	120.00	63°54'21"	74.85	133.84
79	167.50	24°25'58"	36.26	71.42
80	55.00	268°57'18"		258.18
81	55.00	272°28'05"		261.56
82	265.00	291°3'43"	69.10	135.18
83	150.00	63°54'21"	93.56	167.31



LEGEND
 ● SET CONCRETE MONUMENT & CASE
 NGPE NATIVE GROWTH PROTECTION EASEMENTS



CONCEPT ENGINEERING
455 RAINIER BLVD. N.
ISSAQUAH, WA. 98027

15' BUFFER EASEMENT

UNPLATTED

UNPLATTED

PG. VOL