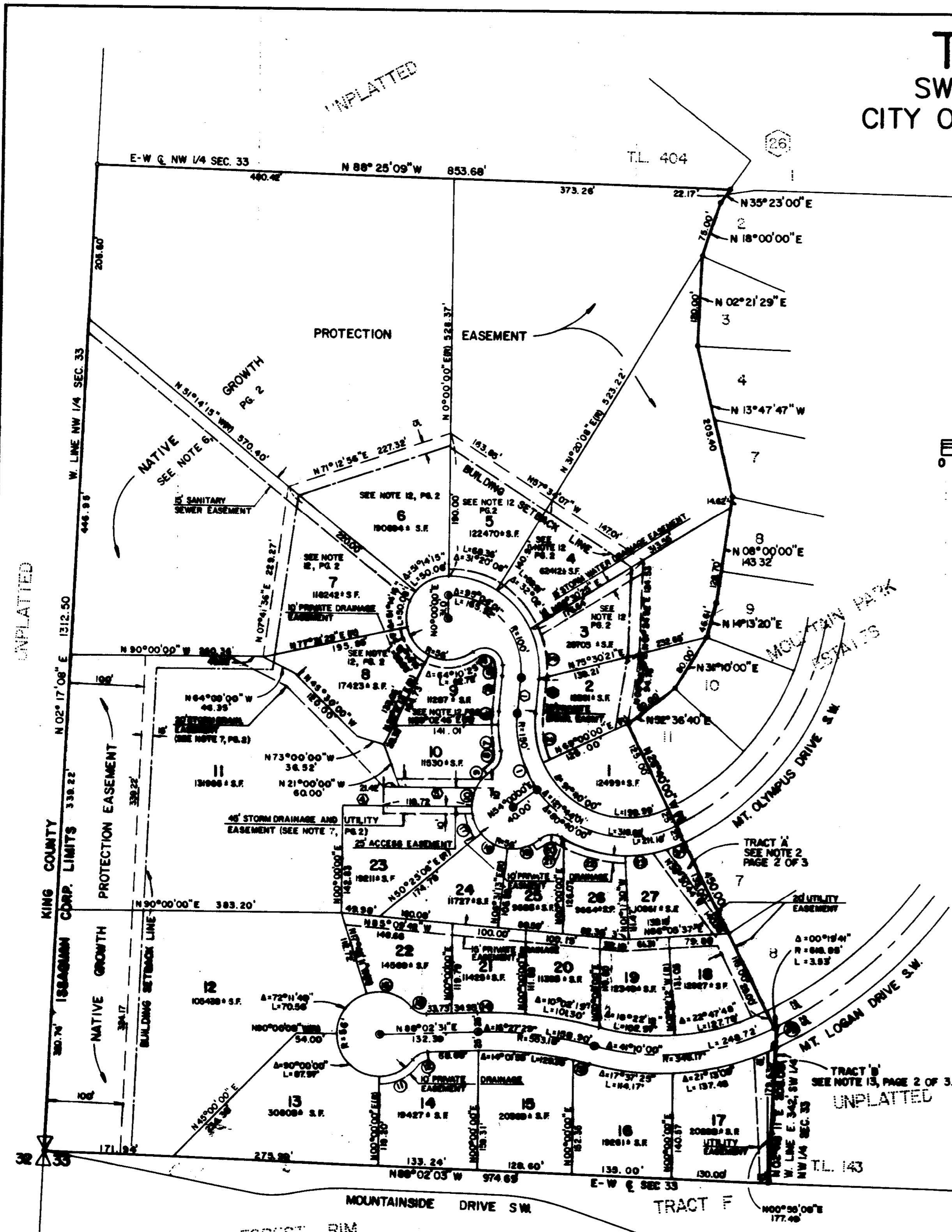


# TWENTY SIX POINT FIVE

SW 1/4, NW 1/4 SEC. 33, T.24N.,R.6E.,W.M.  
CITY OF ISSAQUAH, KING COUNTY, WASHINGTON

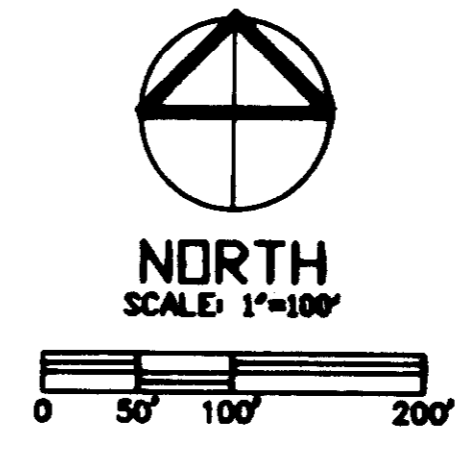
156-15  
CORRO



BASIS OF BEARINGS BETWEEN OTHER MONUMENTS FOUND IN PLACE WITHIN THE PLAT OF MOUNTAIN PARK ESTATES AS RECORDED IN VOL. 89 OF PLATS, PAGES 57-59 MERIDIAN = K.C.A. 9.

### LEGEND

- SET CONC. MON. - 4" x 4" W/2" DIAM. DR. IN CASE
- SET 1/2" I.P. W/CAP - DBA 1767E
- ALL LOT CORNERS ARE MARKED WITH A 1/2" x 3/4" IRON ROD W/CAP - DBA 1767E
- R RADIAL



### CURVE TABLE

Δ	R	L	CH	BRG
41° 04' 00"	790.00'	107.74'	202.05'	N 57° 47' 54" W
39° 04' 00"	729.00'	09.00'	04.00'	N 09° 37' 54" W
34° 41' 20"	729.00'	04.19'	00.20'	N 10° 46' 39" W
182° 09' 40"	25.00'	98.26'	49.74'	N 66° 51' 10" W
10° 44' 27"	79.00'	14.29'	14.29'	N 00° 22' 40" W
00° 01' 17"	179.00'	10.91'	10.90'	N 02° 09' 24" E
11° 41' 00"	179.00'	34.36'	34.31'	N 00° 34' 44" W
71° 04' 40"	29.00'	29.00'	29.04'	N 29° 22' 40" E
38° 26' 41"	70.00'	31.71'	31.29'	N 42° 44' 14" E
20° 30' 39"	70.00'	29.92'	29.00'	N 19° 19' 27" E
39° 30' 24"	76.00'	72.02'	30.71'	N 09° 04' 40" E
31° 52' 39"	29.00'	22.64'	21.87'	N 60° 06' 04" E
00° 20' 34"	720.10'	22.36'	22.36'	N 76° 42' 01" E
00° 27' 10"	29.00'	04.70'	04.70'	N 80° 44' 54" W
31° 38' 59"	29.00'	22.04'	21.87'	N 60° 01' 01" W
01° 49' 37"	76.00'	60.20'	02.41'	N 79° 56' 29" W
31° 34' 34"	76.00'	30.04'	37.92'	N 19° 01' 27" W
49° 39' 39"	76.00'	42.40'	41.86'	N 61° 34' 50" W
47° 20' 47"	76.00'	46.41'	49.04'	N 72° 46' 47" E
71° 04' 40"	29.00'	31.09'	29.04'	N 84° 57' 20" E
01° 39' 32"	179.00'	4.00'	4.00'	N 60° 30' 20" N
20° 19' 39"	179.00'	00.99'	00.40'	N 79° 31' 16" W
17° 32' 07"	179.00'	39.36'	39.36'	N 01° 34' 44" E
01° 28' 40"	179.00'	20.99'	20.92'	N 60° 04' 20" E
00° 44' 30"	371.17'	4.02'	4.02'	N 00° 11' 07" E

### LINE TABLE

BRG.	DIST.
N 07° 30' 00" E	47.99'
N 07° 30' 00" E	47.99'
N 07° 30' 00" E	47.99'
N 10° 00' 00" E (1)	171.00'
N 10° 00' 00" W	109.14'

DAVID EVANS AND ASSOCIATES, INC.  
301-116TH AVENUE SE SUITE 170  
BELLEVUE, WASHINGTON 98004  
(206)455-3571

VOL 156  
PLAT