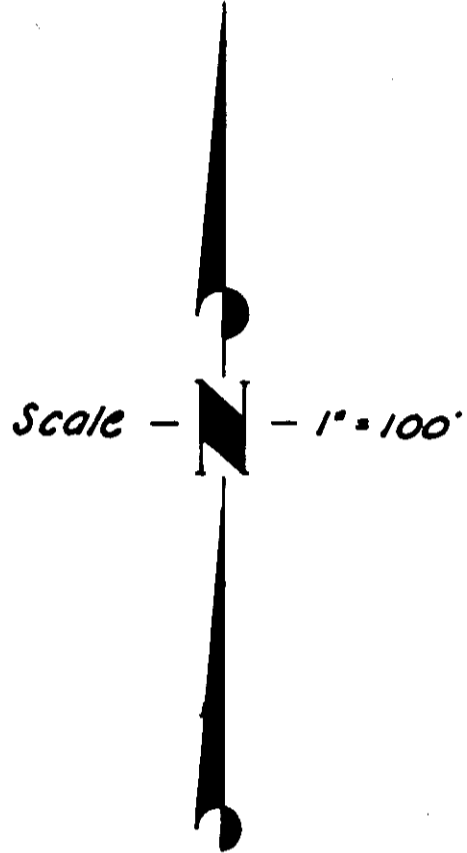
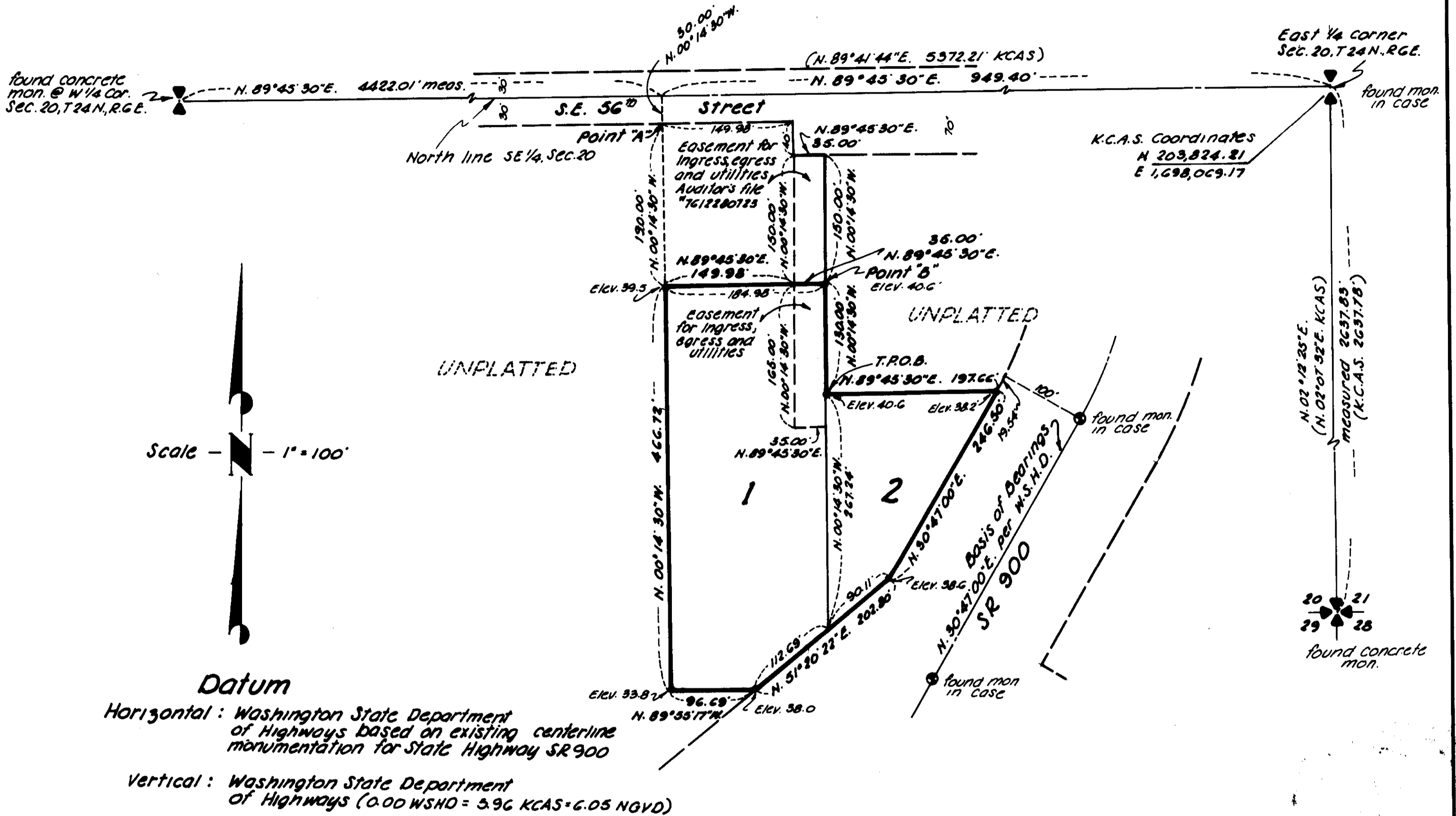


VIP'S TRACTS

SECTION 20, TWP. 24 N., RNGE. 6 E., W.M.

CITY OF ISSAQUAH KING CO., WASHINGTON

107-33



Datum

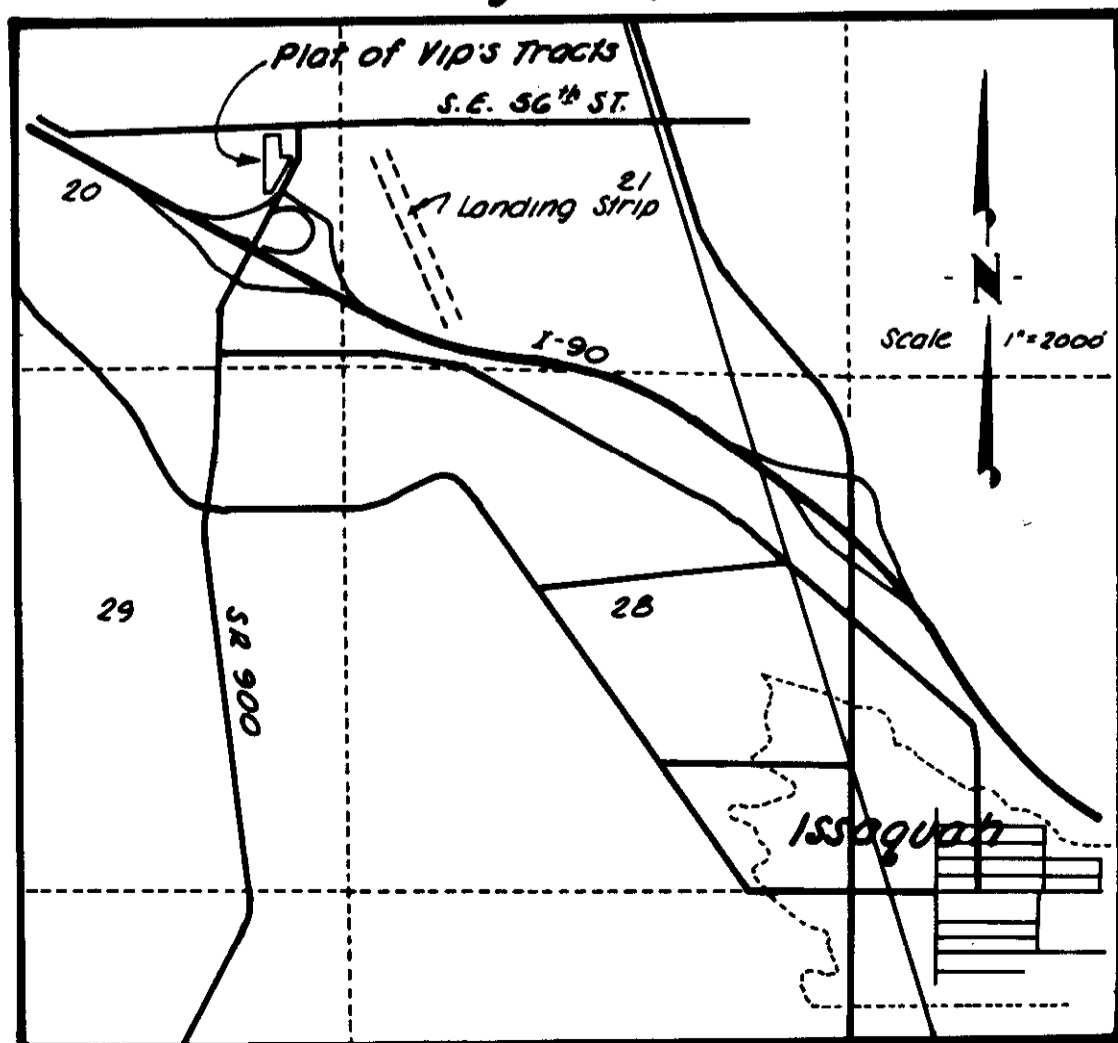
Horizontal : Washington State Department of Highways based on existing centerline monumentation for State Highway SR 900

Vertical : Washington State Department of Highways (0.00 WSHO = 3.96 KCAS = 6.05 NGVD)

Legend

- - Set rebar w/ I.D. cap
- ⊙ - concrete monument

Vicinity Map



Engineer
Harstad Associates Inc.
Seattle, Washington